



COWLEY ROAD, SW9

£475,000

High quality finish
Two double bedrooms
Private balcony
Ground floor
Excellent transport links
Chain free

@marshandparsons
marshandparsons.co.uk

MARSH &
PARSONS



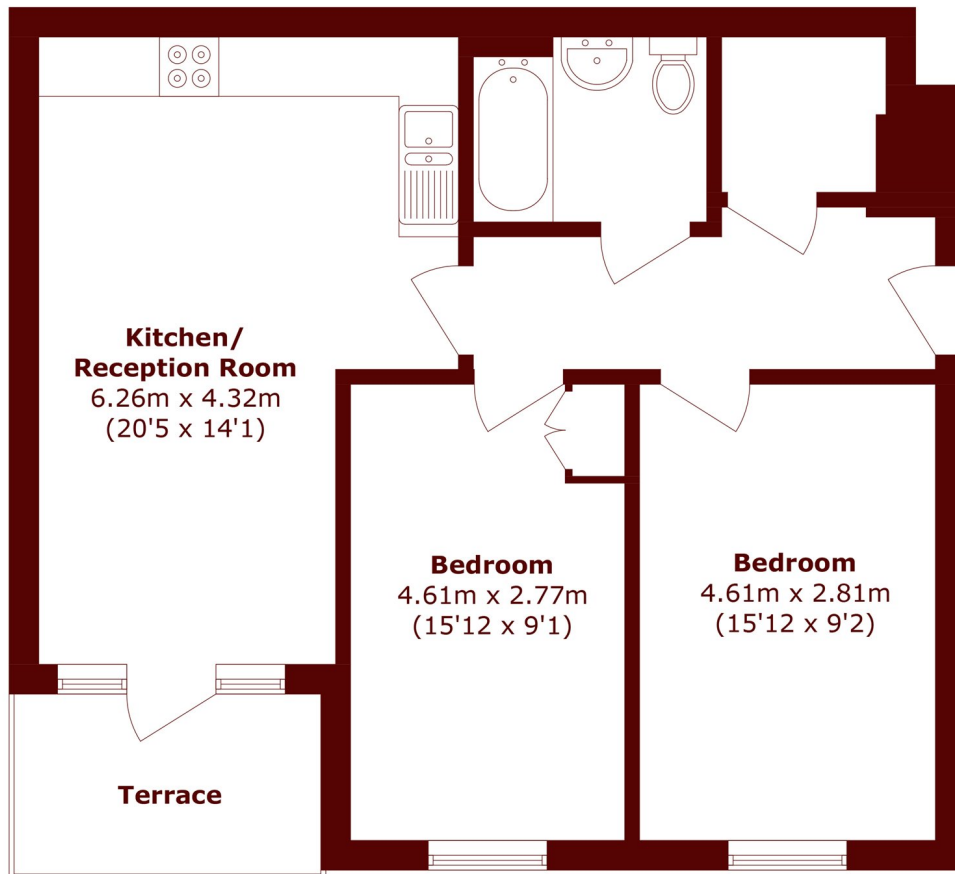
ABOUT THE PROPERTY

A beautifully presented, modern apartment with a large private balcony, set within the sought after Oval Quarter development. Flooded with natural light, this ground floor property offers well proportioned accommodation throughout. The apartment comprises two generous double bedrooms and an open plan kitchen and living area. The kitchen is stylishly finished with ample wall and base units and features modern integrated appliances.

Cowley Road is a vibrant and thriving location, surrounded by a wide selection of popular shops, cafés, bars and restaurants. The property is exceptionally well connected, with easy access to Brixton Station, Oval Station, Loughborough Junction and Stockwell Station.



STEP INSIDE COWLEY ROAD



Total area (approx.): 67.2 sq. m (723.3 sq. ft)
Terrace area (approx.): 5.9 sq. m (63.5 sq. ft)

Kennington
020 7587 1533

Energy Rating: B We aim to make our particulars both accurate and reliable. However, they are not guaranteed; nor do they form part of an offer or contract. If you require clarification on any points then please contact us, especially if you're traveling some distance to view. Please note that appliances and heating systems have not been tested and therefore no warranties can be given as to their good working order

**MARSH &
PARSONS**