

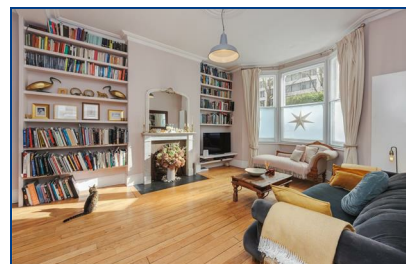


Mansfield Road, , London, NW3 2HP

£2,500,000

A beautifully presented Victorian house providing five/six bedrooms and wonderful entertaining space over 2,600 square feet of accommodation. The ground floor offers a characterful double reception and an extended kitchen/dining room, which leads to a charming and idyllic private garden. Natural light flows throughout every room, with the top floor bedroom benefiting from far reaching views towards Parliament Hill. The house is positioned close to the popular nursery and primary schools, and within easy walking distance of both Belsize Park and Gospel Oak stations.

- FIVE/SIX BEDROOMS
- BASEMENT WITH UTILITY AREA & CLOAKROOM
- TWO ROOF TERRACES
- EPC C
- LOVELY DOUBLE RECEPTION
- LARGE OFFICE/BEDROOM SIX
- PRIVATE REAR GARDEN
- FULLY EXTENDED KITCHEN/DINING ROOM
- TWO BATHROOMS (ONE EN-SUITE)
- COUNCIL TAX BAND G



Energy Efficiency Rating			Environmental Impact (CO ₂) Rating		
Best energy efficiency - lower energy costs	Current	Potential	Best environmental impact - lowest CO ₂ emissions	Current	Potential
A			A		
B			B		
C			C		
D			D		
E			E		
F			F		
G			G		
Not energy efficient - higher energy costs			Not environmentally friendly - higher CO ₂ emissions		
England & Wales			England & Wales		
EU Directive 2002/91/EC			EU Directive 2002/91/EC		