



Russell House

Eamont Street, NW8

Asking Price £535,000

Joint Sole Agent. A bright and well-proportioned 2-bedroom apartment, located on the 1st floor of this small purpose-built building.

The property offers 636 sq. ft. of accommodation and has a fantastic double aspect reception/dining room, 2 double bedrooms, wood flooring throughout and a large shower room.

Russell House is situated in Eamont Street and is less than a 5-minute walk from both Regent's Park and St John's Wood High Street.

CHESTERTONS



Russell House

Eamont Street, NW8

- 2 Bedroom Apartment
- 958 Year Leasehold
- 636 sq. ft.
- Double Aspect Reception
- Very Close to Regent's Park



Tenure: Leasehold
Service Charge: £3,399.50pa
Ground Rent: £50pa
Local Authority: Westminster
Council Tax Band: E

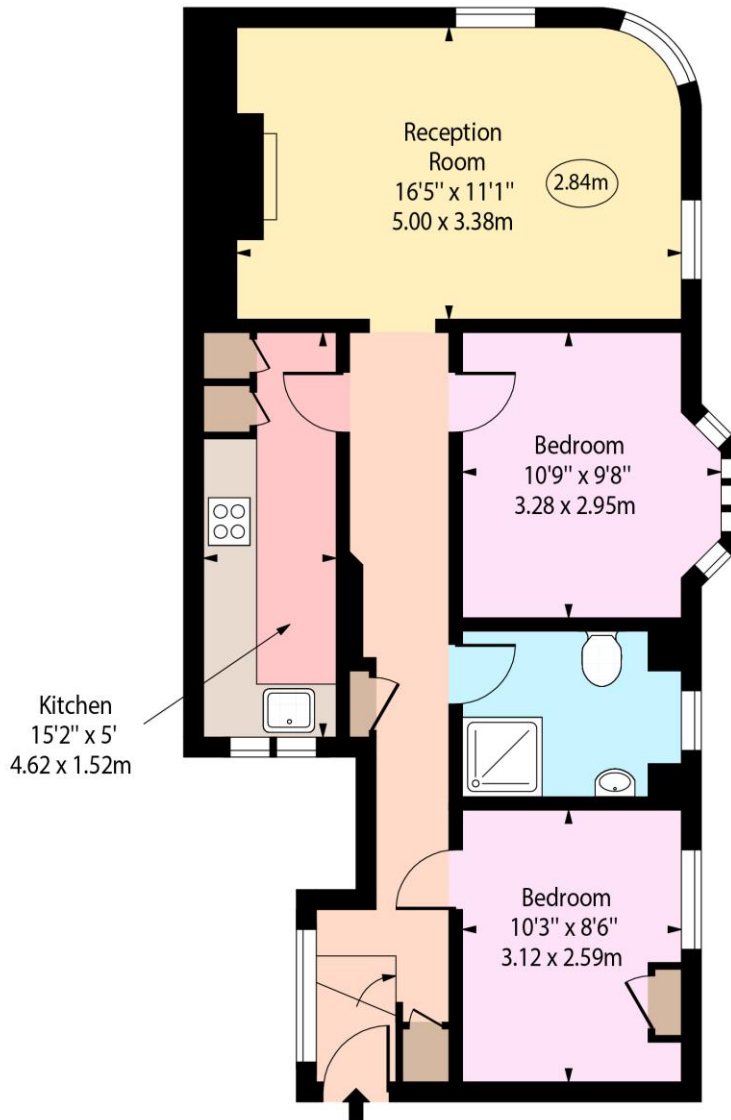
Score	Energy rating	Current	Potential
92+	A		
81-91	B		
69-80	C	71 C	80 C
55-68	D		
39-54	E		
21-38	F		
1-20	G		

Chestertons St John's Wood Sales

105 St. John's Wood Terrace
London
NW8 6PL
stjohnswood@chestertons.co.uk
020 3040 8611
chestertons.co.uk

Russell House,
Eamont Street,
St John's Wood, NW8

○ - Ceiling Height



First Floor

Approx Gross Internal Area 636 Sq Ft - 59.08 Sq M

Every attempt has been made to ensure the accuracy of the floor plan shown. However, all measurements, fixtures, fittings, and data shown are approximate interpretations and for illustrative purposes only. Measured according to the RICS. Not To Scale.

www.goldlens.co.uk

Produced for Chestertons

Ref. No. 031715E

