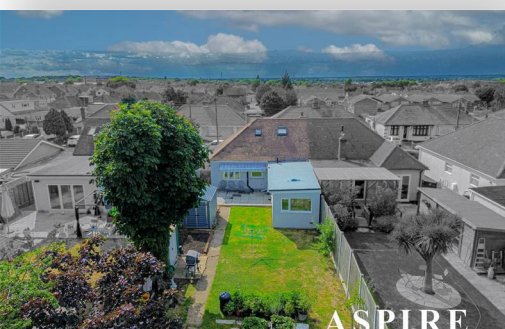


**To arrange a viewing contact us
today on 01268 777400**



Gifford Road, Benfleet £2,000 Per month

A beautifully presented, fully furnished property offering stylish and comfortable living throughout. This well-maintained home is ready to move into immediately, featuring modern furnishings, a well-equipped kitchen, and bright, spacious interiors.

The property provides a welcoming living area, generously sized bedrooms, and a contemporary bathroom, making it ideal for professionals, couples, or a small family. Finished to a high standard, it offers both practicality and comfort in a desirable setting.

Conveniently located with easy access to local amenities, transport links, and surrounding areas.

Available now on a fully furnished basis.
Rent: £2,000 per calendar month.

www.aspireestateagents.co.uk

Hallway

Lounge

22'10" x 10'1" (6.97 x 3.086)

Kitchen

24'1" x 7'11" (7.36 x 2.430)

Bathroom

7'10" x 6'7" (2.39 x 2.01)

Bedroom 1

10'7" x 8'10" (3.23 x 2.70)

Bedroom 2

9'6" x 6'2" (2.90 x 1.90)

Bedroom 3

12'1" x 10'4" (3.69 x 3.17)

Walk- In Wardrobe

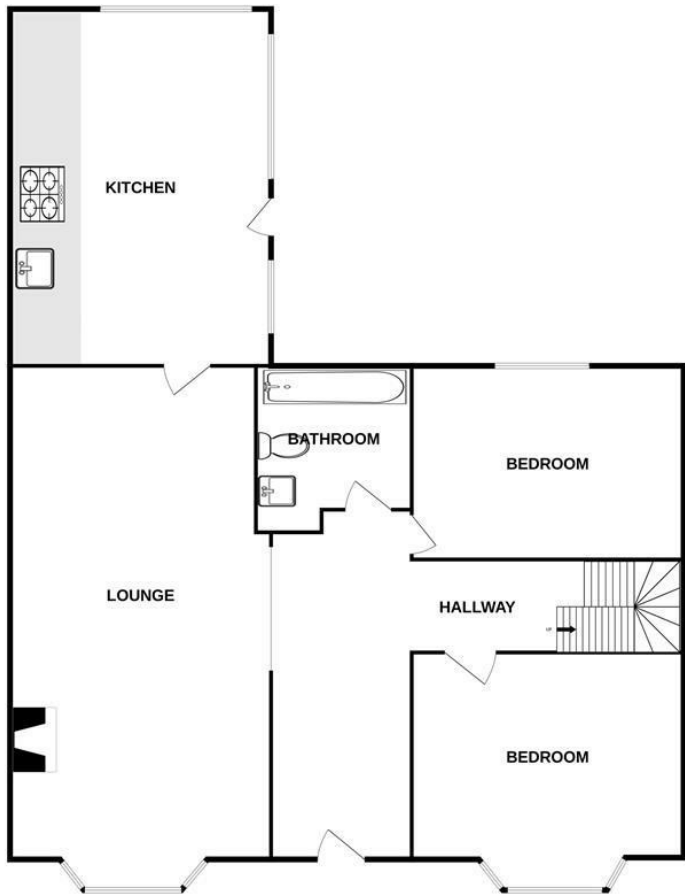
7'7" x 4'5" (2.32 x 1.35)

Landing

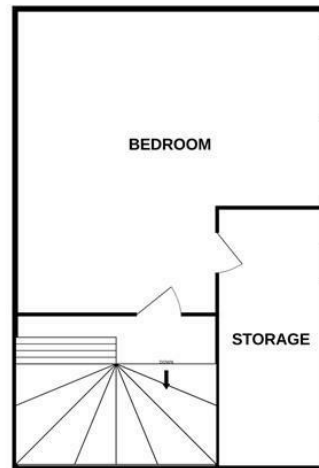
Garden

100 (30.48m)

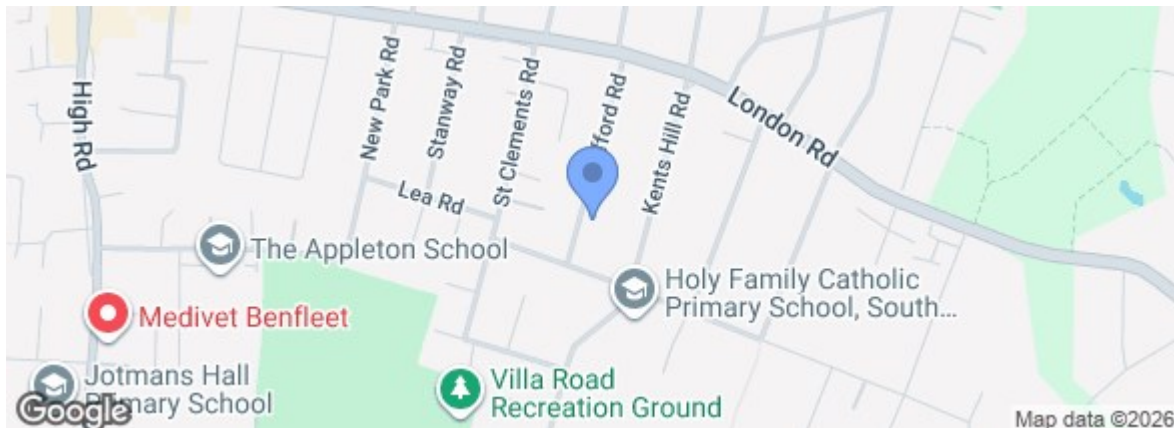
GROUND FLOOR



1ST FLOOR



Energy Efficiency Rating		Current	Potential
Very energy efficient - lower running costs			
(92 plus)	A		
(81-91)	B		
(69-80)	C		
(55-68)	D		
(39-54)	E		
(21-38)	F		
(1-20)	G		
Not energy efficient - higher running costs			
		56	78
England & Wales		EU Directive 2002/91/EC	
Environmental Impact (CO ₂) Rating		Current	Potential
Very environmentally friendly - lower CO ₂ emissions			
(92 plus)	A		
(81-91)	B		
(69-80)	C		
(55-68)	D		
(39-54)	E		
(21-38)	F		
(1-20)	G		
Not environmentally friendly - higher CO ₂ emissions			
England & Wales		EU Directive 2002/91/EC	



Under the Property Misdescriptions Act 1991 we make every effort to ensure our sales details are accurate but they are a general outline and do not constitute any part of an offer or contract. Any services, equipment and fittings have not been tested and no warranty can be given as to their condition. We strongly recommend that all the information provided be verified by your advisors and in particular, measurements required for a specific purpose such as fitted furniture or carpets. Please tell us if you have any problems and members of our branches will help either over the phone or in person. A copy of our complaints procedure is available on request. The details are issued on the strict understanding that any negotiations in respect of the property named herein are conducted through Aspire Estate Agents.