



£460,000

Olive Court, Sutton-In-Ashfield,



Welcome to **BuckleyBrown**, where every home is carefully presented, so you can explore with clarity and confidence.

BuckleyBrown
ESTATE AGENTS

"I consider this a well-planned home that offers a good level of internal space. The layout works well, with a natural flow between rooms and flexibility for a range of uses, making it a solid and practical example within its category."

- Luke, Valuer



Ready to be impressed?

From the moment you arrive, this five-bedroom detached home makes an immediate impression.

With an attractive frontage and well-maintained driveway, setting the tone for what lies beyond. Internally, the property offers generously proportioned and thoughtfully arranged accommodation, well suited to modern family living and providing excellent versatility for a range of buyers seeking both comfort and style.



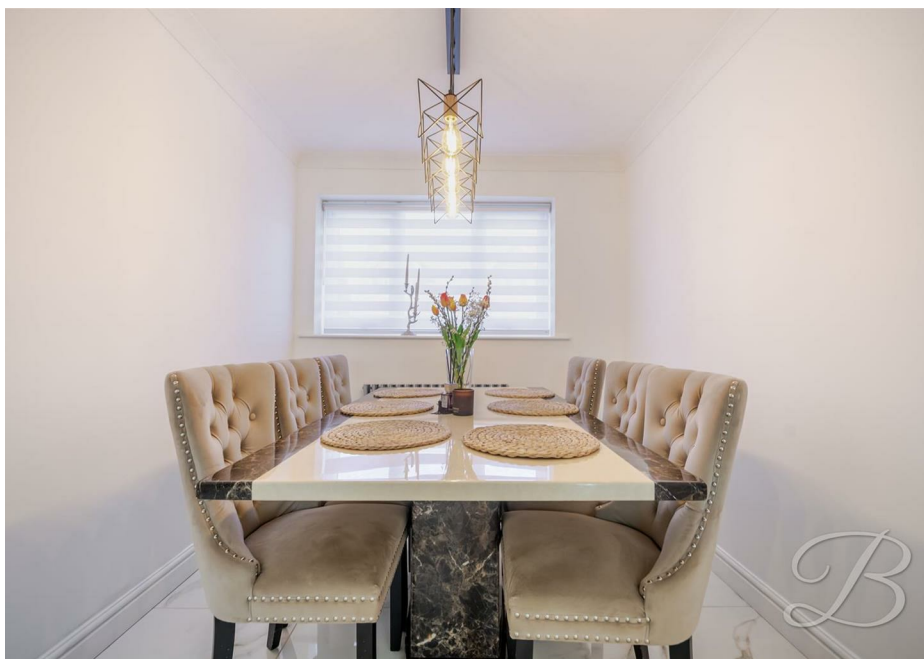
Step Inside

This is a modern and well-presented detached house situated in Sutton-in-Ashfield, offering generous and versatile accommodation throughout, ideal

The ground floor comprises a welcoming entrance hall leading to a spacious living room, a stunning open plan kitchen/dining area fitted with high-quality and stylish fixtures and fittings, a separate office, utility room, additional living room, and a WC. The property is beautifully decorated throughout, with a thoughtful layout that works perfectly for both everyday life and entertaining.

To the first floor, there are five well-proportioned bedrooms, including a principal bedroom with en suite, along with a modern family shower room serving the remaining rooms. Each space continues the high standard of presentation seen throughout the home.

Externally, the property benefits from a large driveway and garage providing ample off-road parking. To the rear is a beautifully designed garden featuring a decking and pergola seating area, ideal for outdoor entertaining, along with a well-maintained lawn providing further usable outdoor space.





BuckleyBrown
ESTATE AGENTS







Life in Sutton-In-Ashfield

Sutton-in-Ashfield is a well-established and popular market town located in the Ashfield district of Nottinghamshire, offering a practical and well-

Ideally positioned close to Mansfield and within easy reach of Nottingham, the town appeals to a wide range of buyers seeking convenience, accessibility and a well-served residential location.

The town offers a good selection of everyday amenities, centred around its traditional high street and surrounding retail areas. Residents benefit from a mix of supermarkets, independent shops, cafés and leisure facilities, along with a range of schools and healthcare services. Brierley Park and other nearby recreational spaces provide useful outdoor areas, making the location particularly appealing for families and those with active lifestyles.

Surrounded by pockets of open space and access to nearby countryside, Sutton-in-Ashfield offers a balance between town living and access to the outdoors. Local parks and walking routes provide opportunities for leisure and relaxation, while the wider Nottinghamshire countryside is only a short distance away, offering further green space for walking, cycling and outdoor activities.

The town is also well connected, with convenient access to the A38 and nearby junctions of the M1 motorway, making commuting to Nottingham, Derby and Sheffield straightforward. Sutton Parkway railway station also provides regular services to Nottingham and Worksop, adding further convenience for commuters and travel.





Whilst every attempt has been made to ensure the accuracy of the floor plan contained here, no responsibility is taken for incorrect measurements of doors, windows, appliances and room or any error, omission or misstatement. Exterior and interior walls are drawn to scale based on interior measurements. Any figure given is for initial guidance only and should not be relied on as basis of valuation. These plans are for marketing purposes only and should be used as such by any prospective purchase. Specially no guarantee is should not be relied on as a basis of valuation. These plans are for marketing purposes only and should be used as such by any prospective purchase. Specifically no guarantee is given on the total square footage of the property if quoted on this plan.

CC Ltd ©2018

Key Features

Modern and beautifully presented five-bedroom detached family home

Stylish and high-quality fixtures and fittings throughout

Spacious and versatile ground floor accommodation

Stunning open plan kitchen/dining area ideal for modern living

Useful home office and separate utility room

Principal bedroom with en suite shower room

Well-decorated throughout with a contemporary finish

BuckleyBrown
ESTATE AGENTS



These particulars are intended as a guide only and do not form part of any offer or contract. All descriptions, measurements, images and plans are provided for illustration purposes and should not be relied upon as statements of fact. Prospective purchasers should satisfy themselves as to the accuracy of the information. Buckley Brown Estate Agents accept no liability for any loss arising from reliance on these details.

© Buckley Brown Estate Agents 2026. All rights reserved.

Exceptional homes deserve
exceptional representation.

Let's Chat.

01623 633633

mansfield@buckleybrown.co.uk

buckleybrown.co.uk

BuckleyBrown
ESTATE AGENTS