



**A CHARMING FOUR BEDROOM LINK-DETACHED FAMILY HOME WITH NO ONWARD CHAIN**

The Avenue, Northwood, Middlesex, HA6 2NJ



The Avenue, Northwood, Middlesex, HA6 2NJ

**FOUR BEDROOMS • TWO BATHROOMS •  
TWO RECEPTION ROOMS • KITCHEN •  
DOWNSTAIRS W/C • SOUTH-FACING REAR  
GARDEN • DRIVEWAY PARKING • DOUBLE  
GARAGE • CLOSE TO NORTHWOOD TOWN  
AND STATION • CHAIN FREE**

### Description

This well-presented link-detached four-bedroom family home offers spacious and versatile accommodation set over two floors.

The ground floor comprises a welcoming dining room to the front, while to the rear you will find a fitted kitchen and a generous living room with doors opening out to the rear garden. A convenient downstairs w/c completes this level.

Upstairs, the property boasts four well-proportioned bedrooms, with the principal bedroom benefiting from its own ensuite bathroom. A further family bathroom serves the remaining bedrooms.





Externally, the property features a private, easily maintainable south-facing rear garden with a patio area.

To the front, a driveway provides off-street parking and access to the double garage, adding further practicality to this attractive home.

### **Location**

Northwood provides a range of shopping facilities including Waitrose supermarket, a variety of restaurants and other amenities with the Metropolitan Line station providing access to Baker Street and the City. There is a plethora of state and private schooling together with a wide choice of recreational facilities, which include golf courses and fitness centres. The M1, M40 and M25 motorways are also accessible.

NB this property is situated within the proximity of the ULEZ, if your vehicle does not comply charges may apply.

### **Additional Information**

Tenure: Freehold

Local Authority: London Borough of Hillingdon

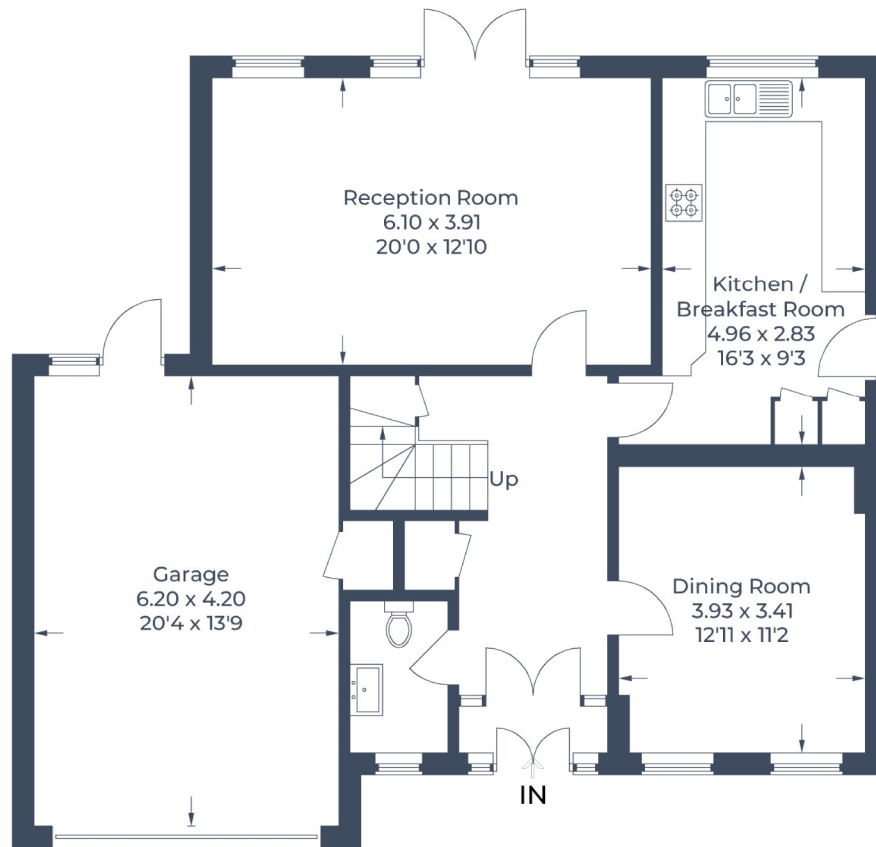
Council Tax Band: G

Energy Efficiency Rating: D

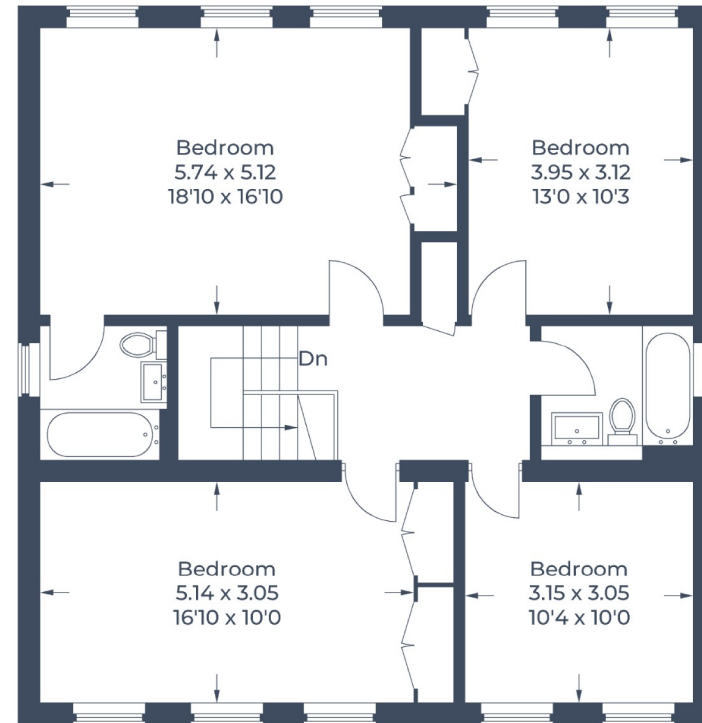
For additional information, please refer to [www.robsonsworld.com](http://www.robsonsworld.com) or call us on: 01923 835355.



Approximate Gross Internal Area  
Ground Floor = 73.1 sq m / 787 sq ft  
First Floor = 83.7 sq m / 901 sq ft  
Garage = 26.9 sq m / 289 sq ft  
Total = 183.7 sq m / 1,977 sq ft



**Ground Floor**



**First Floor**

Illustration for identification purposes only,  
measurements are approximate, not to scale.  
© CJ Property Marketing Produced for Rahul Jora

**ROBSONS**

7 Clive Parade, Northwood, HA6 2QF  
Tel: 01923 835355 Email: northwood@robsonswb.com  
[www.robsonswb.com](http://www.robsonswb.com)

SCAN TO VISIT



OUR WEBSITE

Important notice: Robsons, their clients and any joint agents give notice that 1: They are not authorised to make or give any representations or warranties in relation to the property either here or elsewhere, either on their own behalf or on behalf of their client or otherwise. They assume no responsibility for any statement that may be made in these particulars. These particulars do not form part of any offer or contract and must not be relied upon as statements or representations of fact. 2: Any areas, measurements or distances are approximate. Plot sizes and dimensions are taken from Promap and are approximate. The text, photographs and plans are for guidance only and are not necessarily comprehensive. It should not be assumed that the property has all necessary planning, building regulation or other consents and Robsons have not tested any services, equipment or facilities. Purchasers must satisfy themselves by inspection or otherwise.