

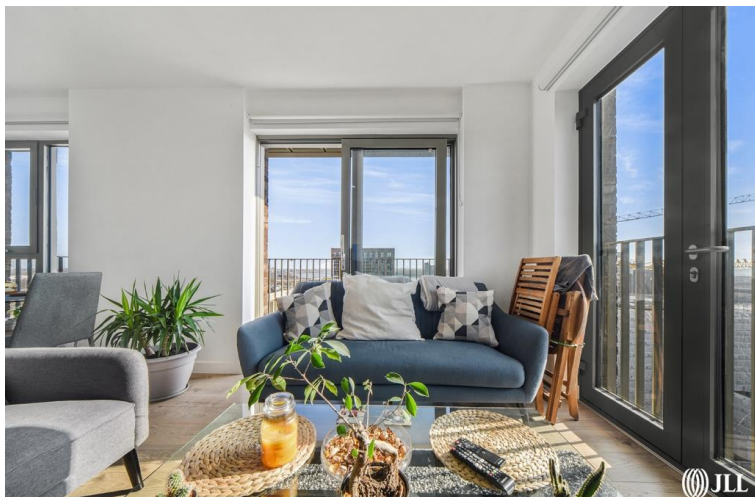


Atlantis Avenue, London E16

Price £1,850 per month - Furnished







Description

A modern one bedroom apartment in Royal Docks close to Gallions Reach DLR station. The property will be finished to the highest specification and consist of one bedroom and one bathroom with an open plan living area. You will have access to a east facing Private Residents Balcony and this apartment comes furnished with further benefits which include a 24 hr Concierge.

We understand that cooling / heating is delivered via a communal system for which separate charges apply.

Rent is payable on a monthly basis and you may be required to pay more than a month's rent in advance, depending on your circumstances. You will be required to pay a 1 week holding deposit following a successful offer. Utility bills, council tax, telephone line and broadband are not included in the rent.

Rent: £415 per week

As well as paying the rent, you may also be required to make the following permitted payments. If your tenancy does not qualify as an AST, additional fees may apply.

Please visit jll.co.uk/fees for details of fees which may be payable when renting a property

EPC: B

- 1 Bedroom
- 1 Bathroom
- 24 hr Concierge
- Balcony
- Parking by separate negotiation
- Furnished
- Close to Gallions Reach DLR
- EPC: B
- Council Tax: Band C
- Deposit Amount: £2074.99

Floorplan

633 sq ft | 59 sq m

GALLEY HOUSE

APPROXIMATE GROSS INTERNAL FLOOR AREA 633 SQ.FT (58.8 SQ.M)



NINTH FLOOR



This floor plan has been defined by the RICS Code of Measurement. This floor plan and all others are for approximate representative purposes only and upon usage is agreed to as such by the client.

WWW: hdvirtualart.com | TEL: 0203.974.1567 | EMAIL: info@hdvirtualart.com

Canary Wharf
11 Westferry Circus,
London E14 4HE
+4420 7715 9700
Lettingscanarywharf@eu.jll.co

Urban living, your way.

jll.co.uk/residential

© 2019 Jones Lang LaSalle IP, Inc. All rights reserved. All information contained herein is from sources deemed reliable; however, no representation or warranty is made to the accuracy thereof.

