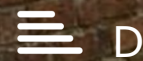
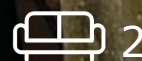




32 Victoria Park

Kingswood, Bristol, BS15 1SA

Asking price £318,500



32 Victoria Park



Description

Tucked away in a quiet cul-de-sac just a couple of minutes walk from Kingswood high with its many shops, cafes and bakeries, is this stunning Victorian end terrace full of character with a period fireplace in every room.

Deceptively spacious this lovely home enjoys a large open plan living space with plenty of light from patio doors to the garden. The stylish kitchen has wood effect worktops and leads to a utility room with excellent storage.

On the first floor the main bedroom enjoys plenty of light from three windows and a deep built in wardrobe. There's a further double bedroom along with a generous sized bathroom with separate bath and shower cubicle. The loft is boarded creating excellent storage.

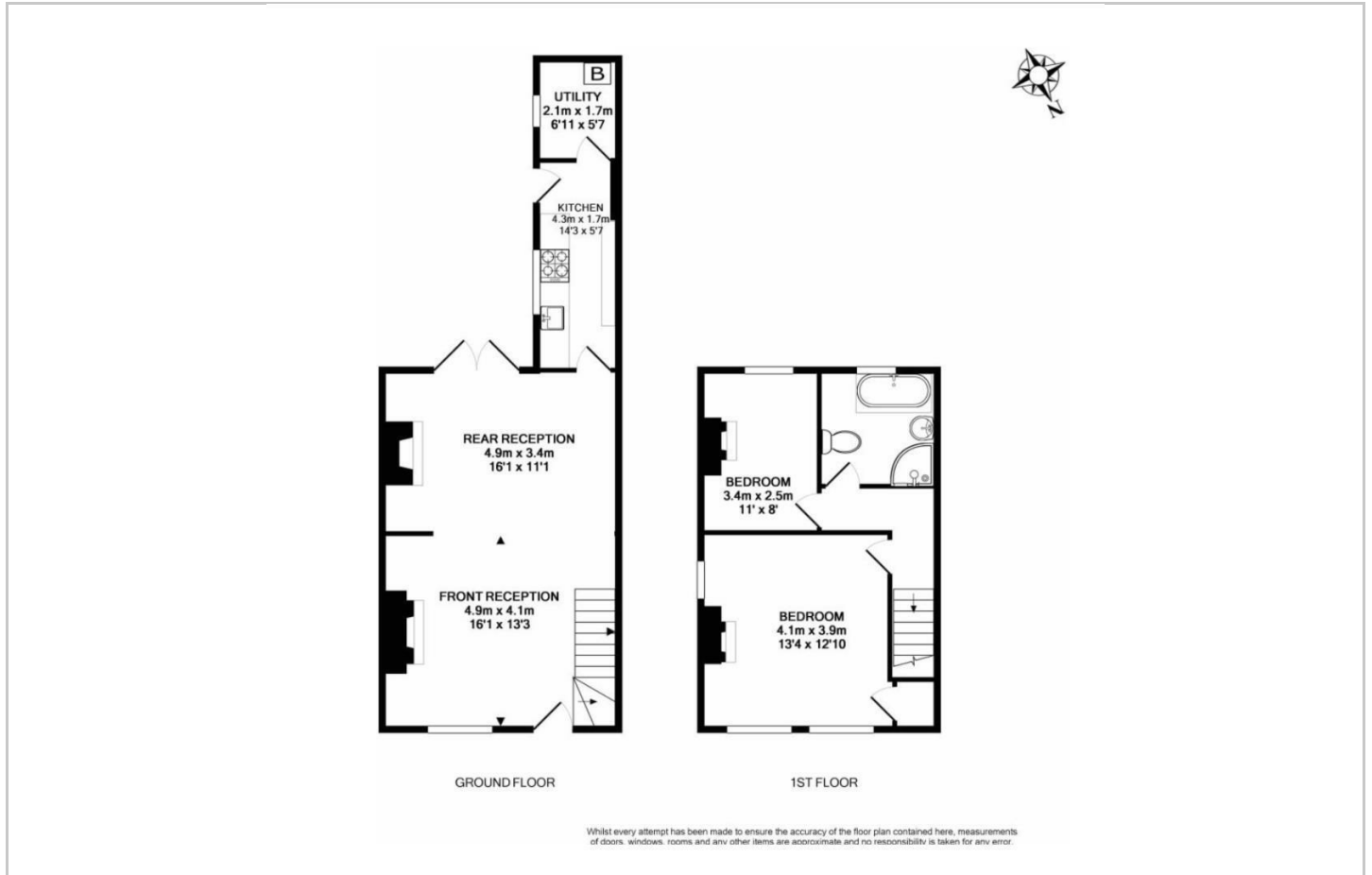
To the rear there's a large south facing garden with mature trees, bushes and flowers that come back year on year, including a plum tree, climbing clematis

- VICTORIAN END TERRACE
- CLOSE TO KINGSWOOD SHOPS
- QUIET CUL-de SAC
- TWO BEDROOMS
- OPEN PLAN LIVING
- UPSTAIRS BATHROOM
- STYLISH KITCHEN
- UTILITY
- LOVELY SOUTH FACING GARDEN

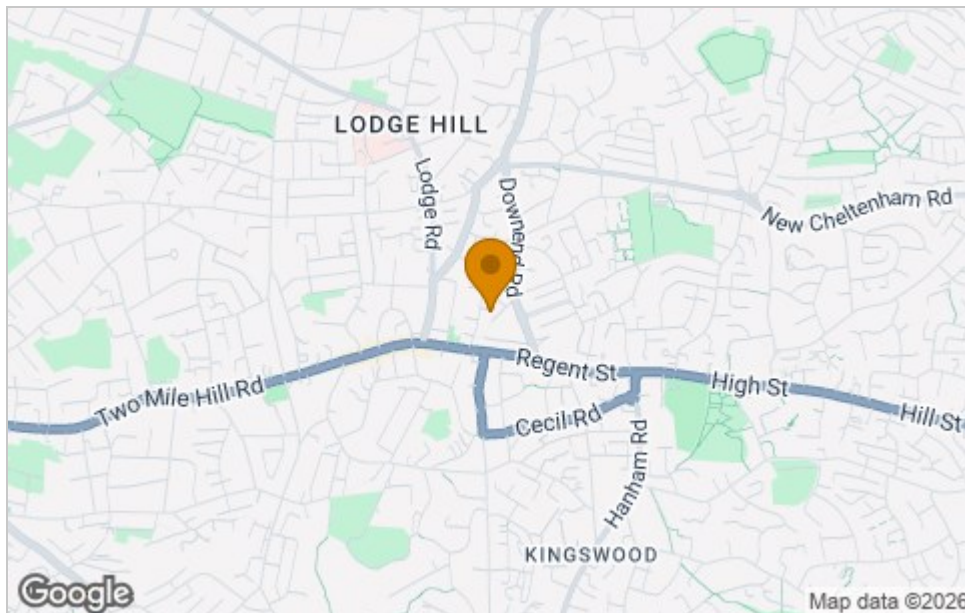




Floor Plan



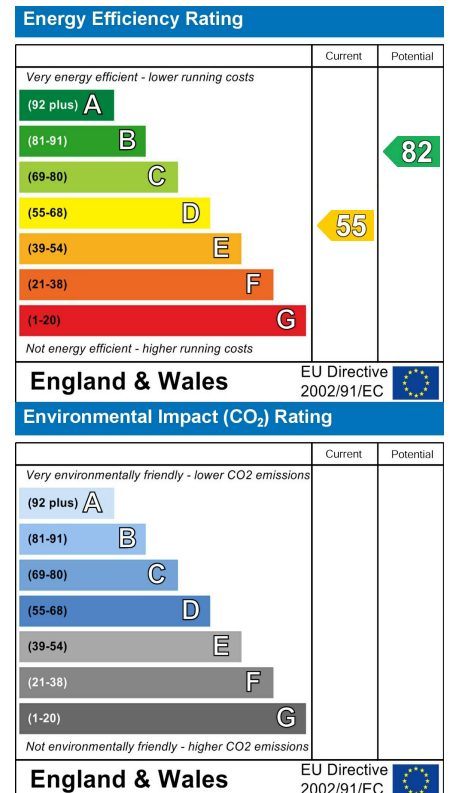
Area Map



Viewing

Please contact our House + Co Property (Sales) Office on 0117 907 0020 if you wish to arrange a viewing appointment for this property or require further information.

Energy Efficiency Graph



These particulars, whilst believed to be accurate are set out as a general outline only for guidance and do not constitute any part of an offer or contract. Intending purchasers should not rely on them as statements of representation of fact, but must satisfy themselves by inspection or otherwise as to their accuracy. No person in this firm's employment has the authority to make or give any representation or warranty in respect of the property.