



Lowforce

Wilnecote, Tamworth, B77 4LU

£215,000

Property Features

- Two bedroom end terrace home in a desirable residential setting
- Spacious and bright living room with modern decor
- Open and flowing ground floor layout ideal for family living
- Conservatory providing additional reception or dining space
- Well fitted kitchen with ample storage and worktop space
- Two well proportioned bedrooms on the first floor
- Contemporary family bathroom with neutral finish
- Generous rear garden with lawn and decking areas
- Large summerhouse to the front of the rear garden
- Close to local amenities and transport links

Full Description

This well presented two bedroom end terrace home offers generous and versatile living space, ideal for first time buyers, downsizers or small families. The property has been well maintained and enhanced with a bright conservatory, creating a flexible layout that suits both everyday living and entertaining.

With spacious interiors, two comfortable bedrooms, and an impressive rear garden complete with a summer house, the home provides an excellent balance of indoor and outdoor living. Occupying a sought after end terrace setting, this property benefits from increased privacy and a more generous sense of space compared to adjacent properties.

THE FORE

To the front, the property benefits from its end terrace position, offering a larger than average frontage with a private driveway providing off road parking. The exterior presents a clean and well kept appearance, and a neat approach enhancing its kerb appeal.

The entrance is easily accessible and set back slightly from the road, creating a welcoming and practical arrival space. The additional space to the side of the property further enhances the sense of openness and convenience.

GROUND FLOOR

Upon entering, you are welcomed into a bright and spacious living room, finished in a modern style with ample room for both seating and relaxation. The space flows naturally through to the rear of the property, creating a sociable and open feel.

To the rear, a conservatory provides an additional reception area, flooded with natural light and offering views over the garden, making it an ideal space for dining or relaxing. The kitchen is well appointed with a range of fitted units and worktop space, designed to be both functional and stylish for



everyday use.

LIVING ROOM

16' x 11' 5" (4.88m x 3.48m)

KITCHEN

7' 3" x 15' 8" (2.21m x 4.78m)

STORAGE

4' 2" x 7' 2" (1.27m x 2.18m)

FIRST FLOOR

The first floor comprises two well proportioned bedrooms, both offering comfortable accommodation with space for freestanding furniture. The principal bedroom is particularly generous, while the second bedroom is ideal as a guest room, nursery, or home office.

A modern family bathroom serves the first floor, fitted with a bath and contemporary fixtures, and finished in a clean, neutral style. The layout is practical and well suited to a range of lifestyles.

BEDROOM ONE

8' 7" x 13' 2" (2.62m x 4.01m)

BEDROOM TWO

8' x 10' 1" (2.44m x 3.07m)

BATHROOM

6' 8" x 7' 5" (2.03m x 2.26m)

THE REAR

To the rear, the property boasts an impressive and well maintained garden, offering a combination of lawn and decking areas. This creates a versatile outdoor space, perfect for families, entertaining, or simply enjoying the outdoors.

A standout feature is the summer house positioned at the front of the garden, providing an excellent additional space that could be used as a home office, studio, or relaxation area. With direct access from the garden, this feature enhances the overall functionality and appeal of the outdoor space, making it a true extension of the home.

CONSERVATORY

12' 1" x 9' (3.68m x 2.74m)

SUMMERHOUSE

10' 4" x 15' 4" (3.15m x 4.67m)



ANTI MONEY LAUNDERING

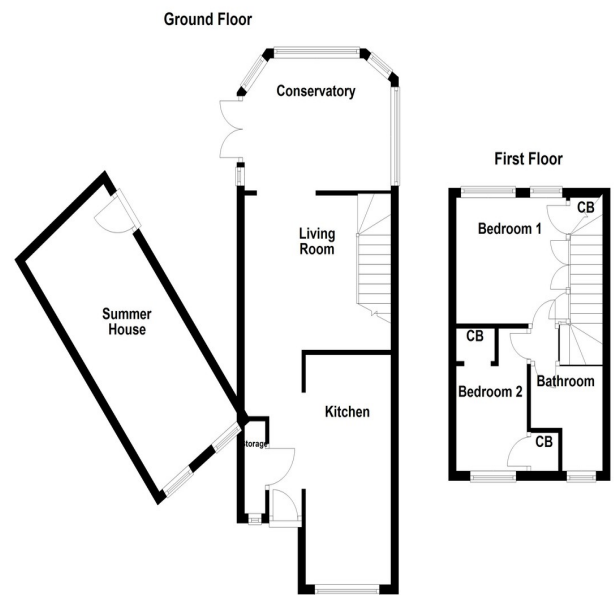
In accordance with the most recent Anti Money Laundering Legislation, buyers will be required to provide proof of identity and address to the Taylor Cole Estate Agents once an offer has been submitted and accepted (subject to contract) prior to Solicitors being instructed.

TENURE

We have been advised that this property is freehold however, prospective buyers are advised to verify the position with their solicitor / legal representative.

VIEWING

By prior appointment with Taylor Cole Estate Agents on the contact number provided.



8 Victoria Road
Tamworth
Staffordshire
B79 7HL

www.taylorcole.co.uk
sales@taylorcole.co.uk
01827 311412

Agents Note: Whilst every care has been taken to prepare these sales particulars, they are for guidance purposes only. All measurements are approximate are for general guidance purposes only and whilst every care has been taken to ensure their accuracy, they should not be relied upon and potential buyers are advised to recheck the measurements