



Price
£600,000

Freehold

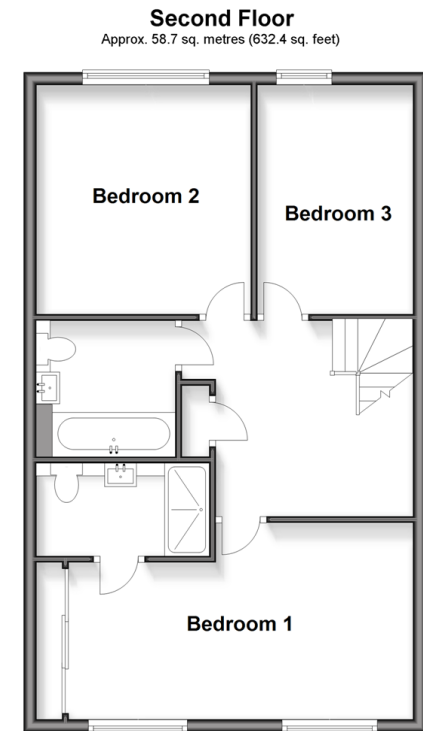
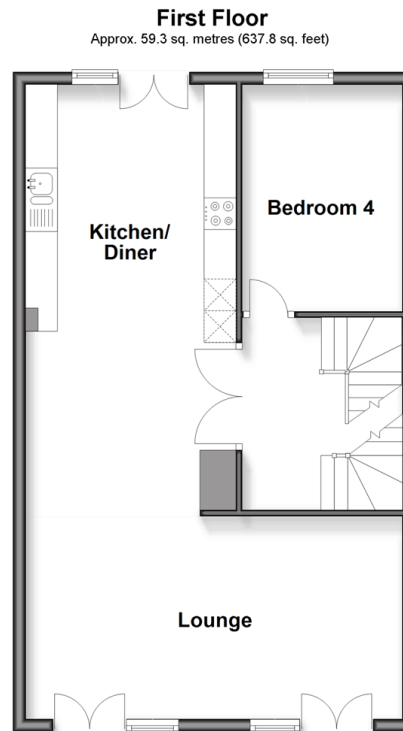
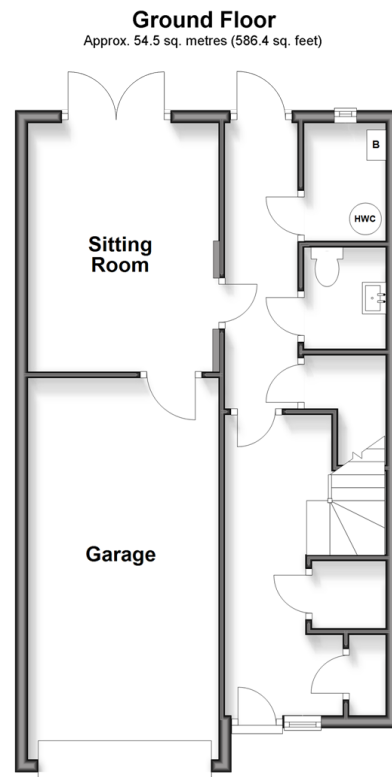
4x  2x  2x 

**Common Creek Wharf,
Rochester, Kent, ME1**

OVER 60?

Secure this property
for up to **59% less!**

Wards
Helping you move forwards



Accommodation

GROUND FLOOR

Hallway
Cloakroom: 5'2 x 4'2 (1.58m x 1.27m)
Sitting Room: 12'10 x 9'7 (3.91m x 2.92m)
Integral Garage: 19'8 x 12'10 (6.00m x 3.91m)

FIRST FLOOR

Landing
Kitchen/Diner: 19'5 x 10'9 (5.92m x 3.28m)
Lounge: 19'4 x 12'8 (5.90m x 3.86m)
Bedroom 4: 11'10 x 8'3 (3.61m x 2.52m)

SECOND FLOOR

Landing
Bedroom 1: 17'2 x 10'2 (5.24m x 3.10m)
En-Suite Shower Room: 8'10 x 4'10 (2.69m x 1.47m)
Bedroom 2: 11'7 x 11'0 (3.53m x 3.36m)
Bedroom 3: 11'10 x 7'10 (3.61m x 2.39m)
Bathroom: 7'0 x 6'10 (2.14m x 2.08m)

OUTSIDE

Rear Garden
Off-Road Parking



Main features

- Immaculately presented!
- Exclusive riverside development surrounded by river views
- Garage and off-road parking
- Cloakroom, en-suite and family bathroom
- Minutes away from the high speed station and historic High Street



Nearest Schools

Primary Schools: Rochester Riverside Church of England School 0.2 miles

Secondary Schools: Fort Pitt Grammar School 0.7 miles



Transport Information

Train Stations: Rochester 0.2 miles, Strood 0.4 miles, Chatham 0.8 miles



Address

Common Creek Wharf, Rochester, Kent, ME1



Directions

For directions to this property please contact us.



Call Rochester Branch 01634 830925 ■ wardsofkent.co.uk



- Legal advice should be taken to verify fixtures/fittings, planning, alterations and/or lease details
- Appliances & services are untested, dimensions are approximate and floor plans are not to scale
- Through a Homewise Home For Life Plan people aged 60+ can secure this property for up to 59% less, by purchasing a Lifetime Lease.



11530003/20250305/DG/AB