

sansome  
& george



Greenacres Spanish Green, Stratfield Turgis

In Excess of £850,000

Enhanced with AI by STREET\_02

# Greenacres Spanish Green

Stratfield Turgis, Hook

This exceptional five-bedroom detached home offers spacious and versatile living accommodation, thoughtfully arranged across a generous plot in a highly sought-after location. The property is presented with no onward chain, providing a seamless opportunity for buyers seeking a swift and uncomplicated purchase. Upon entry, you are greeted by a welcoming hallway that leads to four well-proportioned reception rooms, ideal for formal entertaining, family gatherings, or creating dedicated spaces for work and relaxation. The modern kitchen features ample storage and workspace, perfectly suited to both every-day living and larger-scale entertaining. Upstairs, five comfortable bedrooms await, including two with en-suite facilities, offering flexibility for family members or guests. The remaining bedrooms are serviced by a well-appointed family bathroom, ensuring convenience for all. This impressive home combines classic design with practical features, making it an ideal choice for families in search of both space and comfort.

The property is set within a substantial plot, providing a wealth of outside space for leisure and recreation. The mature rear garden is mainly laid to lawn, bordered by established shrubs and trees that create a sense of privacy and tranquillity. A spacious patio area offers the perfect setting for al fresco dining or summer gatherings, while the expansive lawn is ideal for children's play or gardening enthusiasts. To the front, a large driveway provides ample off-road parking for multiple vehicles, complemented by a double garage that offers additional storage or workshop potential. Side access connects the front and rear gardens, enhancing the convenience and useability of the outdoor areas. The overall setting delivers a peaceful retreat from the bustle of daily life, yet remains within easy reach of local amenities, reputable schools, and transport links. This outstanding home offers a rare combination of generous internal space and superb outside areas, making it a truly desirable family residence.

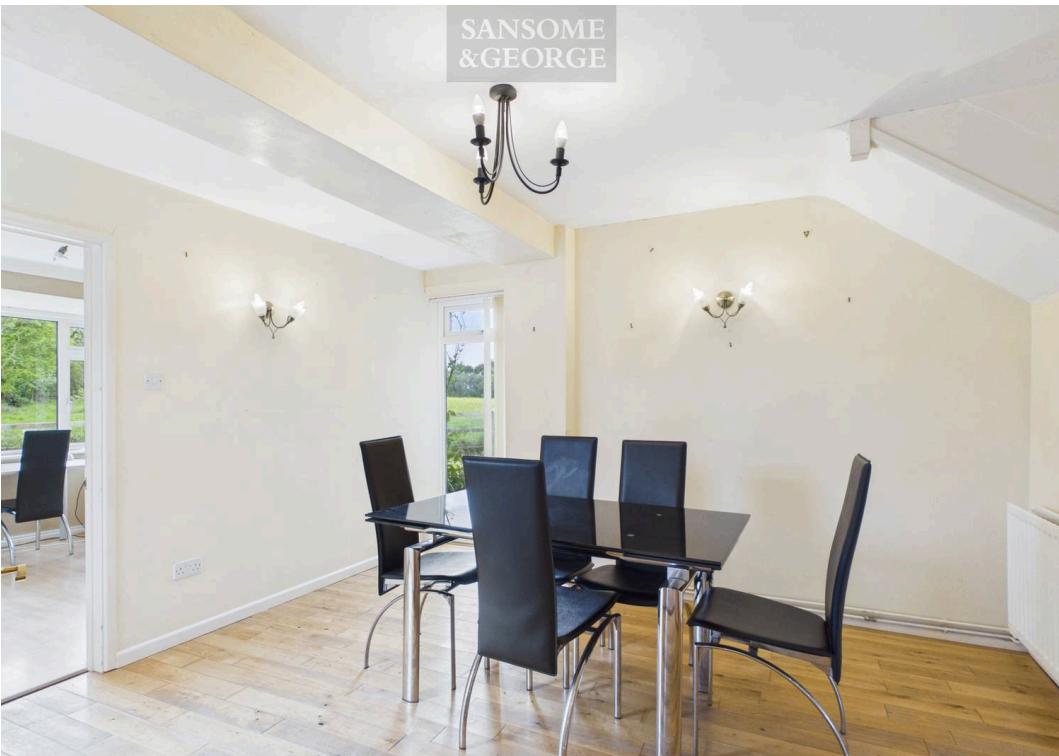
Council Tax band: F

Tenure: Freehold

EPC Energy Efficiency Rating: D

EPC Environmental Impact Rating: E





SANSOME  
& GEORGE

## Greenacres Spanish Green

Stratfield Turgis, Hook

- 5 Bedroom detached home
- Generous plot
- 4 Reception rooms
- 2 En-suites to Bedrooms
- No Onward Chain
- Approx 1/3 Arce plot



sansome  
& george

SANSOME  
&GEORGE



SANSOME  
&GEORGE



SANSOME  
&GEORGE



SANSOME  
&GEORGE





Floor 0 Building 1



Floor 1 Building 1



Floor 0 Building 2

Approximate total area<sup>(1)</sup>  
2583 ft<sup>2</sup>  
Reduced headroom  
15 ft<sup>2</sup>

(1) Excluding balconies and terraces

Reduced headroom  
..... Below 5 ft

Calculations reference the RICS IPMS 3C standard. Measurements are approximate and not to scale. This floor plan is intended for illustration only.

GIRAFFE360

SANSOME  
&GEORGE



SANSOME  
&GEORGE



SANSOME  
&GEORGE





## Sansome & George Bramley Office

Sherfield Road, Bramley, Tadley – RG26 5AG

01256 882979 • • [www.sansomeandgeorge.co.uk/](http://www.sansomeandgeorge.co.uk/)

Disclaimer: Every attempt has been made to ensure accuracy, however these property particulars are approximate and for illustrative purposes only. They have been prepared in good faith and they are not intended to constitute part of an offer of contract. We have not carried out a structural survey and the services, appliances and specific fittings have not been tested. All photographs, measurements, floor plans and distances referred to are given as a guide only