



4 Elm Gardens, Claygate

Esher

£899,950

**newton
huxley.**

4 Elm Gardens

Claygate, Esher

Well maintained 2 bed bungalow in a quiet cul-de-sac near amenities and schools. No onward chain. Development potential (STPP). Ready to move in. Council Tax band: F

Tenure: Freehold

EPC Energy Efficiency Rating: C

EPC Environmental Impact Rating:

- No Onward Chain
- Well Maintained Bungalow
- Detached Double Garage
- Attractive Garden
- Two/Three Bedrooms
- Sought After Cul-De-Sac
- Development Potential STPP
- EPC: C





Elm Gardens

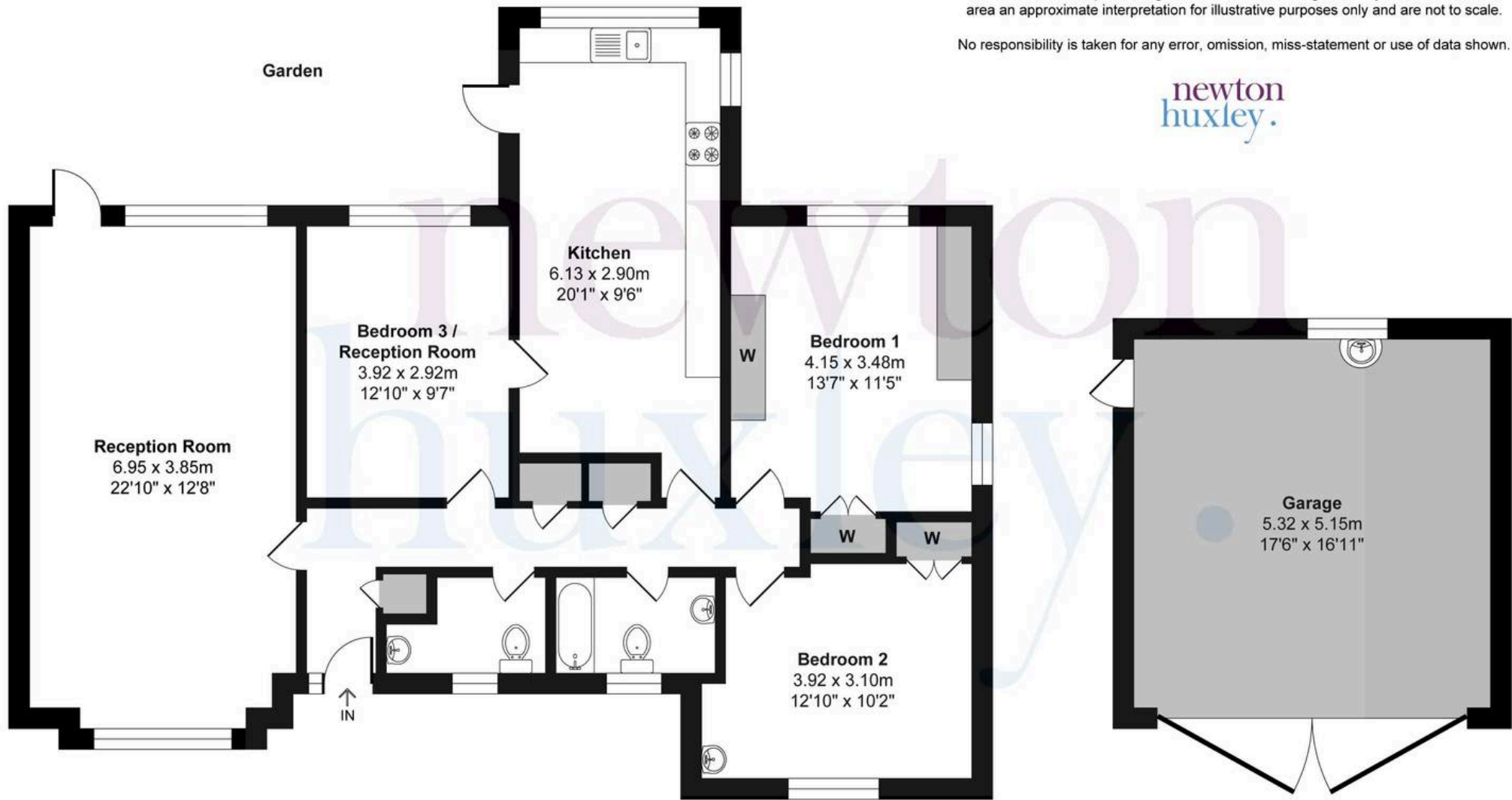
Total Area: 131.80 m² ... 1418.68 ft²

FOR ILLUSTRATIVE PURPOSE ONLY.

Whilst every attempt has been made to ensure the accuracy of the floor plan shown, all measurements, positioning, fixtures, features, fittings and any other data shown are an approximate interpretation for illustrative purposes only and are not to scale.

No responsibility is taken for any error, omission, miss-statement or use of data shown.

*newton
huxley.*



Ground Floor



*newton
huxley.*