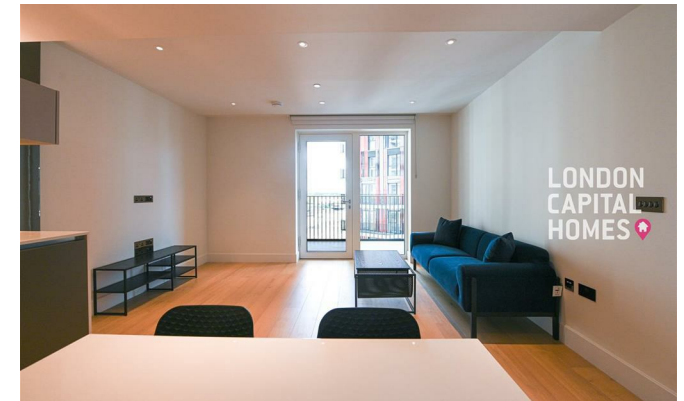


**LONDON
VICTORIA
GROUPS** 



Cascade Apartments, Cascade Way

, London W12 7SR

- Modern 1-Bed Apartment
 - Private Balcony
- Gym & Private Cinemas
 - Meeting Rooms
- Short Walk To Westfield London
- Open-Plan Living And Dining Area
 - Swimming Pool With Spa
 - Business Lounge
- Close To White City and Wood Lane Station
 - EPC-B

£3,050 Per Month



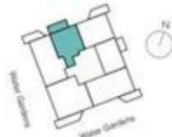
Local Authority **Hammersmith
And Fulham**
Council Tax Band **E**
EPC Rating **B**



Levels: 01 - 10

Plots: L.01.06, L.02.06, L.03.06, L.04.06, L.05.06, L.06.06,
L.07.06, L.08.06, L.09.06, L.10.06

Internal area	54.9 m²	591 sq ft
External area	7.2 m²	77 sq ft
Kitchen/Living/Dining	4.28 x 6.50 m	14ft 0" x 21ft 4"
Bedroom	2.80 x 4.40 m	9ft 2" x 14ft 5"
Balcony	1.64 x 4.87 m	5ft 5" x 16ft 0"



London Office Office
Spaces Victoria, 25 Wilton Road, Pimlico,
London, SW1V 1LW

Contact
020 3084 3094
XL@londonvictoriagroups.co.uk
www.londonvictoriagroups.co.uk

Agents Note: Whilst every care has been taken to prepare these particulars, they are for guidance purposes only. All measurements are approximate and for general guidance purposes only and whilst every care has been taken to ensure accuracy, they should not be relied upon and potential buyers/tenants are advised to recheck the measurements.

