



CHATTERTON | REES



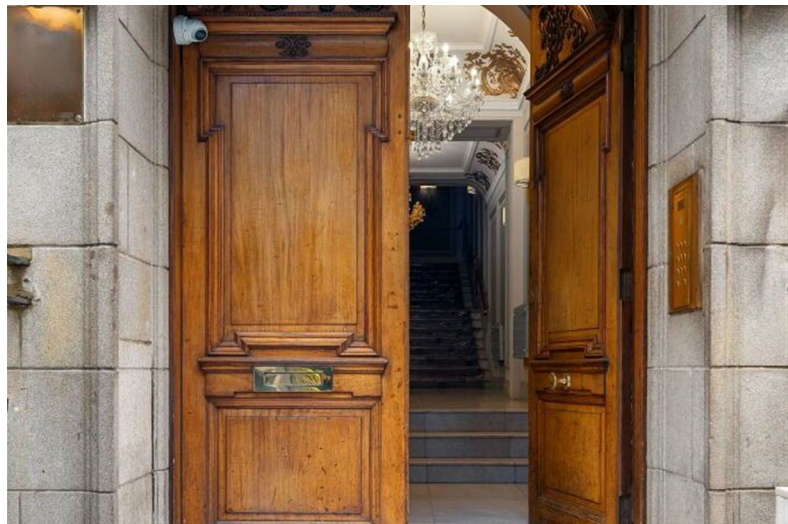
33 Dover Street

, London, W1S 4NF

£5,000 Per month



33 Dover Street



Description

Stunning three-bedroom first-floor apartment (1,162 sq ft) set within a prestigious portered mansion block in the heart of Mayfair. Moments from Berkeley Square and Green Park station, the property offers bright, spacious interiors with high ceilings, period features and elegant finishes.

Comprising a large reception with bay window and dining area, separate kitchen/diner, principal bedroom with en-suite, two further double bedrooms, family bathroom, guest WC and ample storage. The building also benefits from lift access and a concierge.

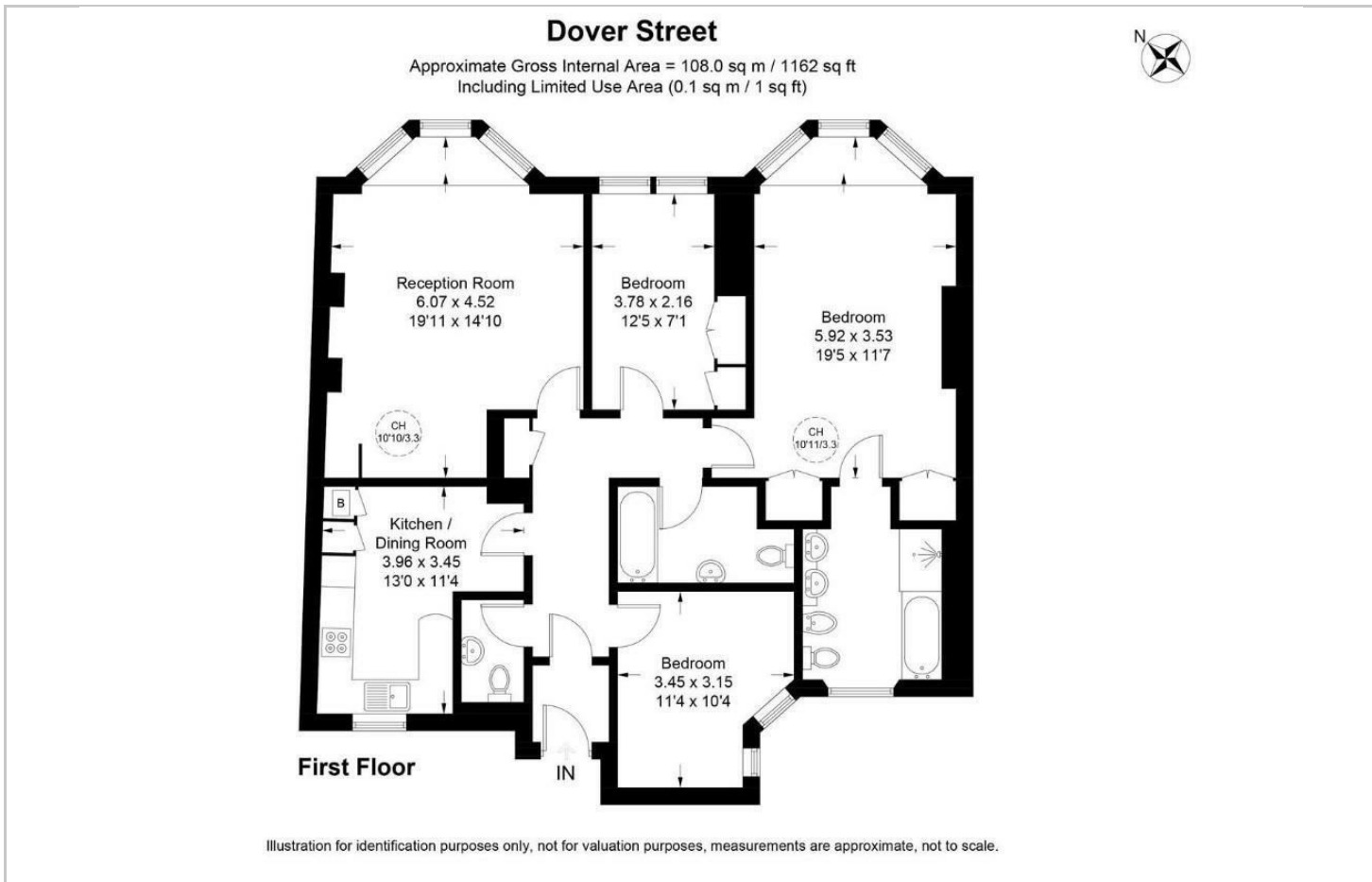
Available now

- Three Bedrooms
- Concierge
- Bay Windows
- Large Reception
- First Floor
- Available now

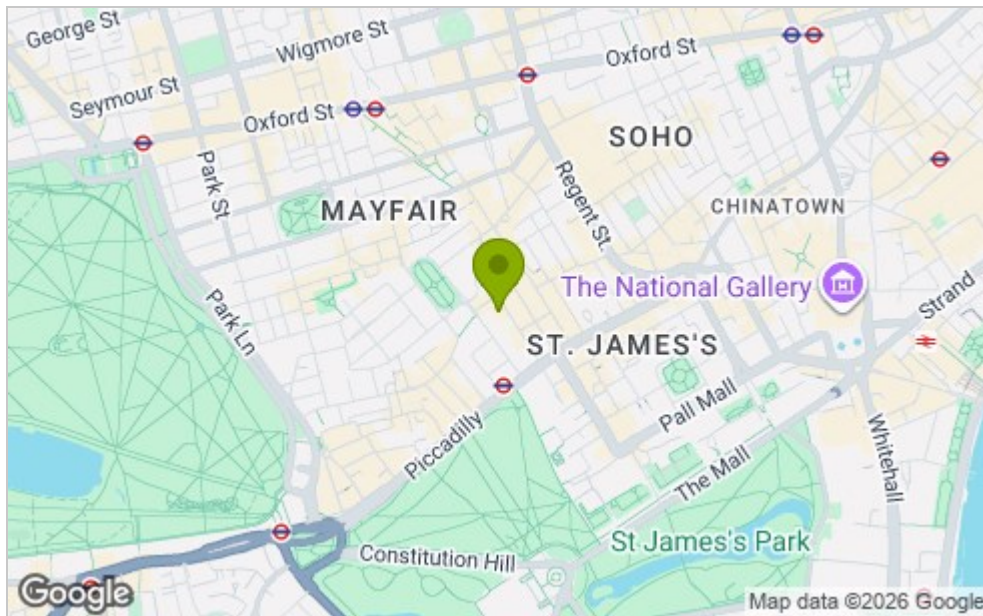




Floor Plan



Area Map



Viewing

Please contact our Chatterton Rees Office on 020 3780 0580 if you wish to arrange a viewing appointment for this property or require further information.

These particulars, whilst believed to be accurate are set out as a general outline only for guidance and do not constitute any part of an offer or contract. Intending purchasers should not rely on them as statements of representation of fact, but must satisfy themselves by inspection or otherwise as to their accuracy. No person in this firm's employment has the authority to make or give any representation or warranty in respect of the property.

Energy Efficiency Graph

