



# PETERSFIELD AVENUE SLOUGH, SL2 5BN

# £345,000

A beautifully presented two-bedroom luxury apartment situated on the fifth floor of the highly sought-after Iron House development on Petersfield Avenue, Slough.

This contemporary apartment offers spacious and stylish accommodation, featuring a private balcony with attractive landscaped views, double-glazed



---

  1  1

 2 **EPC C**

---

windows, and the benefit of secure underground parking. Combining modern design with character and charm, the property is ideal for professionals, first-time buyers, and investors alike.

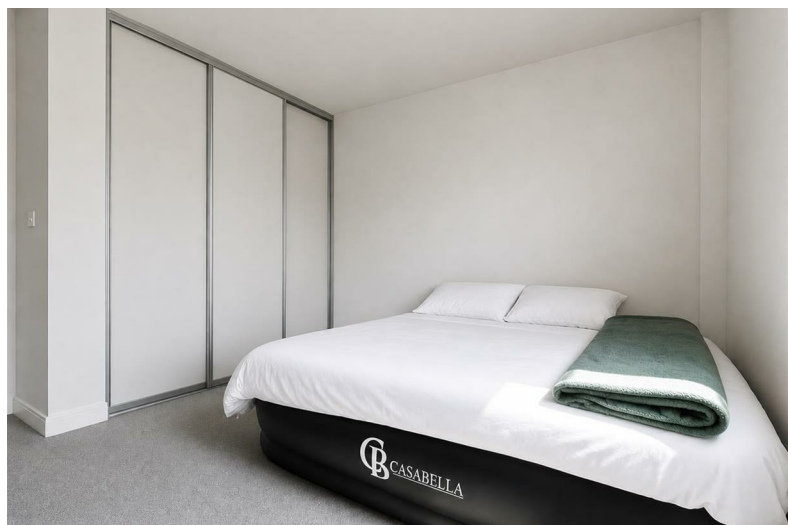
Iron House forms part of The Metalworks, an exclusive gated development comprising 65 luxury apartments. Residents enjoy the security and privacy of a well-maintained community environment, together with excellent amenities and outstanding transport connections.

Ideally located just a short walk from Slough Railway Station and the Elizabeth Line (Crossrail), the property provides fast and convenient access to Central London, Heathrow Airport, and other key destinations across the UK. The development's exceptional connectivity and prime location continue to make it a popular choice for commuters and investors.

The property benefits from a long lease and offers an excellent opportunity to acquire a quality apartment within one of Slough's most desirable residential developments.

Ideal for owner-occupiers and investors

- Two-bedroom luxury apartment
- Fifth-floor position
- Private balcony
- Landscaped views
- Double glazing throughout
- Secure underground parking
- Exclusive gated development
- Long lease
- Excellent transport links
- Walking distance to Slough Station and Elizabeth Line



411 Bath Road, Slough, SL1 5QL  
t: 01628 667442  
e: sales@cameronking.co.uk

