

EUGEN COTORANU

Personal Estate Agent
exp

Navigation House, Byron Road, Addlestone

Guide Price £210,000

🛏 1 🚗 1 🚗 1



You're going to like this one...

A spacious 1-bedroom apartment with private balcony, allocated parking and excellent links into London Waterloo, set in a peaceful yet well-connected location near Addlestone.

SELL | BUY | LET | INVEST
07774807085 | eugen.cotoranu@exp.uk.com

EUGEN COTORANU

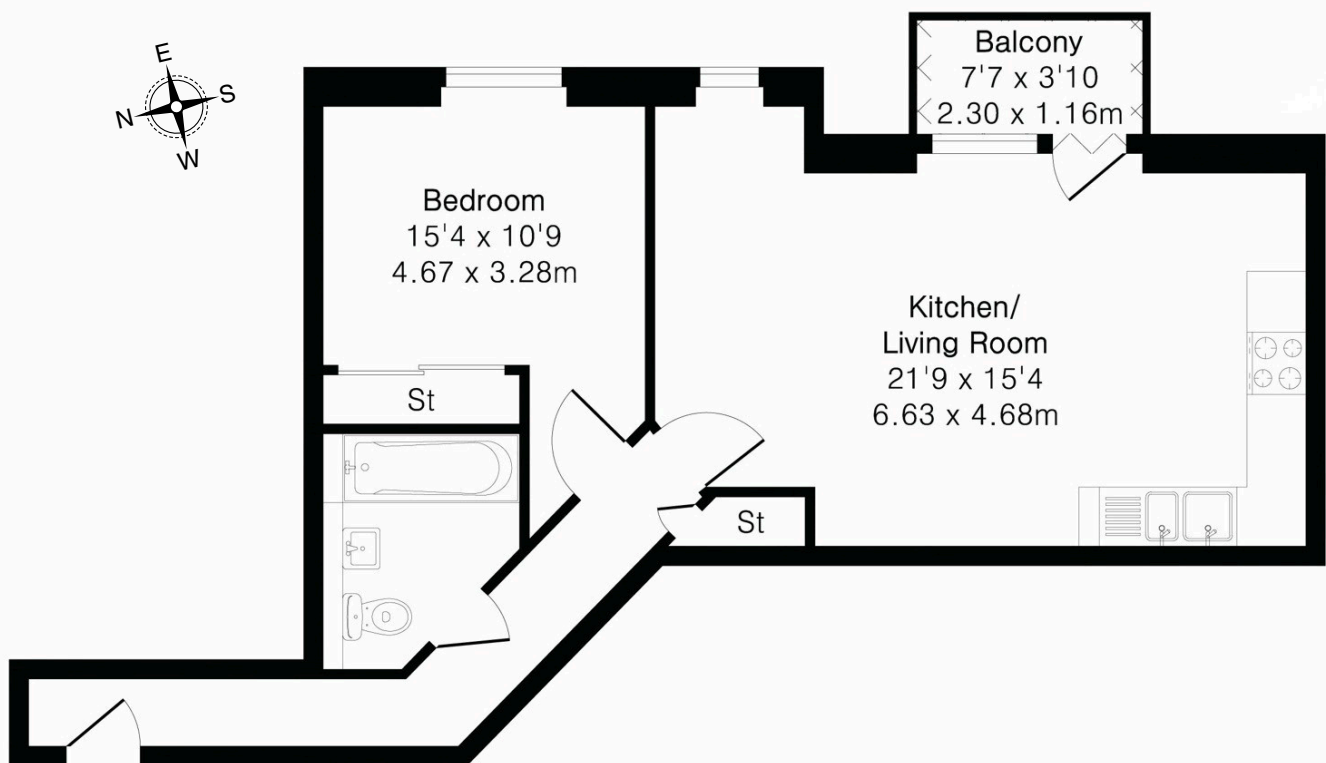
Personal Estate Agent

exp

- Please Quote EC0801
- Guide Price: £210,000-£220,000
- Built in 2008 (modern development)
- Close to River Wey
- 10-minute walk to Addlestone town centre
- 10-minute walk to Addlestone station
- Approx. 45 minutes to London Waterloo
- Ideal first home or investment
- Private balcony | Allocated parking
- Chain-Free | Sold with Vacant Possession

NAVIGATION HOUSE

Approximate Gross Internal Area 541 sq ft - 50 sq m



First Floor

FOR IDENTIFICATION PURPOSES ONLY, NOT TO SCALE

SELL | BUY | LET | INVEST

07774807085 | eugen.cotoranu@exp.uk.com