

Seaton Carew, County Durham, TS25



Price as listed



This pre-owned Kingswood (40'x20') park home is perfect for those looking for a detached, easy to maintain, bungalow-style property. It is in pristine condition as it is only 4 years old. The home has a spacious kitchen with integrated appliances, dining area and comfortable living room with an electric fireplace and large windows. There are two double bedrooms, an en suite and a bathroom. The exterior has a parking space and wrap around garden.

This park is brilliantly located in the quaint seaside village of Seaton Carew. Situated at the end of an established residential road, standing at the park entrance you look down this road and you can see the sea. Seaton Carew is a seaside resort two miles from Hartlepool. As a Blue Flag beach, Seaton Carew features many attractions, from its golden-sand beaches to its fabulous 3-mile-long promenade to its high street and nature reserve.

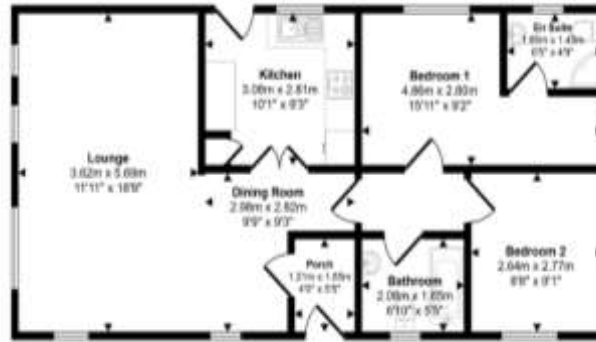
Age restriction: Over 50s

Site fees (at time of listing): £192.53 per month

Residential license

### Key Features

- Community Living
- Established Park
- Garden space
- Modern design
- Over 50s
- Part Exchange Available
- Pre-owned park home
- Residential Development
- Two Bedrooms
- Well maintained home



### House to sell?

Hassle-free Property Part-Exchange is available from Quickmove Properties, with no estate agent fees, no solicitor's fees and no market uncertainty.

### CONTACT US

01793 840917

advice@quickmoveproperties.co.uk

