



PRAIRIE STREET, SW8

£550,000

- Victorian
- Two bedrooms
- Private garden
- Share of freehold
- Well presented
- Energy rating: C





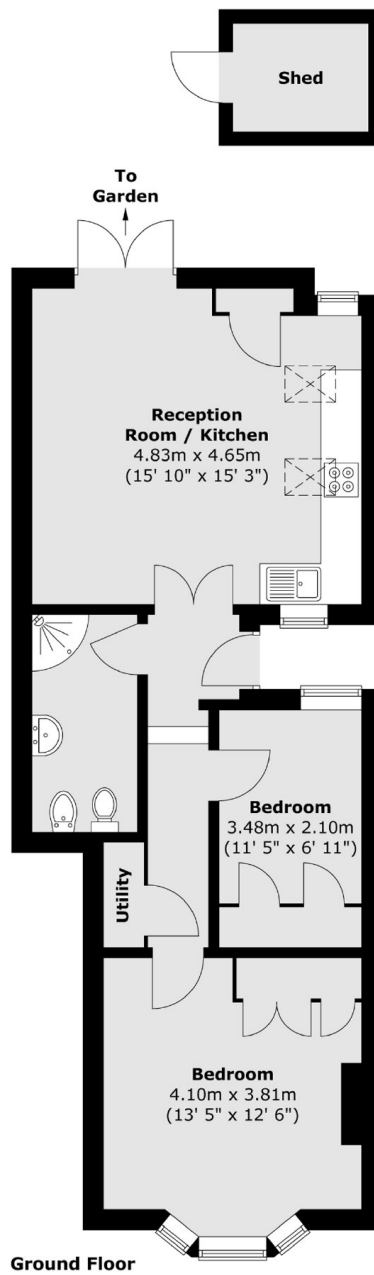
ABOUT THE HOME

A superb example of a two double bedroom Victorian ground floor maisonette with a private garden, located in the ever popular Diamond Conservation area just off of Queenstown Road.

Located in the highly sought after Queenstown Diamond Conservation Area, the property sits between Clapham Common and Battersea Park. Transport links are excellent with the Battersea Power Station development and its Underground station (Northern line) nearby, offering 15 minutes journey time to the City and West End. Other options include Queenstown Road (SWT to Waterloo), Battersea Park (Southern to Victoria), Wandsworth Road (Overground) and Clapham Junction (SWT, Southern and Overground).







Total area (approx.) : 57.8 sq. m (622 sq. ft)

JACKSONS CLAPHAM

73 Abbeville Road, London,
SW4 9JN
Sales: 020 8487 3177
Lettings: 020 8487 3178

Energy Rating: C We aim to make our particulars both accurate and reliable. However they are not guaranteed; nor do they form part of an offer or contract. If you require clarification on any points then please contact us, especially if you're traveling some distance to view. Please note that appliances and heating systems have not been tested and therefore no warranties can be given as to their good working order.