



Crews Street, E14

£576 Per week

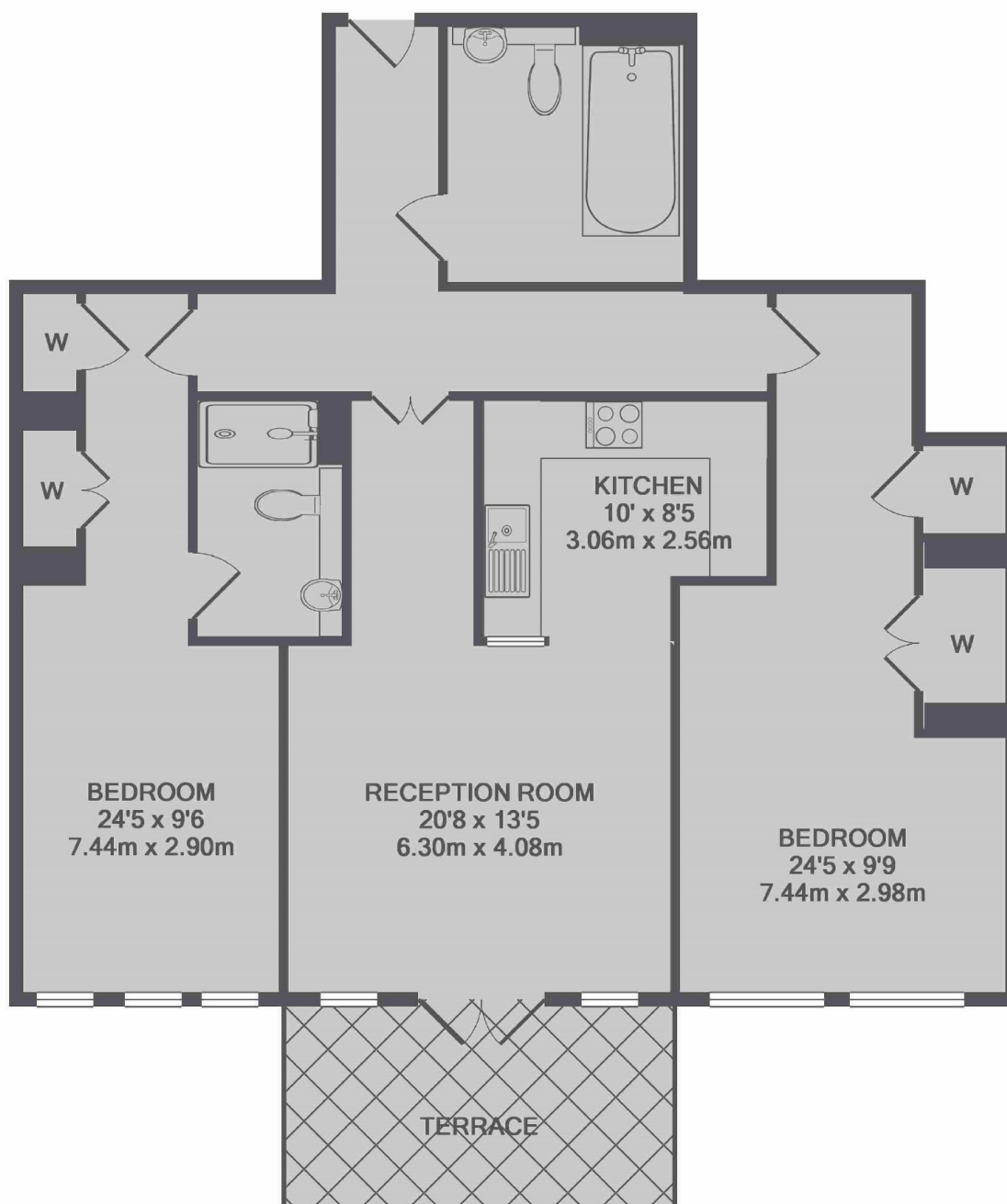
A spacious two bedroom apartment on the ground floor of this modern riverside development. This bright apartment has an open plan reception room, wooden flooring and a private terrace.

Crews Street is within walking distance of Mudchute DLR providing direct links to Central London and City Airport.

Features

- Two Bedrooms
- Two Bathrooms
- Ground Floor
- Private Patio
- Concierge
- Residents Gym

Crews Street, London, E14



TOTAL APPROX. FLOOR AREA 912 SQ.FT. (84.7 SQ.M.)