



Price
£150,000

Leasehold

3x  1x  1x 

**Carpenters Close,
Barming, Maidstone,
Kent, ME16**

cubitt & west
Helping you move forwards



Main features

- Large entrance hall
- Separate fitted kitchen
- Downstairs W/C
- Open-plan dining and lounge area
- Two double bedrooms on the first floor
- Modern family bathroom
- Private rear garden
- Allocated parking space
- Additional visitor parking bays

Accommodation

GROUND FLOOR

Dining/ Lounge: 14'8 x 10'11 (4.47m x 3.33m)

Kitchen : 9'8 x 8'11 (2.95m x 2.72m)

WC: 6'1 x 4'6 (1.86m x 1.37m)

FIRST FLOOR

Bedroom 2: 14'8 x 8'7 (4.47m x 2.62m)

Bedroom 3 : 9'8 x 7'4 (2.95m x 2.24m)

Bathroom: 7'4 x 6'10 (2.24m x 2.08m)

SECOND FLOOR

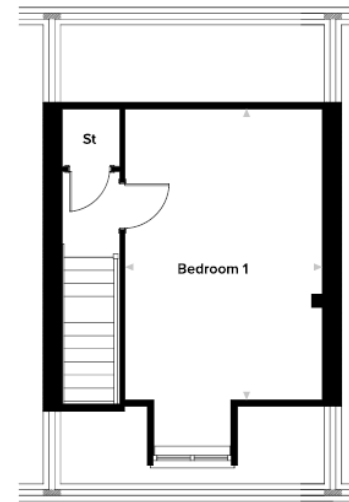
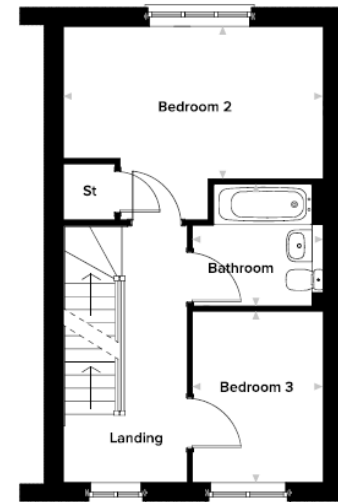
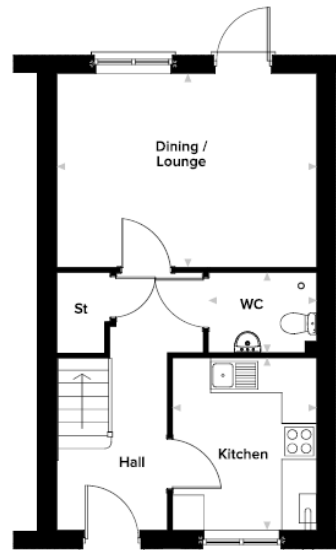
Bedroom 1 : 16'5 x 11'2 (5.01m x 3.41m)

OUTSIDE

Rear Garden

Allocated Parking

Visitor Space



Call Shared Ownership - 01403 602681 ■ cubittandwest.co.uk

■ Legal advice should be taken to verify fixtures/fittings, planning, alterations and/or lease details

■ Appliances & services are untested, dimensions are approximate and floor plans are not to scale



2430024V/20260106/KCE/KCE