



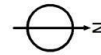
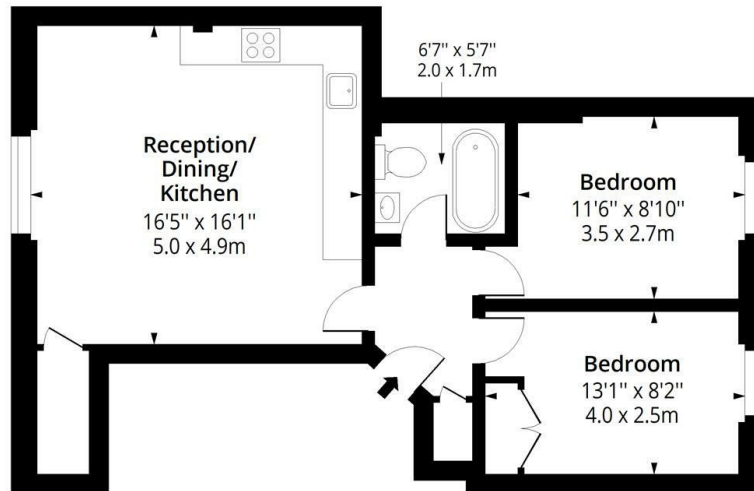
Westbourne Grove, London, W2 4UW

£2,600 Per month

- Two double bedrooms
- Prime Westbourne Grove location
- Spacious open plan reception and kitchen
- Excellent transport connections throughout London
- Excellent natural light

Westbourne Grove W2

Approx. Gross Internal Area 603 Sq Ft - 56.02 Sq M



Fourth Floor

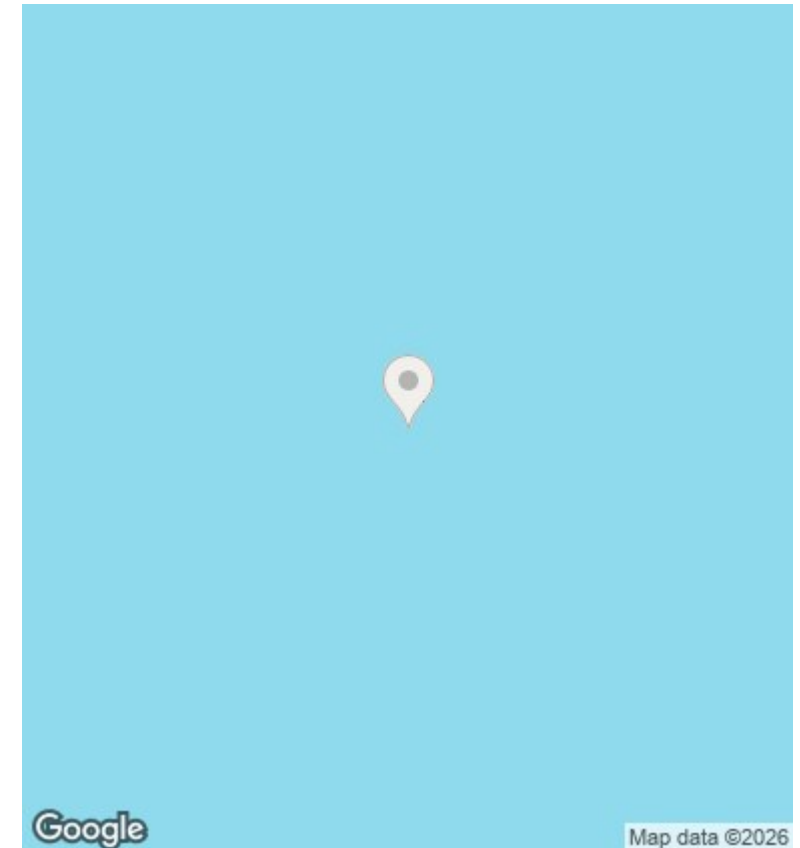
Floor Area 603 Sq Ft - 56.02 Sq M



Measured according to RICS IPMS2. Floor plan is for illustrative purposes only and is not to scale. Every attempt has been made to ensure the accuracy of the floor plan shown, however all measurements, fixtures, fittings and data shown are an approximate interpretation for illustrative purposes only. 1 sq m = 10.76 sq feet.

ipaplus.com

Date: 5/6/2026



Google

Map data ©2026

Directions

Viewings

Viewings by arrangement only. Call 0208 075 4927 to make an appointment.

Council Tax Band

D

EPC Rating:

D

Energy Efficiency Rating		Current	Potential
Very energy efficient - lower running costs			
(92 plus) A			
(81-91) B			
(69-80) C			76
(55-68) D		55	
(39-54) E			
(21-38) F			
(1-20) G			
Not energy efficient - higher running costs			
England & Wales		EU Directive 2002/91/EC	