



Morgans Terrace

£120,000

- No On Going Chain
- Jaw Dropping Views
- Ideal Investment
- Opportunity To Improve!
- Sought After, Semi-Rural Location
- EPC Rating: Awaited



 3  1  2

 peter
alan

01639 635115
neath@peteralan.co.uk



About the property

Available for sale with no on-going chain is this three story, family home or investment within Pontrhydyfen! Offering an excellent opportunity for buyers seeking a home they can truly make their own. With great links to amenities including high street stores, bars and restaurants within Neath and Port Talbot town centres alongside renowned schools from primary to College! This semi-detached home is approached via a hard-standing, for the luxury of off-street parking, to the front. With side access available through to an enclosed rear garden! Internally, the property flows through three-story living from three bedrooms and a bathroom to the first floor, a modern fitted kitchen and sitting room to the ground floor and utility space and a further two reception rooms on the lower ground floor! Internal viewings are highly recommended to truly appreciate this lovely home!

Accommodation

Entrance Hallway

Lounge

14' 4" x 10' 3" (4.37m x 3.12m)

Ground Floor

Kitchen

12' 7" x 11' 2" (3.84m x 3.40m)

Ground Floor

First Floor Landing



Bedroom One

11' 7" Max x 9' 4" (3.53m Max x 2.84m)

Bedroom Two

10' 1" x 9' 3" (3.07m x 2.82m)

Bedroom Three

10' 1" x 8' 7" (3.07m x 2.62m)

Bathroom

Lower Ground Floor:

Lounge

15' 1" x 11' 1" (4.60m x 3.38m)

Utility Room

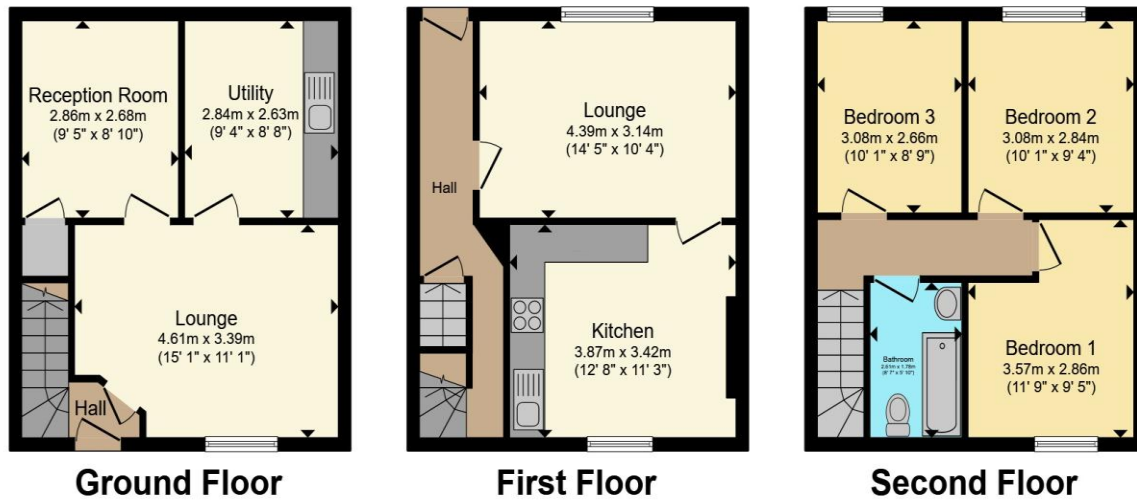
9' 3" x 8' 6" (2.82m x 2.59m)

Reception Room

9' 4" x 8' 8" (2.84m x 2.64m)

Front & Rear Gardens

Floorplan



Total floor area 107.6 m² (1,158 sq.ft.) approx

This floor plan is for illustrative purposes only. It is not drawn to scale. Any measurements, floor areas (including any total floor area), openings and orientation are approximate. No details are guaranteed, they cannot be relied upon for any purpose and they do not form part of any agreement. No liability is taken for any error, omission or misstatement. A party must rely upon its own inspection(s). Powered by www.propertybox.io



Important Information

Note while we endeavour to make our sales details accurate and reliable, if there is any point which is of particular interest to you, please contact the office and we will be pleased to confirm the position for you. We have not personally tested any apparatus, equipment, fixtures, fittings or services and cannot verify they are in working order or fit for their purposes. Nothing in these particulars is intended to indicate that carpets or curtains, furnishings or fittings, electrical goods (whether wired or not). Gas fires or light fittings or any other fixtures not expressly included form part of the property offered for sale. This computer generated Floorplan, if applicable, is intended as a general guide to the layout and design of the property. It is not to scale and should not be relied upon for dimensions. Tenure: We cannot confirm the tenure of the property as we have not had access to the legal documents. The buyer is advised to obtain verification from their solicitor or surveyor.

Peter Alan Limited is registered in England and Wales under company number 2073153, Registered Office is Cumbria House, 16-20 Hockliffe Street, Leighton Buzzard, Bedfordshire, LU7 1GN. VAT Registration Number is 500 2481 05. For activities relating to regulated mortgages and non-investment insurance contracts, Peter Alan Limited is an appointed representative of Connells Limited which is authorised and regulated by the Financial Conduct Authority. Connells Limited's Financial Services Register number is 302221. Most buy-to-let