



OVER 60?

Secure this property
for up to **59% less!**

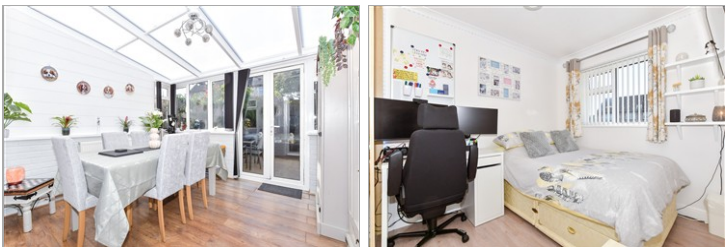
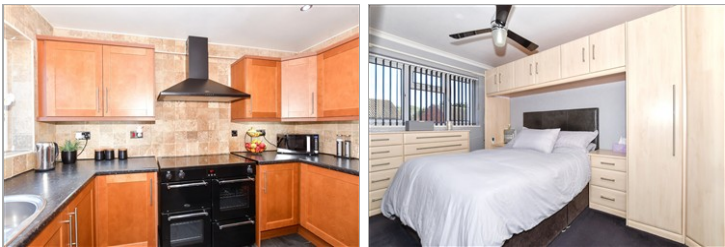
Guide Price
£350,000

Freehold

3x  1x  1x 

**Townsend Road,
Snodland, Kent, ME6**

Wards
Helping you move forwards



Main features

- Great size family home in a lovely desirable location
- No stress parking here with a driveway, carport and garage
- Excellent size kitchen, perfect for making family dinners together
- Ready to move straight into
- Pretty low maintenance garden plus utility area to the back of the garage

Accommodation

GROUND FLOOR

Entrance Hall

Kitchen: 10'9 x 8'0 (3.28m x 2.44m)

Lounge/Diner: 14'5 x 13'7 (4.40m x 4.14m)

Conservatory: 11'9 x 10'8 (3.58m x 3.25m)

FIRST FLOOR

Landing

Bedroom 1: 12'2 x 8'1 (3.71m x 2.47m)

Bedroom 2: 10'5 x 7'10 (3.18m x 2.39m)

Bedroom 3: 7'6 x 6'3 (2.29m x 1.91m)

Shower Room

OUTSIDE

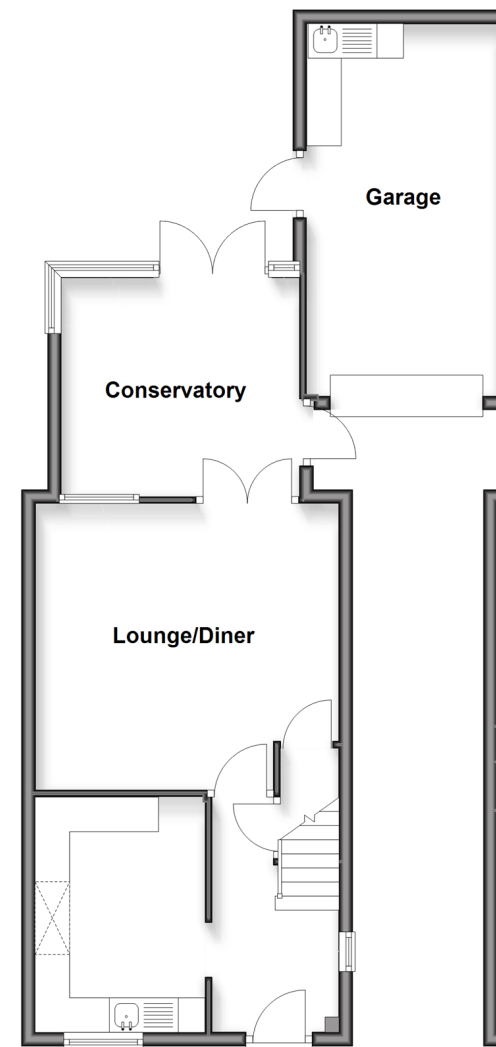
Garage with Utility Area

Carport and Driveway

Rear Garden

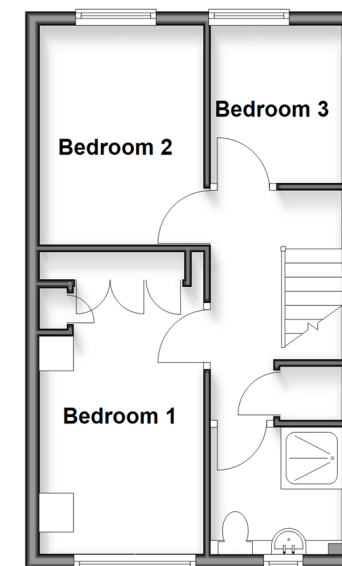
Ground Floor

Approx. 60.6 sq. metres (652.0 sq. feet)



First Floor

Approx. 33.6 sq. metres (362.2 sq. feet)



Call Snodland - 01634 245055 ■ wardsofken.co.uk

- Legal advice should be taken to verify fixtures/fittings, planning, alterations and/or lease details
- Appliances & services are untested, dimensions are approximate and floor plans are not to scale
- Through a Homewise Home For Life Plan people aged 60+ can secure this property for up to 50% less, by purchasing a Lifetime Lease.



13821663/20251105/CG/LK