



Charleville Road, W14

£465,000

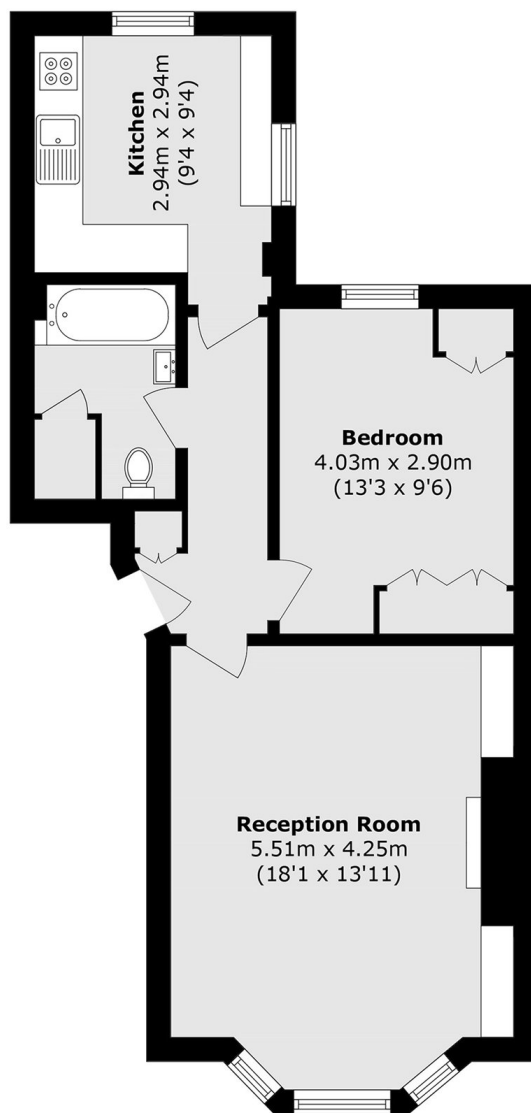
A large one bedroom apartment situated on the raised ground floor with a share of the freehold. The property has a spacious living room with high ceilings, a bay window and period features. You have one double bedroom with storage and a separate kitchen.

Charleville Road is a popular, sought after residential area within four hundred yards to either Barons Court or West Kensington underground stations, local shops and the A4 for easy access into and out of Central London.

Features

- No Onward Chain
- One Bedroom
- Share Of Freehold
- Excellent Location
- Raised Ground Floor
- Spacious

Charleville Road, London, W14



Ground Floor

Total area (approx.): 54.3 sq. m (584.4 sq. ft)