



Upper Weston, Bath

£495,000

Well Appointed, Extended 1950's Semi. Three Bedrooms. EPC Grade C



21 Greenacres
Bath
BA1 4NR

PRICE: £495,000

A stylish, extended and beautifully appointed 1950's semi detached house which has been transformed by the present owners. Nestled in the sought after area of Upper Weston with excellent local schools and facilities within Weston Village, this is a fine family home. Hall, open plan living/dining room with a woodburning stove. Extended open plan kitchen/breakfast room with integrated appliances. Upstairs there are three bedrooms and a large bathroom suite. Outside to the front is parking for two cars, side access, extensive tiered rear garden with a large patio and seating area with various levels up. Lovely views complete the picture. Priced to sell.

Three Bedroom 1950's Semi

Updated Throughout

Living/ Dining Room

Extended Kitchen

Bathroom Suite

Gas Central Heating

Freehold

977 Sq Ft (90.8 Sq Mt)

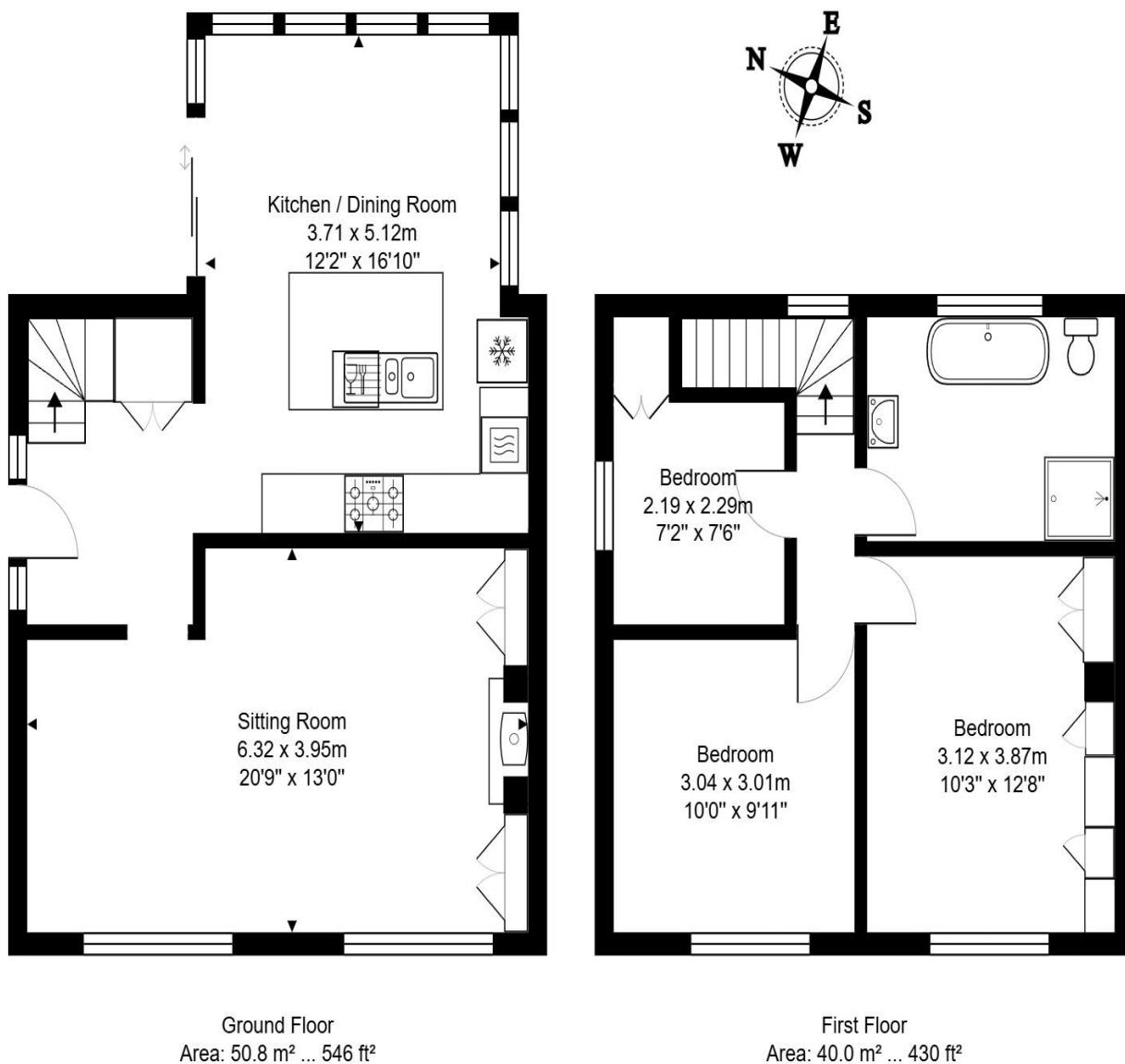
Council Tax Band D £2266

Parking

Large Rear Garden Over Levels



21 Greenacres



Total Area: 90.8 m² ... 977 ft²

All measurements of walls, doors, windows, fittings and appliances, their size and locations are approximate and cannot be regarded as being an accurate representation neither by the vendor nor their agent.
www.inovusproperty.co.uk

Kit Johnson Residential
26-33 High St
Weston
Bath
BA1 4BX
01225 444447
sales@kitjohnson.co.uk
www.kitjohnson.co.uk