



Hafod Road, offers in the region of £325,000

- Detached
- Bungalow
- Sought after location
- Driveway & Garage
- Gardens
- Level plot
- No onward chain
- EPC Rating: Awaited



 2  1  1



About the property

Superb opportunity to acquire this well-positioned two-bedroom detached bungalow, situated within a highly sought-after residential location in the desirable village of Ponthir.

The accommodation briefly comprises an entrance hall, spacious lounge, kitchen/dining room, shower room, separate WC, and two well-proportioned bedrooms.

Externally, the property benefits from a front garden with driveway providing off-road parking and access to the garage. To the rear is an enclosed and level garden, ideal for relaxing or entertaining.

Ponthir is a charming village renowned for its strong sense of community, while the nearby towns of Cwmbran and Newport offer an extensive range of shops, cafés, and everyday amenities. The historic Roman village of Caerleon is also within easy reach and is particularly well regarded for its excellent selection of pubs, restaurants, and cafés, making this an especially desirable location.

The property is offered to the market with no onward chain, making it an ideal purchase for those seeking a smooth and straightforward move.

Early viewing is highly recommended.



Accommodation

Hallway

Lounge

16' 7" x 12' 9" (5.05m x 3.89m)

Kitchen/Dining Room

15' 3" max x 11' 2" (4.65m max x 3.40m)

Shower Room

Bedroom One

12' 4" x 10' 8" (3.76m x 3.25m)

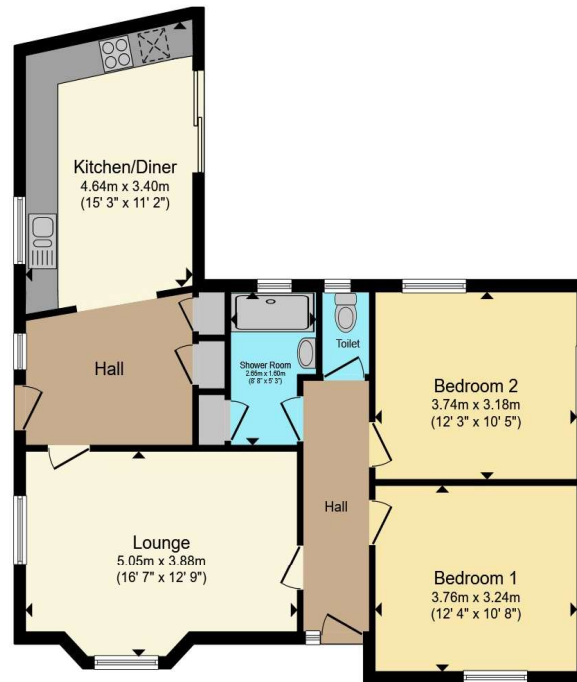
Bedroom Two

Outside

01633 221892

newport@peteralan.co.uk

Floorplan



Total floor area 77.6 m² (835 sq.ft.) approx

This floor plan is for illustrative purposes only. It is not drawn to scale. Any measurements, floor areas (including any total floor area), openings and orientation are approximate. No details are guaranteed, they cannot be relied upon for any purpose and they do not form part of any agreement. No liability is taken for any error, omission or misstatement. A party must rely upon its own inspection(s). Powered by www.propertybox.io



Important Information

Note while we endeavour to make our sales details accurate and reliable, if there is any point which is of particular interest to you, please contact the office and we will be pleased to confirm the position for you. We have not personally tested any apparatus, equipment, fixtures, fittings or services and cannot verify they are in working order or fit for their purposes. Nothing in these particulars is intended to indicate that carpets or curtains, furnishings or fittings, electrical goods (whether wired or not). Gas fires or light fittings or any other fixtures not expressly included form part of the property offered for sale. This computer generated Floorplan, if applicable, is intended as a general guide to the layout and design of the property. It is not to scale and should not be relied upon for dimensions. Tenure: We cannot confirm the tenure of the property as we have not had access to the legal documents. The buyer is advised to obtain verification from their solicitor or surveyor.

Peter Alan Limited is registered in England and Wales under company number 2073153, Registered Office is Cumbria House, 16-20 Hockliffe Street, Leighton Buzzard, Bedfordshire, LU7 1GN. VAT Registration Number is 500 2481 05. For activities relating to regulated mortgages and non-investment insurance contracts, Peter Alan Limited is an appointed representative of Connells Limited which is authorised and regulated by the Financial Conduct Authority. Connells Limited's Financial Services Register number is 302221. Most buy-to-let

