





S Stuart
Rusht
Estate Agents



S Stuart
Rusht
Estate Agents



S Stuart
Rusht
Estate Agents



S Stuart
Rusht
Estate Agents

Boundary Farm Whisterfield Lane

Siddington, Macclesfield

Three-bedroom detached cottage on one acre plot with large agricultural shed and annexe. Rural, peaceful setting with lake views. Scope to extend, modernise, or redevelop (subject to planning). Council Tax band: TBD

Tenure: Freehold

EPC Energy Efficiency Rating: F

EPC Environmental Impact Rating: F

- Wonderful development opportunity
- Detached cottage, annex building and large agricultural shed standing in 1 acre plot
- Superb rural location within convenient reach of Knutsford, Alderley Edge, Wilmslow and Macclesfield
- Views over Acre Nook Lake



Boundary Farm, Whisterfield Lane, Siddington

Main House internal area 1,557 sq ft (145 sq m)

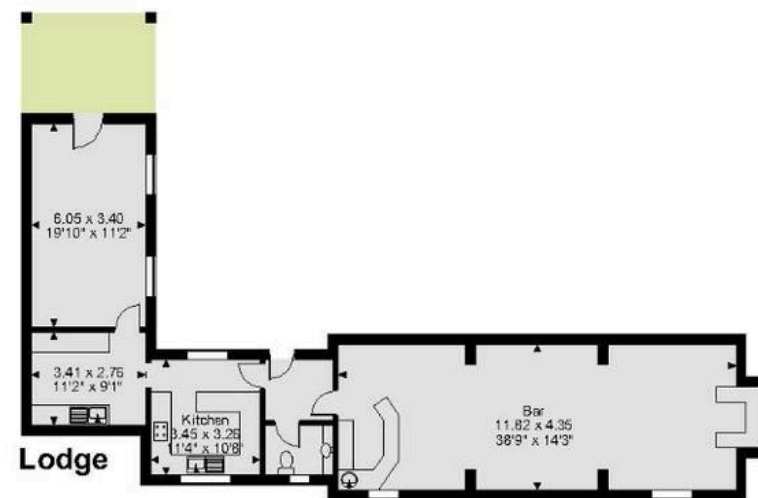
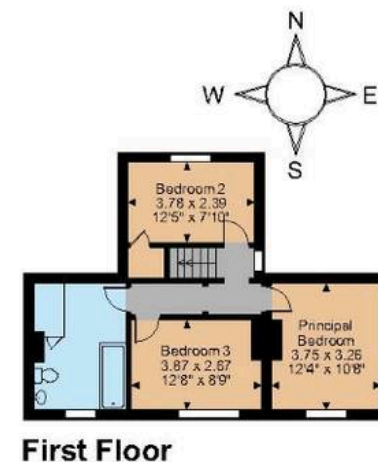
Lodge internal area 1,106 sq ft (103 sq m)

External Rooms internal area 1,064 sq ft (99 sq m)

Barn internal area 5,970 sq ft (555 sq m)



Barn



FOR ILLUSTRATIVE PURPOSES ONLY - NOT TO SCALE

The position & size of doors, windows, appliances and other features are approximate only.

© ehouse. Unauthorised reproduction prohibited. Drawing ref. dig/8553455/NGS



Stuart Rushton & Company

Stuart Rushton & Co, 35 King Street – WA16 6DW

01565 757000

enquiries@srushton.co.uk

www.srushton.co.uk



We are not authorised to make or give any representations or warranties in relation to the property either here or elsewhere. We assume no responsibility for any statement that may be made in these particulars, and they do not form part of any offer or contract and must not be relied upon as statements or representation of fact. Any areas, measurements or distances are approximate. The text, photographs and plans are for guidance only. Importantly, it should not be assumed that the property has all necessary planning, building regulations or other consents and we have not tested any services, equipment or facilities. Purchasers must satisfy themselves by inspection or otherwise.