



# 11/12 Russell Gardens

Roseburn, Edinburgh, EH12 5PG



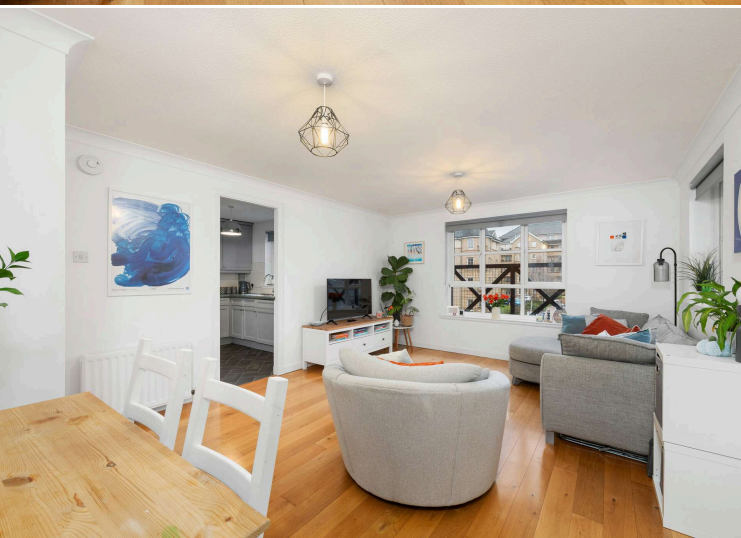
VMH ESTATE AGENTS





## Bright second-floor flat set in a modern, peaceful development.

- Spacious sitting/dining room
- Fitted kitchen
- Double bedroom 1 - built-in wardrobes
- Three piece bathroom
- Light neutral decor
- Sought-after location
- Secure entryphone system
- Well kept communal grounds
- Resident's parking
- Gas central heating & double glazing



**Offers Over: £190,000**

**EPC Rating: C**

**Council Tax: D**

**Tenure: Freehold**

Further information can be found in the home report.

**vmh.co.uk**



# About the Property

Located in the highly sought-after residential area of Roseburn, this attractive second-floor flat forms part of a well-regarded modern development close to local amenities and excellent transport links into the city centre.

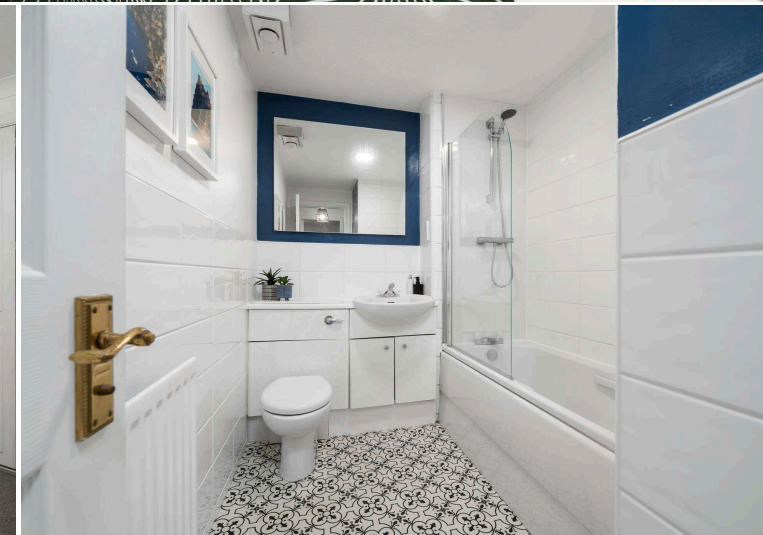
The accommodation is bright, well-proportioned and thoughtfully laid out, offering spacious living throughout and presented in excellent order. This property represents a fantastic opportunity for a range of buyers looking for a comfortable and convenient home in a desirable location.

## Management

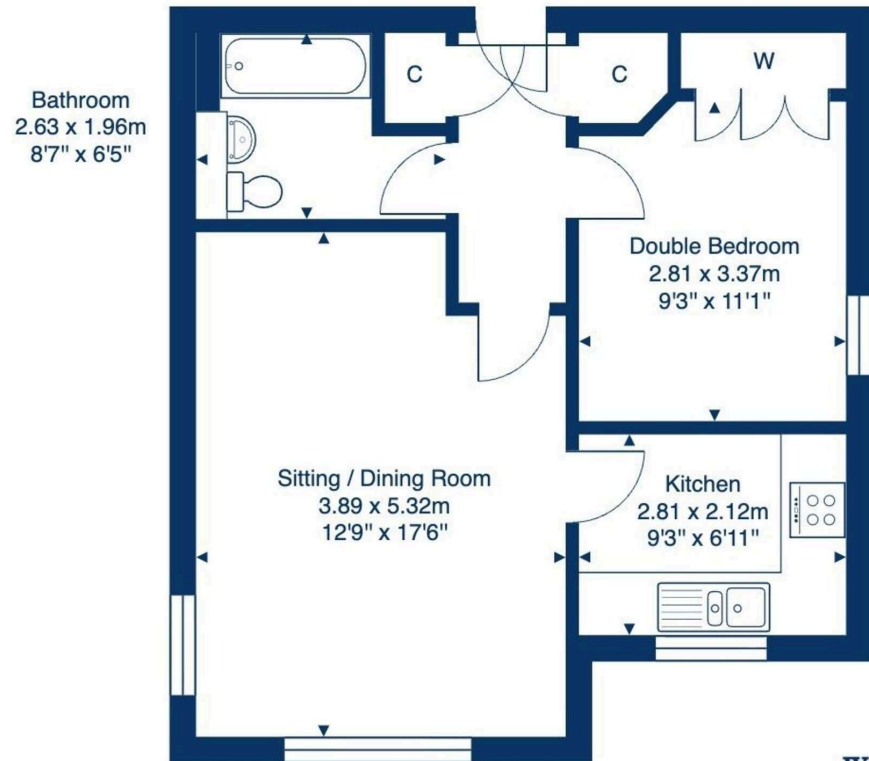
The development is factored and maintained by James Gibb for a monthly cost of approximately £85.00 which includes block buildings insurance.

## Extras

To include all fitted carpets and fitted floor coverings, blinds, curtains, light fittings, hob, oven, cooker hood, fridge with small freezer compartment and washing machine.



## 11/12 Russell Gardens, Edinburgh, EH12 5PG



Second Floor

Total Area: 47.7 m<sup>2</sup> ... 513 ft<sup>2</sup>

All measurements are approximate and for display purposes only.

## Location

The Roseburn area is situated within a 5 minute drive of the city centre and offers residents a wide range of local amenities including convenience stores, restaurants, bars, larger shopping facilities can be found at Craighleith Retail Park. For the sports enthusiast there are golf courses at both Ravelston and Murrayfield, tennis courts and access to walks along the Water of Leith. For rugby followers the renowned Murrayfield Stadium is within walking distance. The area is well placed for ease of access to the City Bypass, Edinburgh International Airport and all central Scotland's motorway links. There are numerous regular bus services which operate to and from the city centre and a tram stop adjacent to Murrayfield Stadium.







VMH ESTATE AGENTS



VMH SOLICITORS

*More* is our middle name.

**Registered Office: 8 Sibbald Walk, Edinburgh, EH8 8FT**

**☎ 0131 622 2626**

**✉ [property@vmh.co.uk](mailto:property@vmh.co.uk)**

**🌐 [vmh.co.uk](http://vmh.co.uk)**

**📄 DX: 552210, Edinburgh 68**

The dimensions provided are for illustration purposes only; detailed measurements should be taken personally. No documentation will be exhibited in respect of the compliance or otherwise of replacement windows.  
Although every attempt has been taken to ensure accuracy, the details within the brochure are not guaranteed or warranted and will not form part of any future contract to buy.