

## 43, Thamesmead, Walton-On-Thames, KT12 2SH

Energy Efficiency Rating		Current	Potential
Very energy efficient - lower running costs			
(92 plus) <b>A</b>			
(81-91) <b>B</b>			
(69-80) <b>C</b>			
(55-68) <b>D</b>			
(39-54) <b>E</b>			
(21-38) <b>F</b>			
(1-20) <b>G</b>			
Not energy efficient - higher running costs			
<b>England &amp; Wales</b>	EU Directive 2002/91/EC		

Environmental Impact (CO <sub>2</sub> ) Rating		Current	Potential
Very environmentally friendly - lower CO <sub>2</sub> emissions			
(92 plus) <b>A</b>			
(81-91) <b>B</b>			
(69-80) <b>C</b>			
(55-68) <b>D</b>			
(39-54) <b>E</b>			
(21-38) <b>F</b>			
(1-20) <b>G</b>			
Not environmentally friendly - higher CO <sub>2</sub> emissions			
<b>England &amp; Wales</b>	EU Directive 2002/91/EC		



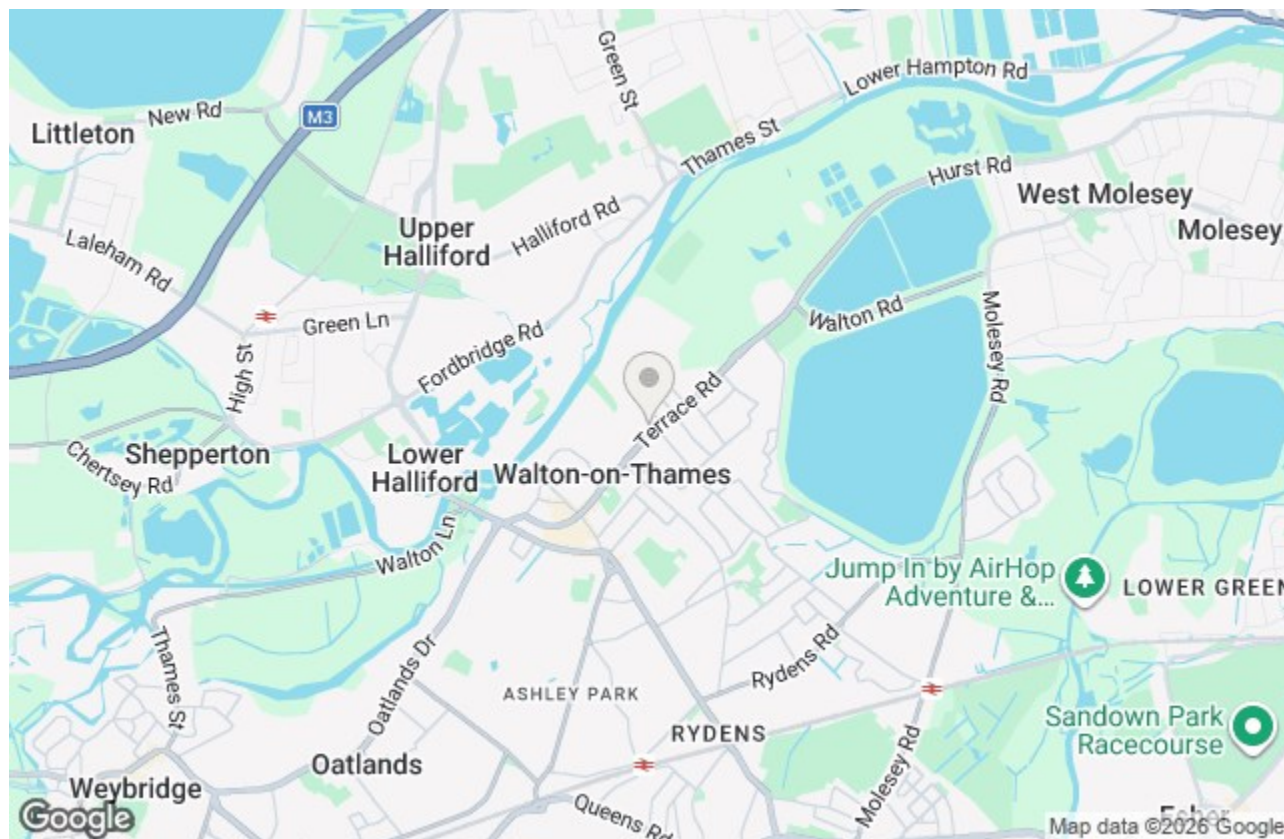
### £325,000 Leasehold

Conveniently located in the popular Thamesmead, Walton-On-Thames, this exceptionally spacious top floor apartment offers a delightful blend of comfort and convenience. With two generous double bedrooms, one of which boasts extensive built-in storage, this flat is perfect for those seeking both space and practicality.

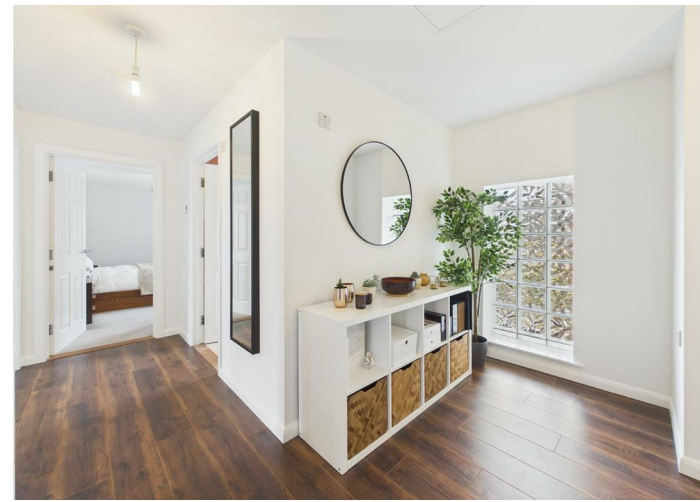
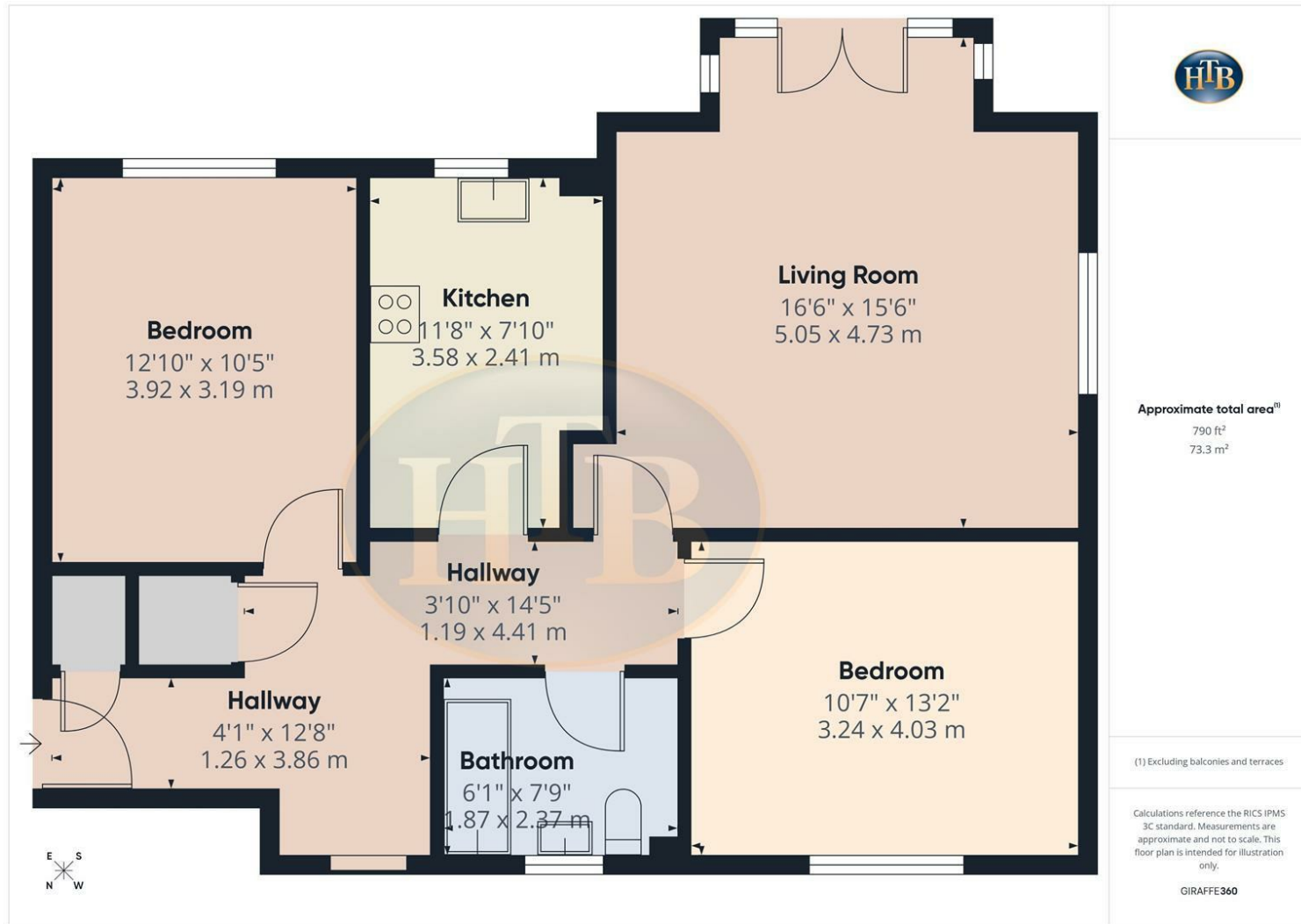
The large double aspect lounge and dining room is a standout feature, providing a bright and airy atmosphere that is ideal for both relaxation and entertaining. The nicely fitted kitchen offers a range of built-in appliances including oven & hob and fridge freezer along with space and plumbing for a full size dishwasher and washing machine. The re-fitted bathroom, complete with a shower over the bath, adds a modern touch to this lovely home.

Situated within easy reach of the picturesque River Thames and the vibrant Walton town centre, residents will enjoy a variety of local amenities, including shops, cafes, and recreational facilities with Excel leisure centre with outstanding gym and swimming pool just a short walk away. Additionally, the property benefits from an allocated parking space, ensuring that you have a secure place for your vehicle.

This purpose-built flat is an excellent opportunity for first-time buyers or those looking to downsize, offering a comfortable living space in a desirable location. Don't miss the chance to make this wonderful apartment your new home. Call 01932 22266

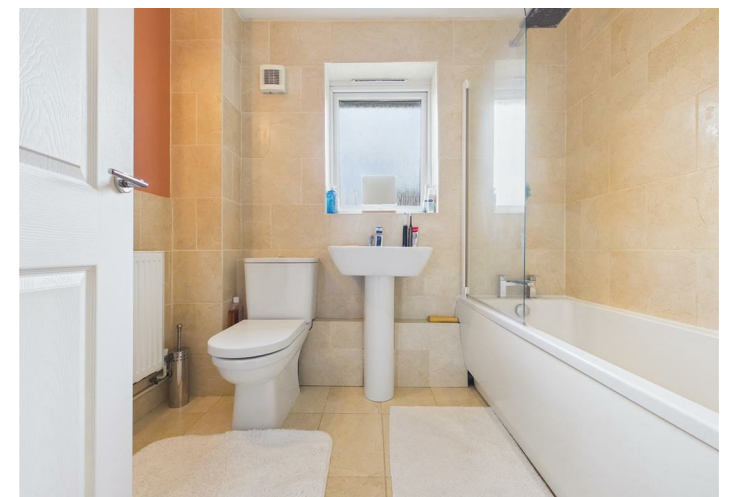


# Thamesmead, Walton-On-Thames, KT12 2SH



- SPACIOUS DOUBLE ASPECT LOUNGE/DINING ROOM WITH JULIET BALCONY
- TOP FLOOR APARTMENT
- ALLOCATED PARKING SPACE
- KITCHEN WITH BUILT-IN APPLIANCES
- ELMBRIDGE COUNCIL TAX BAND C

- TWO DOUBLE BEDROOMS
- SHORT WALK TO RIVER THAMES TOW PATH & TOWN CENTRE
- SECURITY ENTRYPHONE SYSTEM
- RE-FITTED BATHROOM WITH SHOWER OVER THE BATH



This plan is a representation of the property and measurements, where given, are approximate. None of the fixtures and fittings have been tested by us. These details are thought to be materially correct but we cannot guarantee there are no error and emissions and they do not form part of any contract