





Property Description

Welcome to this beautifully presented end-of-terrace home, part of the sought-after David Wilson Homes development, The Pavilions. Designed with modern living in mind, this property combines space, style, and convenience.

On the ground floor, the open-plan kitchen and dining area is the heart of the home, perfect for family meals or entertaining guests. The adjoining living room is filled with natural light and opens onto the garden, creating a seamless flow between indoor and outdoor living. A handy cloakroom completes this level.

Upstairs, the master bedroom features a sleek en-suite shower room, while the second double bedroom also benefits from its own en-suite. The third bedroom is impressively wide, offering flexibility as a guest room, twin setup, or home office. A modern family bathroom serves this floor.

Step outside to a private rear garden with a patio for summer dining and a lawn for children or pets to enjoy. Rear access leads to two dedicated parking spaces, ensuring convenience for busy households.

Entrance

Cloakroom

Lounge

17' 6" x 10' (5.33m x 3.05m)
Patio doors

Kitchen

10' 4" x 17' 5" (3.15m x 5.31m)
Double glazed window to the front aspect

Bedroom One

10' 3" x 18' 4" (3.12m x 5.59m)
Double glazed window to the rear aspect

En-Suite

Shower; wash hand basin; low level wc

Bedroom Two

7' x 21' (2.13m x 6.40m)
Two double glazed windows

Bedroom Three

10' 1" x 11' 9" (3.07m x 3.58m)
Double glazed window to the front

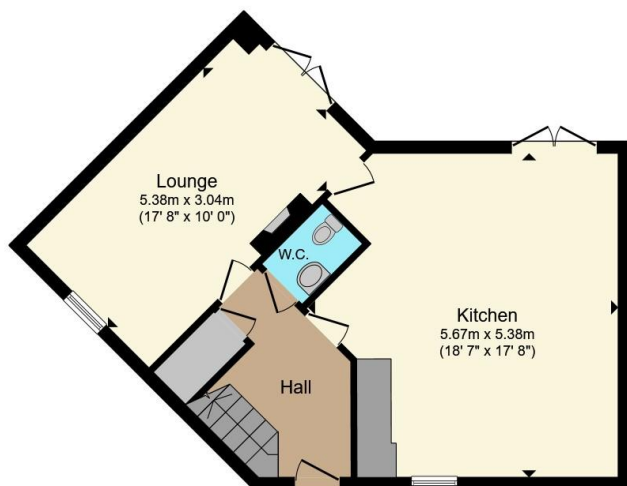
Ensuite

Shower room; wash hand basin; low level wc

KEY FEATURES

- Three generous sized bedrooms
- Spacious kitchen diner
- Generous sized lounge
- Cloakroom
- Two en suites
- Private rear garden
- Two allocated parking spaces
- Built by David Wilson Homes





Ground Floor



First Floor

Total floor area 107.6 m² (1,159 sq.ft.) approx

This floor plan is for illustrative purposes only. It is not drawn to scale. Any measurements, floor areas (including any total floor area), openings and orientation are approximate. No details are guaranteed, they cannot be relied upon for any purpose and they do not form part of any agreement. No liability is taken for any error, omission or misstatement. A party must rely upon its own inspection(s). Powered by www.propertybox.io

Connells

To view this property please contact Connells on

T 01295 268 101
E banbury@connells.co.uk

33 Bridge Street
 BANBURY OX16 5PN

EPC Rating: B Council Tax
 Band: D

view this property online connells.co.uk/Property/BAN309757

Tenure: Freehold



1. MONEY LAUNDERING REGULATIONS Intending purchasers will be asked to produce identification documentation at a later stage and we would ask for your co-operation in order that there will be no delay in agreeing the sale. 2. These particulars do not constitute part or all of an offer or contract. 3. The measurements indicated are supplied for guidance only and as such must be considered incorrect. Potential buyers are advised to recheck measurements before committing to any expense. 4. We have not tested any apparatus, equipment, fixtures, fittings or services and it is in the buyers interest to check the working condition of any appliances.

Connells Residential is registered in England and Wales under company number 1489613, Registered Office is Cumbria House, 16-20 Hockliffe Street, Leighton Buzzard, Bedfordshire, LU7 1GN. VAT Registration Number is 500 2481 05.

See all our properties at www.connells.co.uk | www.rightmove.co.uk | www.zoopla.co.uk

Property Ref: BAN309757 - 0003

