

abbotFox

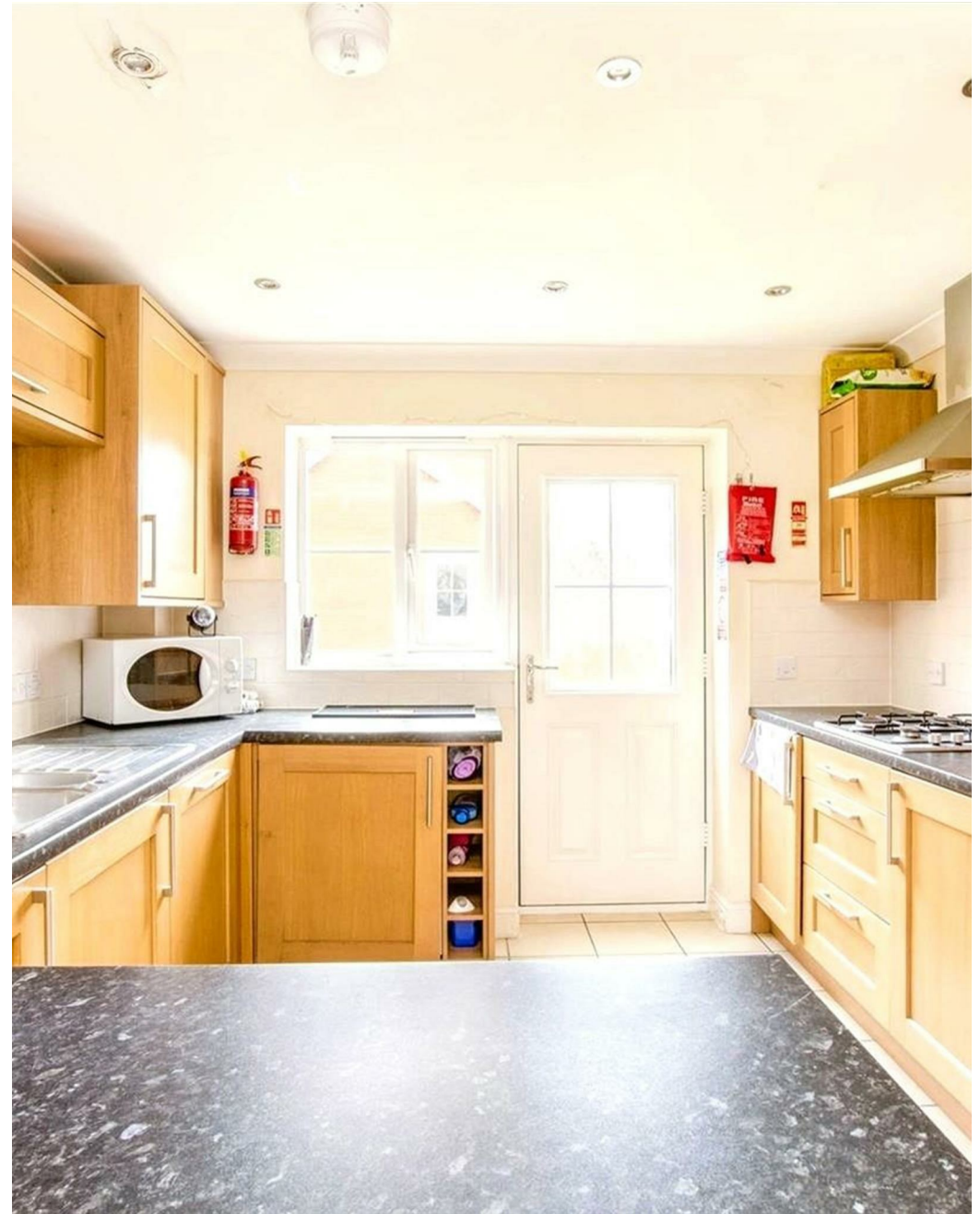


Earles Gardens, Norwich
£2,964 PCM

“

We are a team of genuine individuals who hold a deep passion for both property and marketing. Collectively, we bring over 70 years of experience in the property market of Norfolk and Suffolk. Our affection for both counties runs deep, and we are enthusiastic about sharing our passion with you.

Colin McKenzie | **Branch Partner**







THE DETAIL_____

abbotFox presents

* Student/Sharers Let – 2026/2027 Academic Year *

This beautifully presented six-bedroom student property, finished to a high specification throughout, offers an ideal home for students or professional sharers seeking stylish and comfortable accommodation close to the University of East Anglia.

The property boasts a newly fitted modern kitchen equipped with quality appliances and ample storage, alongside a spacious communal lounge and dining area, providing the perfect space to relax, study, or socialise. Each bedroom is generously sized and thoughtfully furnished to create a comfortable and practical living environment.

Externally, the home features a private enclosed rear garden, ideal for enjoying the warmer months or hosting outdoor gatherings.

Situated in a popular and convenient area, the property benefits from easy access to a wide range of local amenities, including shops, cafes, parks, and riverside walks. Regular bus services offer quick connections to Norwich city centre, the Norfolk and Norwich University Hospital, and main transport links via the A47 Southern Bypass and A11.

Combining modern finishes, spacious interiors, and a fantastic location, this property is perfectly suited for the next group of students looking to secure a high-quality home for the 2025/2026 academic year. Enquire early to avoid disappointment.







THE HIGHLIGHTS__

- Amazing Location
- Student 2026/2027
- Communal Living
- Large Rooms

Let's talk

01603 660000

sales@abbotfox.co.uk

[@abbotfox](#)

EPC RATING -

Disclaimer – In accordance with the Property Misdescriptions Act, the company abbotFox gives notice that all descriptions, references to condition, necessary permissions for use and other details are given in good faith and believed to be correct, but any purchaser should not rely on them as statements of fact, and must satisfy themselves by inspection or other means, as to their accuracy.