



Chelsea Manor Street, SW3

£646 Per week

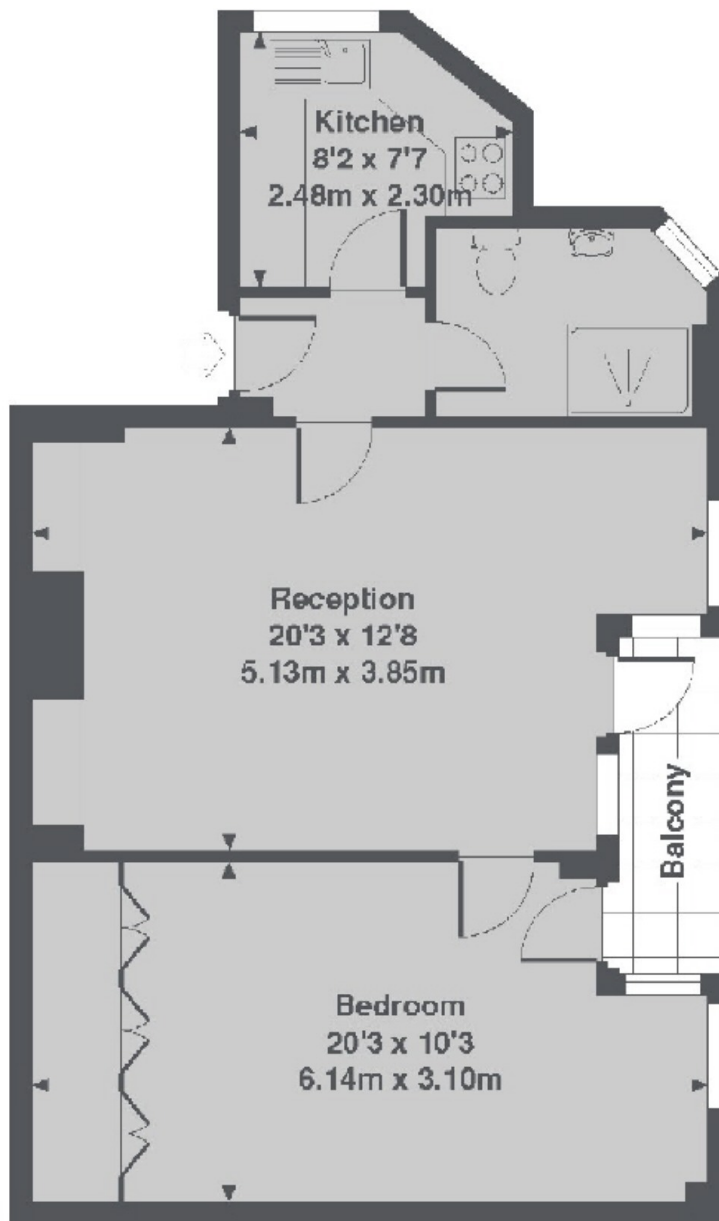
A newly repainted, recarpeted one double bedroom apartment on the third floor with a lift and porter in an Art-Deco building. The property benefits from amazing natural light, plenty of built in storage and a private balcony. HEATING & HOT WATER INCLUDED.

Chesil Court is an Art-Deco portered block, built in 1938 ideally located on Chelsea Manor Street, south the the Kings Road. Local restaurants, shops and transport links are moments away.

Features

- Large One Bedroom
- Built-in Storage
- Private Balcony
- Porter
- Lift
- Third Floor

Chelsea Manor Street, London, SW3



3rd floor

Chesil Court, SW3
Total Approx. Floor area 552 Sq. Ft. (51.3 Sq. M.)