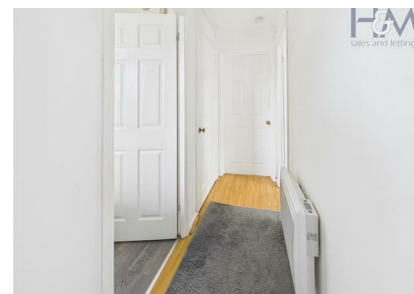
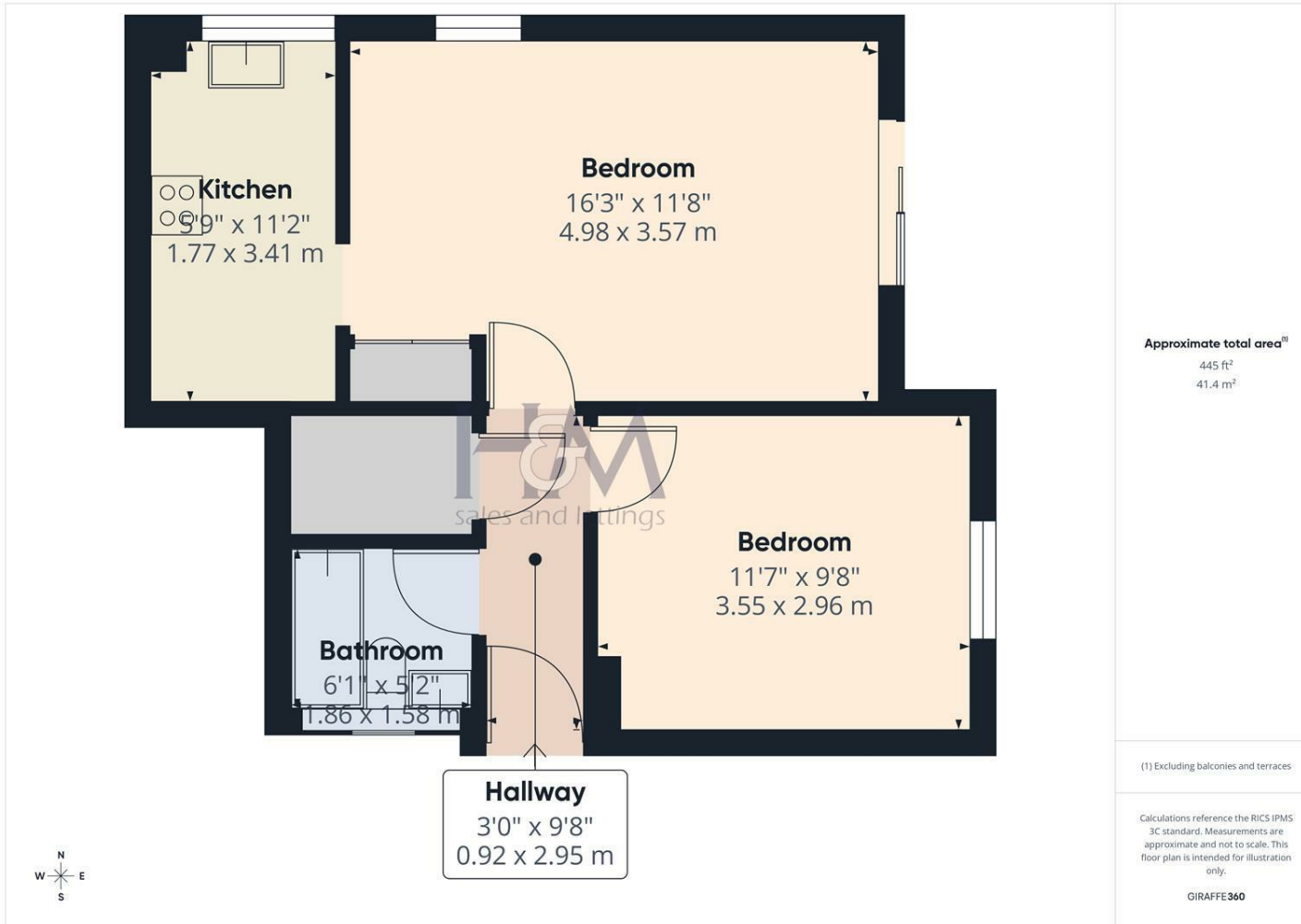


Bradman Way, Stevenage, Hertfordshire, SG1 5RE

£1,195 PCM



One bedroom ground floor maisonette located in the Pin Green area of Stevenage. with allocated parking, access to outside space, and white goods included. Available in June 2026, for more information and to arrange a viewing please call 01438 728444.



86 High Street
 Stevenage
 Hertfordshire
 SG1 3DW
 01438 728444

stevenage@homesandmortgages.co.uk

Energy Efficiency Rating

	Current	Potential
Very energy efficient - lower running costs		
(92 plus) A		
(81-91) B		
(69-80) C		
(55-68) D	68	74
(39-54) E		
(21-38) F		
(1-20) G		
Not energy efficient - higher running costs		

England & Wales

EU Directive
 2002/91/EC

