



17 Buttercup Close
Wellingborough, NN9 6GH



Simpson & Partners

Tucked away in a quiet cul-de-sac. This well presented three bedroom semi detached home is situated on the edge of the market town of Raunds with lovely countryside walks on your doorstep and a short walk into the centre and all amenities available. The ground floor comprises of hallway with stairs rising to the first floor and doors to: downstairs wc, kitchen/dining room fitted with ample storage and built in oven, hob and extractor fan, dishwasher and washing machine and fridge/freezer. The living room is set to the rear with patio doors leading out to the enclosed rear garden. To the first floor are three good size bedrooms with the master having en-suite shower room and further family bathroom fitted with a three piece suite comprising of bath with shower over. Externally to the front is a block paved driveway providing off road parking and gated access to the rear garden. The rear garden offers a private aspect with patio, lawn and decking area, all enclosed by timber fence surround. Viewing is highly recommended to appreciate this lovely home. More photos to follow



£275,000



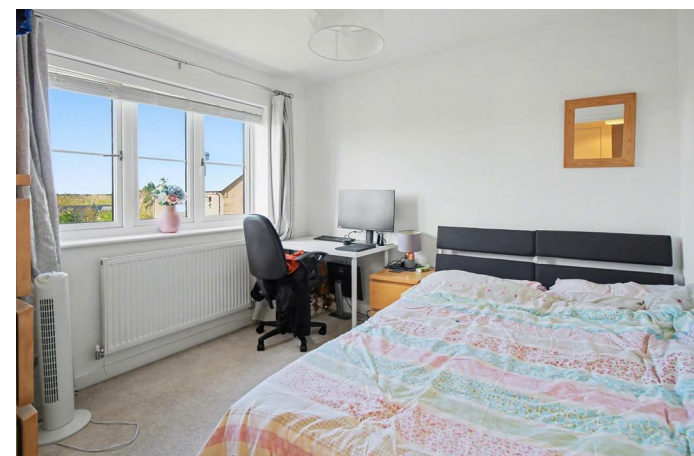
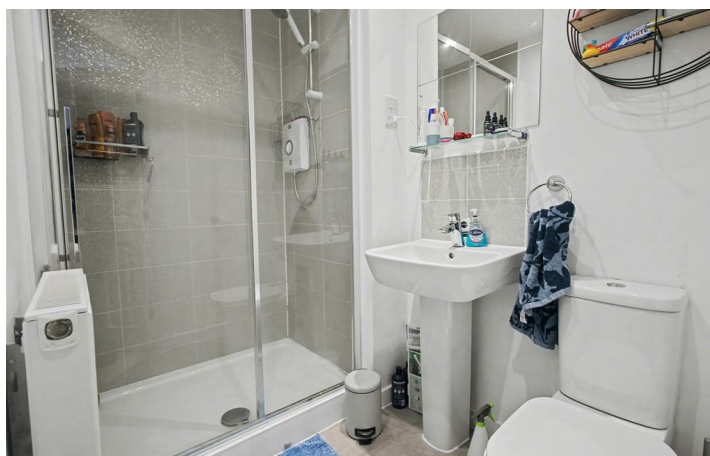
3



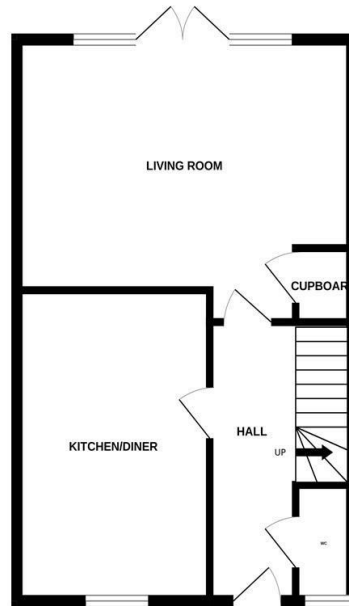
2



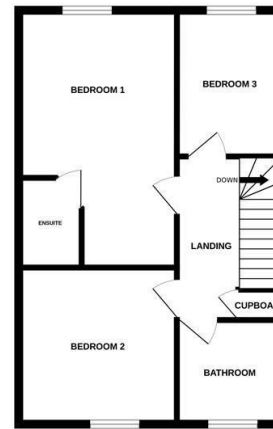
1



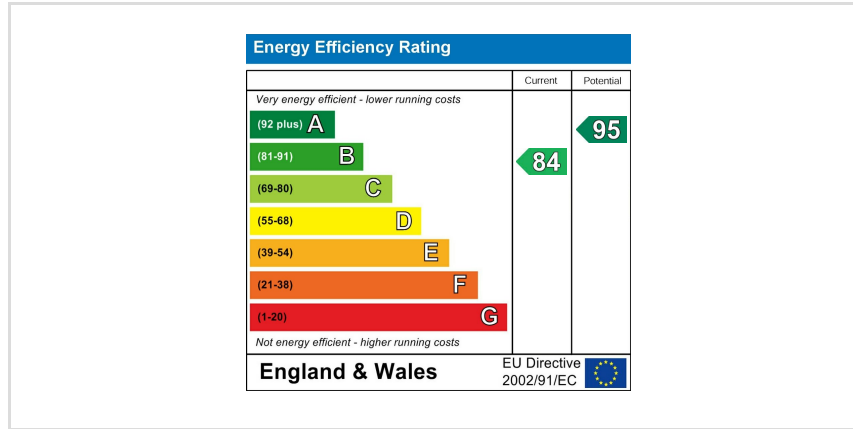
GROUND FLOOR



1ST FLOOR



Whilst every attempt has been made to ensure the accuracy of the floor plan contained here, measurements of doors, windows, rooms and any other items are approximate and no responsibility is taken for any error, omission, or mis-statement. The plan is copyright to Simpson and Partners and is for illustrative purposes and should only be used as such for any prospective purchase. The services, systems and appliances shown have not been tested and no guarantee as to their operability can be given. Made with Metreapp v2.0.0.



When you buy with Simpson and Partners, you know **you'll be in safe hands**. From the moment you walk through our doors, we'll make you **feel truly welcome**. Our sales consultants and financial advisors will take you through **every step of the process**, offering **free expert advice** along the way, from help choosing the right mortgage and insurance through to finding your conveyancer. And if you need help selling your home too, **with over 20 years of local experience, you can trust us to get you moving**.



**Simpson
& Partners**

Making Every
Journey Personal



01832 731222

thrapston@simpsonandpartners.co.uk

<https://www.simpsonandpartners.co.uk/>

43-45 High Street, Thrapston, Northants, NN14 4JJ