



New Cavendish Street, W1G

£1,200 Per week

Arranged over the second and third floors of this attractive red brick building on New Cavendish Street, a beautifully presented two bedroom apartment.

There are numerous transport links from Bond Street, Baker Street, Great Portland Street and Marylebone stations. The open spaces of Regent's Park are only a short walk away.

Features

- Marylebone Village
- Duplex Apartment
- Two Bedrooms
- Shower Room
- Modern Kitchen
- Large Reception



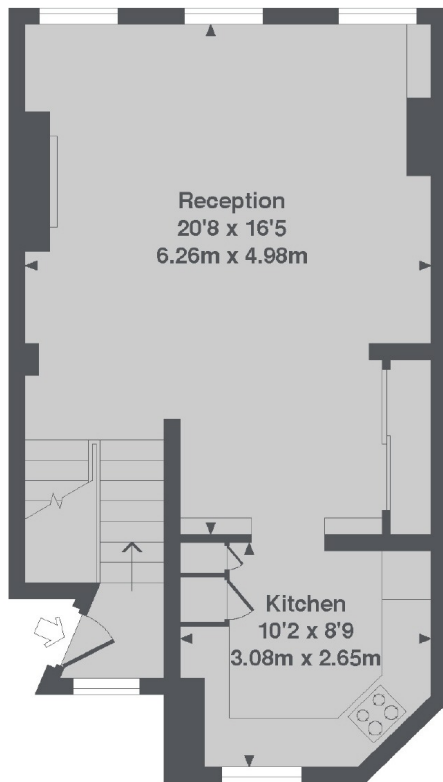
New Cavendish Street, W1G

On the second floor you have a modern kitchen and reception room with built-in storage. Both bedrooms are on the top floor with built-in wardrobes to the principal room and a modern shower room.

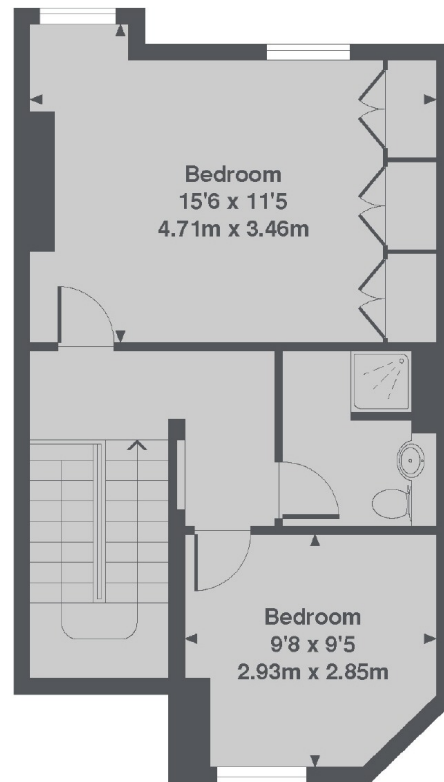
New Cavendish Street is located in the heart of Marylebone Village, with the vibrant shops, bars, cafes and restaurants of Marylebone High street on your doorstep.



New Cavendish Street, London, W1G



2nd Floor



3rd floor

New Cavendish Street, W1G
Total Approx. Floor area 896 Sq. Ft. (83.2 Sq. M.)

Dexters

Marylebone
53-55 Weymouth Street
London
W1G 8NJ
Lettings
0207 224 5545

Energy Rating: D. We aim to make our particulars both accurate and reliable. However they are not guaranteed; nor do they form part of an offer or contract. If you require clarification on any points then please contact us, especially if you're traveling some distance to view. Please note that appliances and heating systems have not been tested and therefore no warranties can be given as to their good working order.

 **RICS** | Regulated
Estate Agent
and Letting Agent

[dexters.co.uk](https://www.dexters.co.uk)