



Price
£350,000

Freehold

3x  2x  1x 

**The Chalvington,
Osborne Gardens,
Meadowbridge, Herne
Bay, Kent, CT6**

Wards
Helping you move forwards



Main features

- **Bespoke designed fitted kitchen with integrated Bosch appliances**
- **Contemporary style sanitaryware to bathroom and en-suite with heated towel rails**
- **Built-in wardrobe to bedroom 1**
- **Air source heat pump**
- **Fencing, turf and patio to rear garden**
- **Off-road parking with EV charging point**

Accommodation

GROUND FLOOR

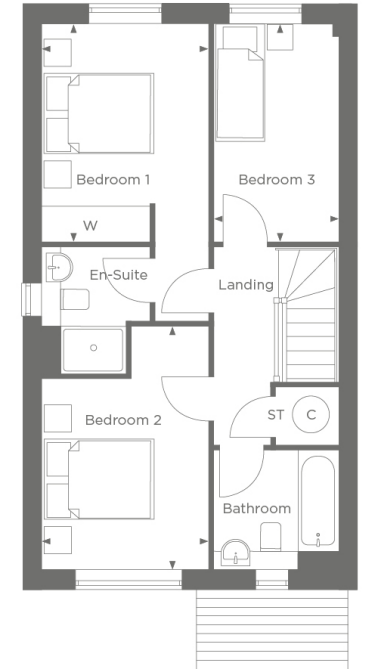
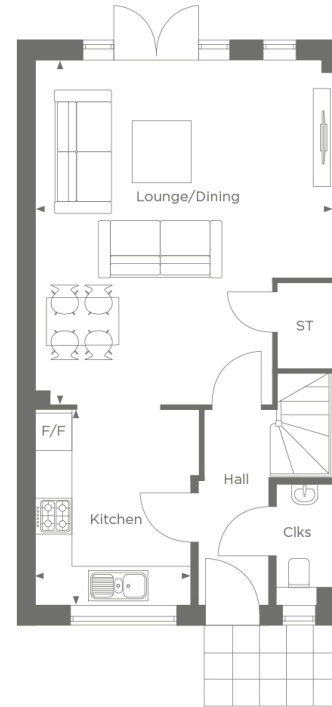
Entrance Hallway
 Lounge/Dining: 19'1 x 16'4 (5.82m x 4.98m)
 Kitchen: 10'10 x 8'6 (3.30m x 2.59m)
 Cloakroom

FIRST FLOOR

Landing
 Bedroom 1: 12'0 x 9'2 (3.66m x 2.80m)
 En Suite
 Bedroom 2: 13'5 x 9'2 (4.09m x 2.80m)
 Bedroom 3: 12'0 x 6'11 (3.66m x 2.11m)
 Bathroom

OUTSIDE

Front Garden
 Rear Garden
 Off-Road Parking



Call Herne Bay - 01227 361226 ■ wardsof Kent.co.uk

■ If buying to let, the energy rating will need to be improved to at least 'E' rating before you can let the property
 ■ Appliances & services are untested, dimensions are approximate and floor plans are not to scale

■ Legal advice should be taken to verify fixtures/fittings, planning, alterations and/or lease details



11238974/20251114/JB/GG