

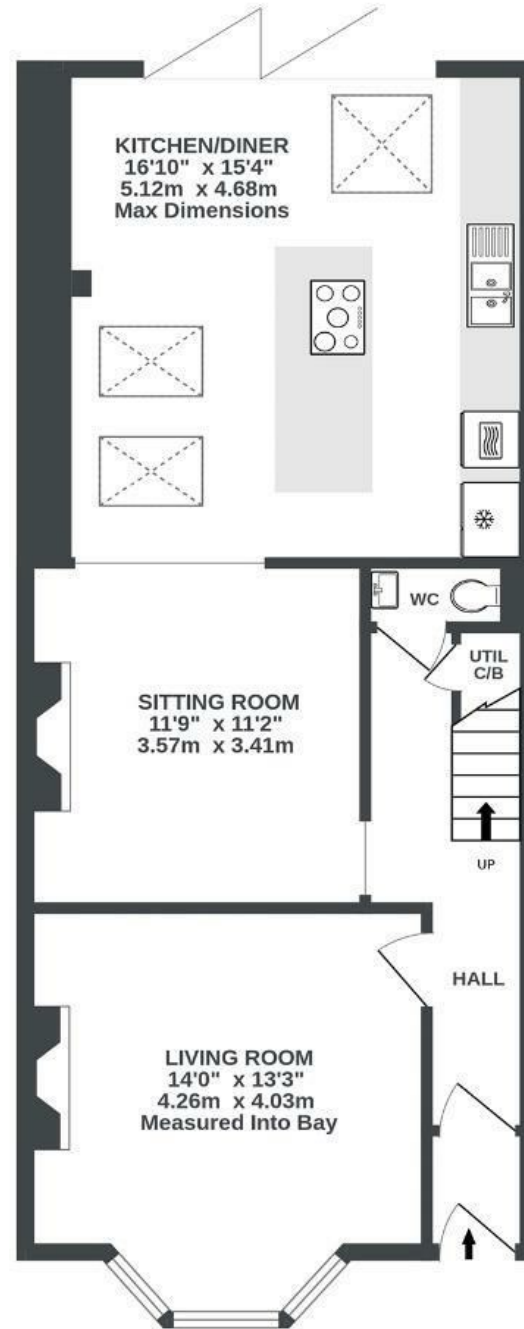
# Hill Avenue

## VICTORIA PARK

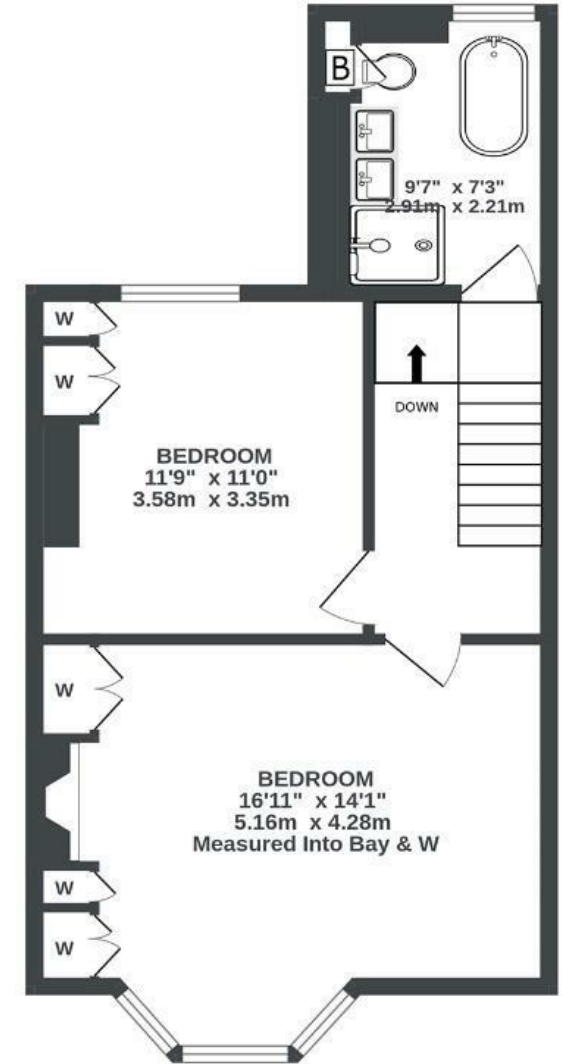
APPROXIMATE FLOOR AREA  
103.3 SQM / 1112 SQFT



GROUND FLOOR  
644 sq.ft. (59.9 sq.m.) approx.



1ST FLOOR  
468 sq.ft. (43.4 sq.m.) approx.



Illustrations are for reference purposes only, measurements are approximate, not to scale.

Boardwalk

# Hill Avenue , BRISTOL

£

£575,000



BS3 4SN

zzz

2 Bedrooms



2 Bathrooms

*“We’ve loved living in this house. Being right by the park means we get the best of both worlds – we’re really close to the city centre, train station and airport, but when we look out of the bay windows we see greenery and the changing seasons. The park has been such a big part of our time here. We held our daughter’s first birthday there, and it’s where she learnt to ride her scooter and bike – memories we’ll always treasure.”*

