

Oakford Road, NW5

£550,000

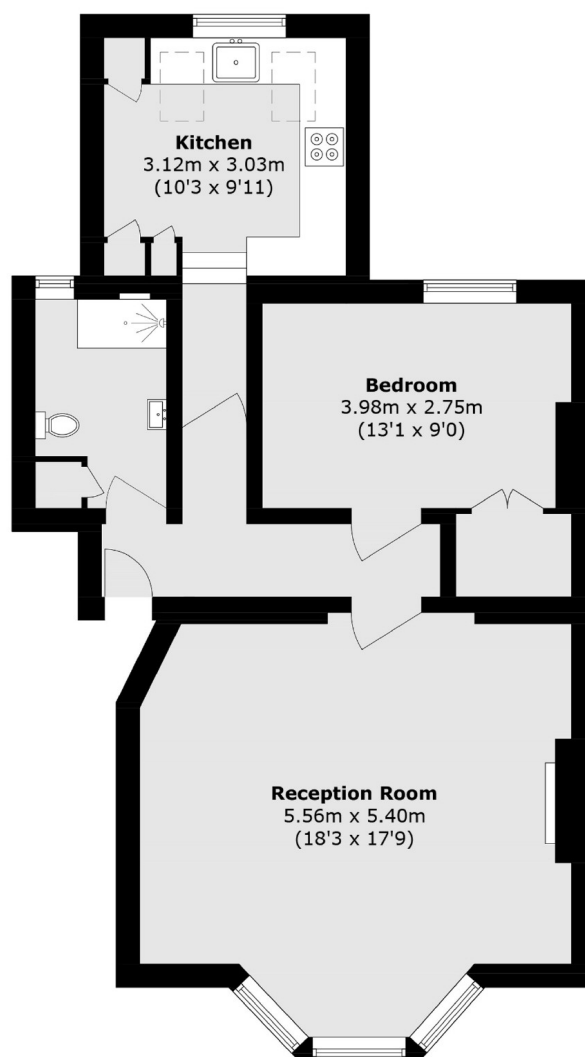
A large one bedroom flat in the heart of Tufnell Park. The flat has a separate kitchen and living area, high ceilings, original features, and has been recently renovated while retaining its period character.

Oakford Road is equidistant from the three excellent transport links of Kentish Town (Thameslink), Tufnell Park (Northern line) and Gospel Oak (Overground) and located close to the rolling acres of Hampstead Heath.

Features

- One Bedroom
- Raised Ground Floor
- Period Conversion
- Original Features
- Chain Free
- Great Transport Links

Oakford Road, London, NW5



Total area (approx.): 63.9 sq. m (687.8 sq. ft)

Dexters

Dartmouth Park & Tufnell Park
64 Chetwynd Road
Dartmouth Park
London
Sales
020 7284 0101

Energy Rating: D. We aim to make our particulars both accurate and reliable. However they are not guaranteed; nor do they form part of an offer or contract. If you require clarification on any points then please contact us, especially if you're traveling some distance to view. Please note that appliances and heating systems have not been tested and therefore no warranties can be given as to their good working order.

 **RICS** | Regulated
Estate Agent
and Letting Agent

dexters.co.uk