

Trelawney Road, Callington, PL17

Guide Price £280,000

3 1 1



A three-bedroom detached bungalow, ideally situated in the heart of Callington and just moments from local amenities. Occupying a generous-sized plot, the property benefits from a private driveway, garage, and no onward chain.

Callington is a charming Cornish town located within a prime location in South East Cornwall and just 15 miles from Plymouth City Centre. The Town benefits from a range of facilities including a health centre, sports centre/gym, supermarkets, church and both primary and secondary schools. The area provides some idyllic countryside walks with Cotehele estate and house, Kit Hill and the Tamar Valley all nearby making it an ideal place for families and individuals alike.

Key Features

- TO ARRANGE A VIEWING PLEASE QUOTE BL0650
- Three Bedrooms
- Private Driveway
- Generous-Sized Plot
- Spacious Reception Room
- Detached Bungalow
- No Onward Chain
- Garage
- Utility Room
- Freehold

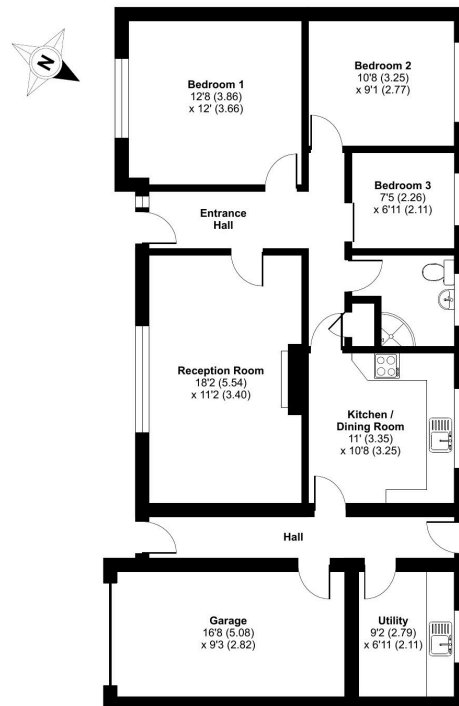
Trelawney Road, Callington, PL17

Approximate Area = 967 sq ft / 89.8 sq m

Garage = 153 sq ft / 14.2 sq m

Total = 1120 sq ft / 104 sq m

For identification only - Not to scale



GROUND FLOOR

Floor plan produced in accordance with RICS Property Measurement Standards incorporating International Property Measurement Standards (IPMS) Residential. © richcom 2025. Produced for Ben Estates TA Ben Langton Powered By exp. REF: 1303460