



110 Smeaton Court | Hertford | SG13 7AU

A sought after town centre and riverside development for this two double bedroomed second floor apartment. Enjoying secured entryphone and gated underground car parking space. This modern flat is convenient to Hertford East rail station and easy walk to the town centre and Hartham Park. Gloss white fitted kitchen and tiled bathroom with LED lighting. Private balcony. Unfurnished. Council Tax band D, EPC rating B. Deposit equal to on month rent.

£1,400 pcm

- Riverside Development
- Two Double bedrooms
- Gloss white fitted kitchen
- Secure entry system
- Gated secure parking bay



Property Description

COMMUNAL ENTRANCE HALL

ENTRANCE HALL

LIVING ROOM

14' 0" x 10' 4" (4.27m x 3.15m)

KITCHEN

7' 10" x 7' 8" (2.39m x 2.34m)

BEDROOM 1

10' 1" x 9' 4" (3.07m x 2.84m)

BEDROOM 2

15' 9" x 9' 4" (4.8m x 2.84m)

BATHROOM

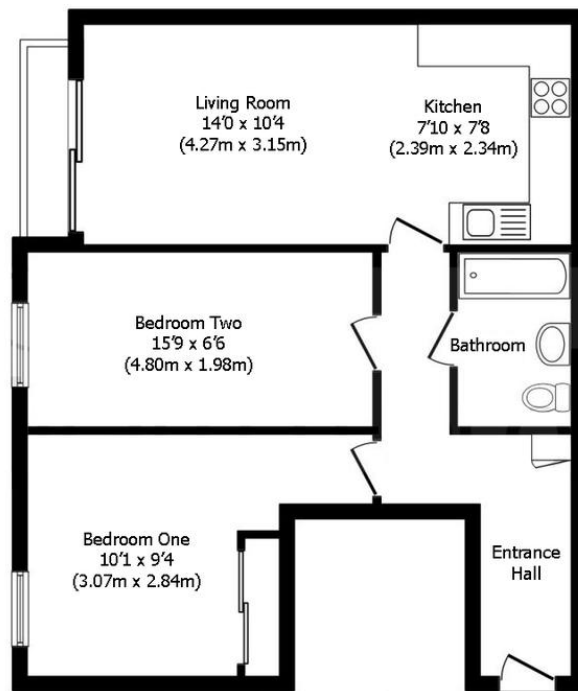
6' 10" x 5' 6" (2.08m x 1.68m)

ALLOCATED PARKING

one space

COMMUNAL RIVERSIDE GARDENS





Second Floor Plan

Total floor area 63.0 sq. m. (678 sq. ft.) approx

This plan is for illustration purposes only and may not be representative of the property. Plan not to scale.

Powered by audioagent.com

Council Tax Band

D

Viewing Arrangements

Strictly by appointment

Contact Details

6 Millbridge

Hertford

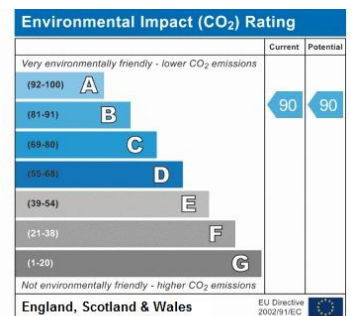
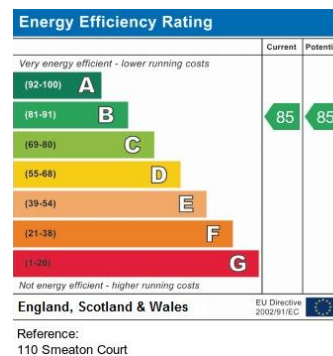
Hertfordshire

SG14 1PY

www.shepherdsfhertford.com

lettings@shepherdsfhertford.co.uk

01992 551955



Agents Note: Whilst every care has been taken to prepare these sales particulars, they are for guidance purposes only. All measurements are approximate are for general guidance purposes only and whilst every care has been taken to ensure their accuracy, they should not be relied upon and potential buyers are advised to recheck the measurements