

## St. Stephens Avenue, W12

£329,000

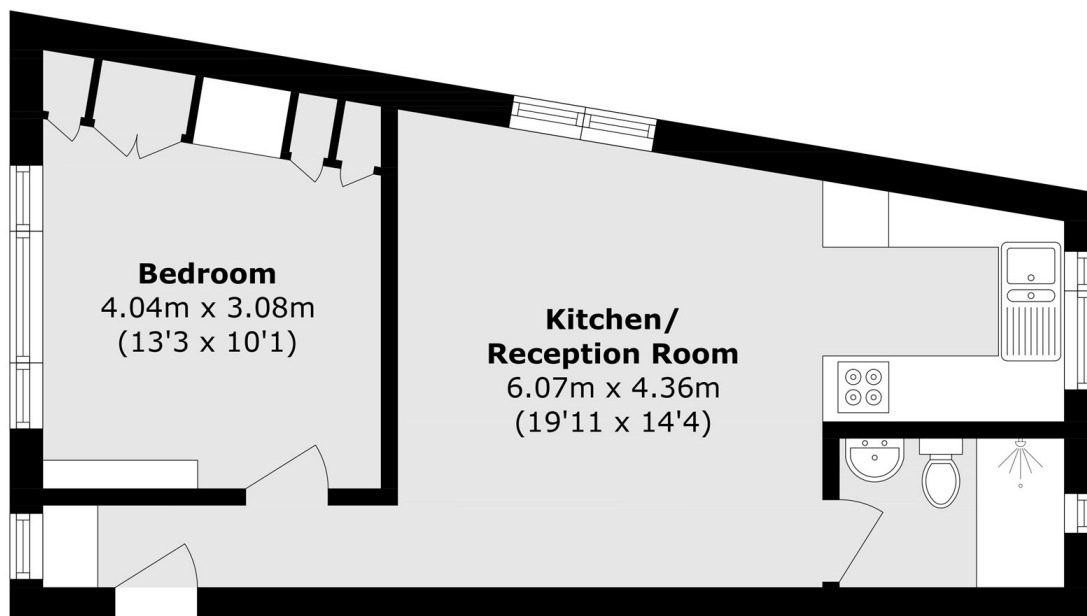
A one-bedroom apartment set on the raised ground floor of a Victorian conversion, offered with no onward chain. An ideal purchase for first-time buyers or investors.

Ideally located on a sought-after street in Shepherd's Bush, within walking distance of Goldhawk Road, Shepherd's Bush, and Hammersmith stations, as well as the amenities of Westfield and Soho House.

### Features

- No Onward Chain
- Victorian Conversion
- Raised Ground Floor
- Westfields
- Soho House
- Goldhawk Road Station

# St. Stephens Avenue, London, W12



## Ground Floor

Total area (approx.): 38.3 sq. m (412.3 sq. ft)