



**31 Palm Tree Way, Lyminge - CT18 8JL**

Guide Price **£350,000**

Approximate Gross Internal Area (Excluding outbuilding) = 79 sq m / 854 sq ft  
Outbuilding = 3.5 sq m / 38 sq ft

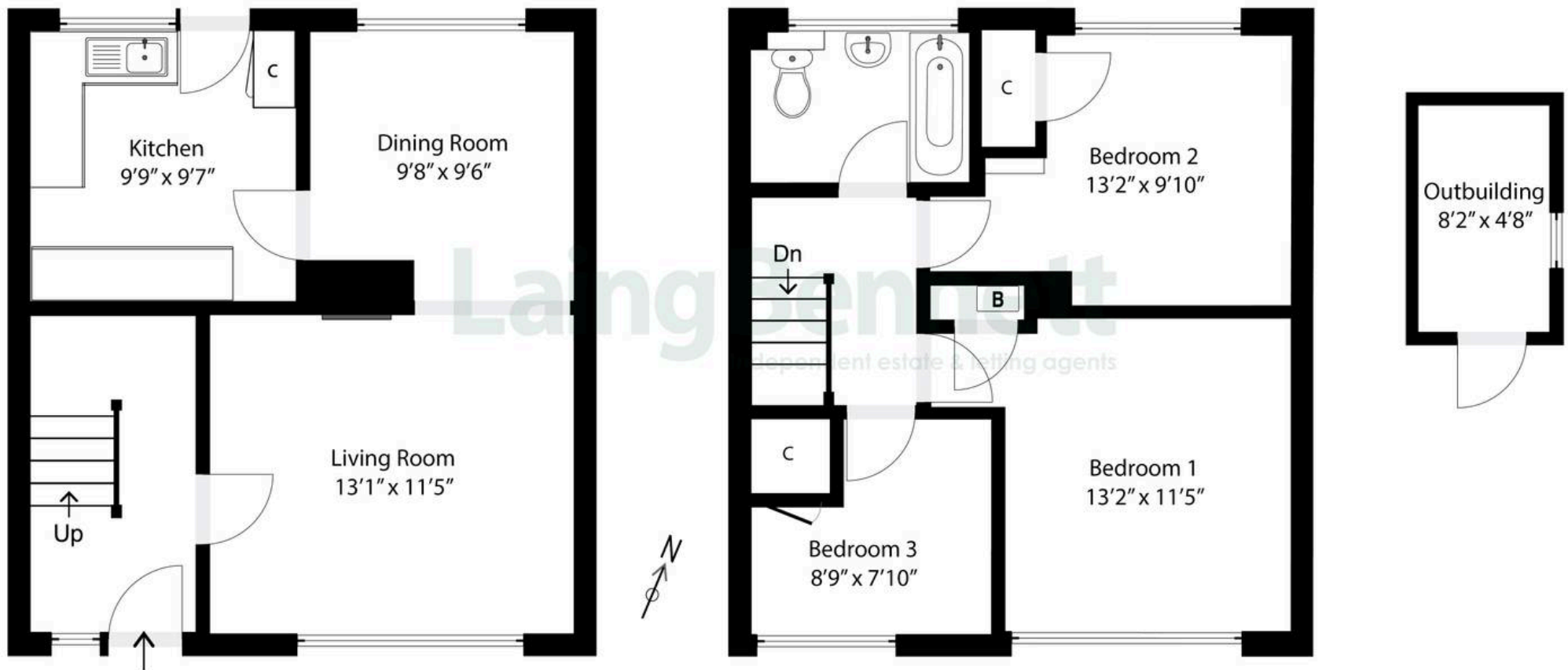


Illustration for Identification purposes only. Measurements are approximate. Dimensions given are between the widest points.  
Not to scale. Outbuildings are not shown in actual location.  
© Unauthorised reproduction prohibited - chriskemps@hotmail.com



## 31 Palm Tree Way

Lyminge, Folkestone

If you are looking to put your mark on a home then don't miss out on this superb opportunity to purchase a three bedroom spacious property. This house has been under the same ownership for over fifty years. The property benefits from a large plot and has potential for extension (subject to any necessary planning permissions). Accommodation comprises: Ground floor - Spacious entrance hall, living room open plan to dining room and kitchen. First floor - Landing, family bathroom/WC and three bedrooms. Outside - No Chain!

Council Tax band: B

Tenure: Freehold

EPC Energy Efficiency Rating: C

EPC Environmental Impact Rating:





## Laing Bennett

Laing Bennett Ltd, The Estate Office, 8 Station Road – CT18 8HP

01303 863393

[info@laingbennett.co.uk](mailto:info@laingbennett.co.uk)

[www.laingbennett.co.uk/](http://www.laingbennett.co.uk/)

DISCLAIMER – These details are for guidance only and do not form part of an offer or contract. Measurements are approximate. Laing Bennett Ltd and the Vendor/Landlord accept no liability. Services and appliances are untested. Applicants must make their own checks. Items shown may not be included. No staff have authority to give warranties.