



Flat 21, The Promenade 17-18 Eversfield Place

, St Leonards-On-Sea, TN37 6BZ

Asking Price £225,000



# Flat 21, The Promenade 17-18 Eversfield Place



## Description

A beautifully presented two double bedroom fourth floor apartment WITH LIFT, ideally positioned on the seafront in Eversfield Place, enjoying far-reaching panoramic views out to sea.

Accessed via a lift to the fourth floor, the property offers well-proportioned and light-filled accommodation throughout. The standout feature is the private balcony, which provides stunning uninterrupted sea views extending towards Dungeness and Beachy Head on a clear day.

The apartment is presented in excellent condition, with a modern fitted kitchen incorporating contemporary units and integrated appliances, alongside a stylish, well-appointed bathroom. There are two generous double bedrooms, both offering comfortable accommodation and ample natural light.

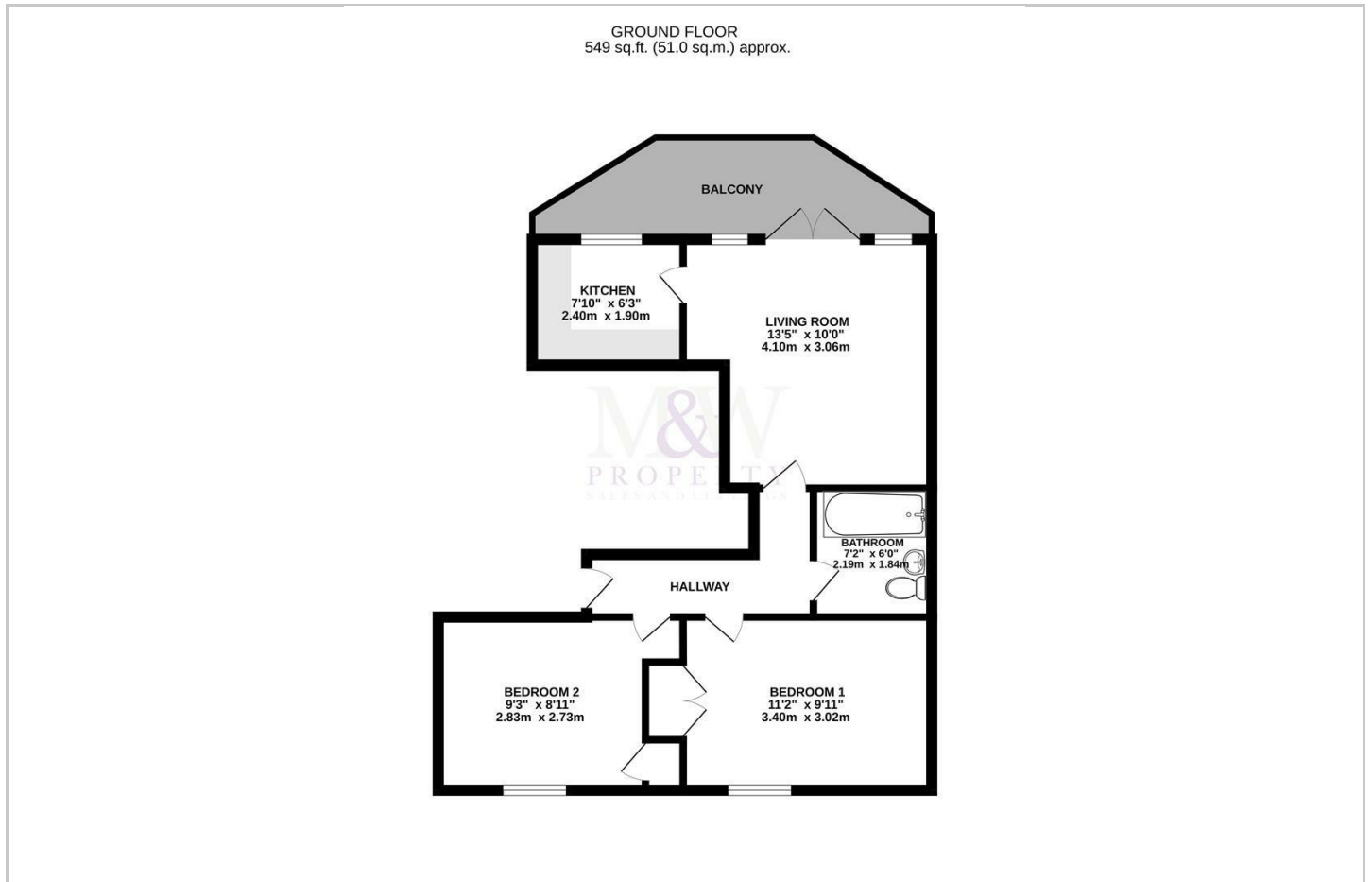
Further benefits include lift access, a prime seafront location, and close proximity to local amenities, transport links, and the vibrant heart of St Leonards.

- LIFT ACCESS 4th Floor Apartment
- Two Double Bedrooms with Built-in Storage
- Bright and Warm
- Beautifully Presented
- Private Balcony with Panoramic Sea Views
- Service Charge £2,000 Per Annum
- No Onward Chain
- Recently Installed Bathroom

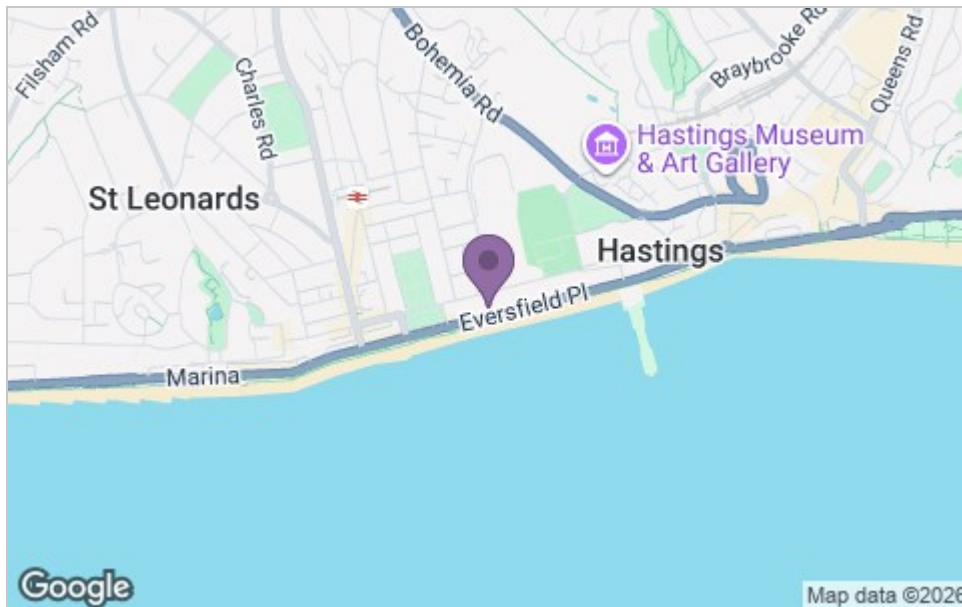




## Floor Plan



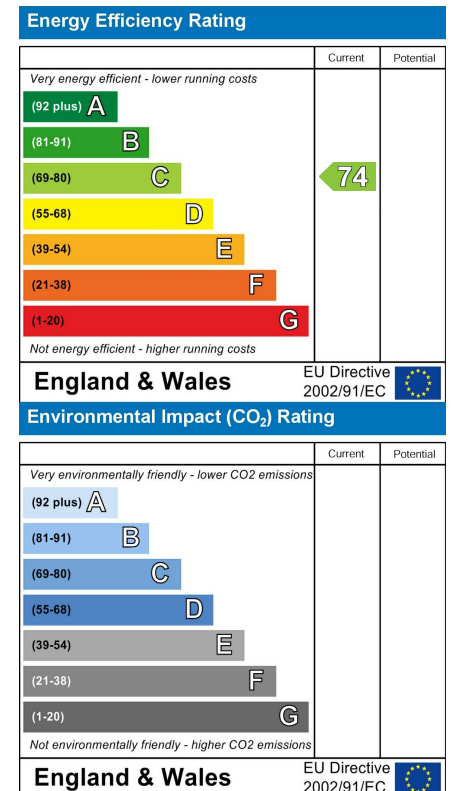
## Area Map



## Viewing

Please contact our St Leonards on Sea Office on 01424 420073 if you wish to arrange a viewing appointment for this property or require further information.

## Energy Efficiency Graph



These particulars, whilst believed to be accurate are set out as a general outline only for guidance and do not constitute any part of an offer or contract. Intending purchasers should not rely on them as statements of representation of fact, but must satisfy themselves by inspection or otherwise as to their accuracy. No person in this firm's employment has the authority to make or give any representation or warranty in respect of the property.