



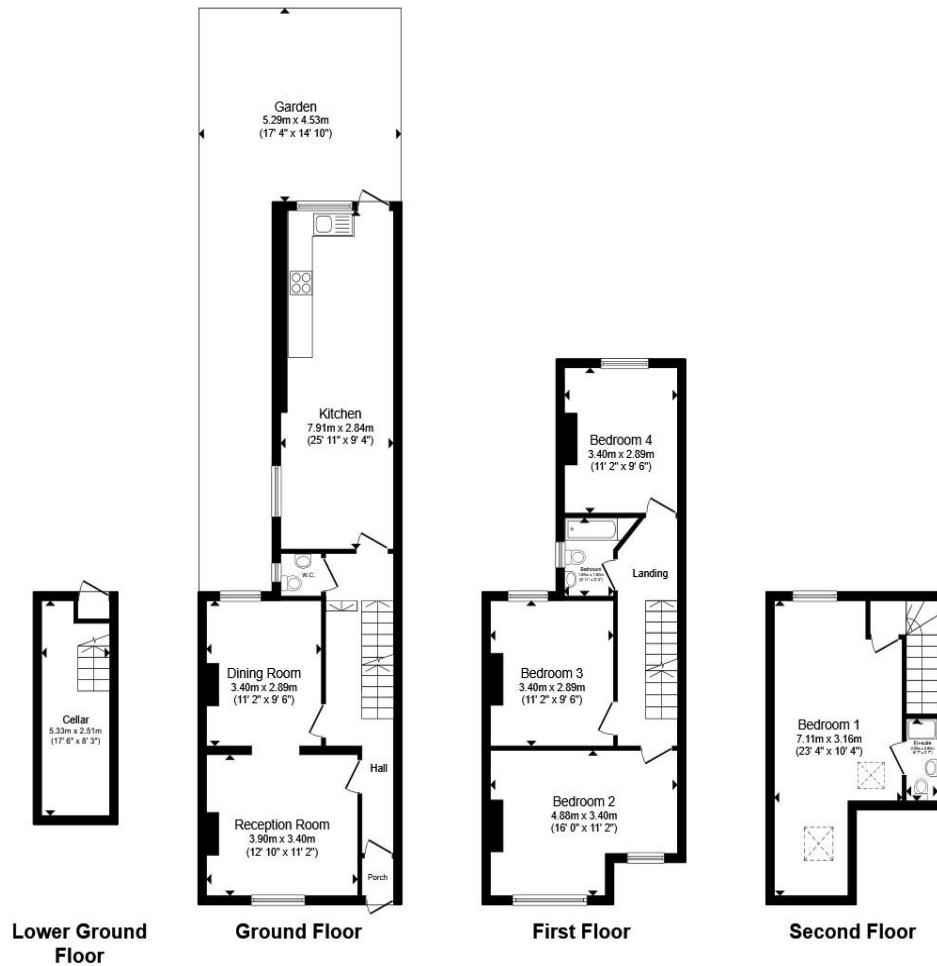
Algarve Road, London SW18 3EQ

welcome to

Algarve Road, London

A four bedroom period house arranged over three floors, located on a pretty tree-lined street, moments from Earlsfield station.





A four bedroom period house arranged over three floors, located on a pretty tree-lined street, moments from Earlsfield station.

The property which requires some updating, benefits from two reception rooms, separate kitchen, four bedrooms and two bathrooms, and a wealth of character with large windows, high ceilings and period features throughout. Further benefits include a large cellar and the potential to build across the side return (subject to planning permission).

Algarve Road is a highly desirable prime location which runs off Garratt Lane and is very well served by excellent transport links, restaurants, cafes, leisure and shopping facilities all within close proximity of the property. Earlsfield mainline station is located within a distance of 0.2 mile.

Viewing advised.

Total floor area 136.4 m² (1,468 sq.ft.) approx

This floor plan is for illustrative purposes only. It is not drawn to scale. Any measurements, floor areas (including any total floor area), openings and orientation are approximate. No details are guaranteed, they cannot be relied upon for any purpose and they do not form part of any agreement. No liability is taken for any error, omission or misstatement. A party must rely upon its own inspection(s). Powered by www.propertybox.io



welcome to

Algarve Road, London

- Period Four Bedroom Mid-Terrace Family House
- Moments from Earlsfield Mainline Station
- Requires some Updating, Potential to Extend
- A Wealth of Character Throughout
- Highly Desirable Location

Tenure: Freehold EPC Rating: Awaiting

Council Tax Band: F

£1,175,000



Please note the marker reflects the postcode not the actual property

view this property online [barnardmarcus.co.uk/Property/EAR105366](https://www.barnardmarcus.co.uk/Property/EAR105366)



Property Ref:
EAR105366 - 0003

1. MONEY LAUNDERING REGULATIONS Intending purchasers will be asked to produce identification documentation at a later stage and we would ask for your co-operation in order that there is no delay in agreeing the sale. 2. These particulars do not constitute part or all of an offer or contract. 3. The measurements indicated are supplied for guidance only and as such must be considered incorrect. Potential buyers are advised to recheck measurements before committing to any expense. 4. We have not tested any apparatus, equipment, fixtures or services and it is in the buyers interest to check the working condition of any appliances. 5. Where an EPC, or a Home Report (Scotland only) is held for this property, it is available for inspection at the branch by appointment. If you require a printed version of a Home Report, you will need to pay a reasonable production charge reflecting printing and other costs. 6. We are not able to offer an opinion either written or verbal on the content of these reports and this must be obtained from your legal representative. 7. Whilst we take care in preparing these reports, a buyer should ensure that his/her legal representative confirms as soon as possible all matters relating to title including the extent and boundaries of the property and other important matters before exchange of contracts.

Barnard Marcus is a trading name of Sequence (UK) Limited which is registered in England and Wales under company number 4268443, Registered Office is Cumbria House, 16-20 Hockliffe Street, Leighton Buzzard, Bedfordshire, LU7 1GN. VAT Registration Number is 500 2481 05.


barnard marcus



020 8879 7222



Earlsfield@barnardmarcus.co.uk



525 Garratt Lane, London, SW18 4SR



[barnardmarcus.co.uk](https://www.barnardmarcus.co.uk)