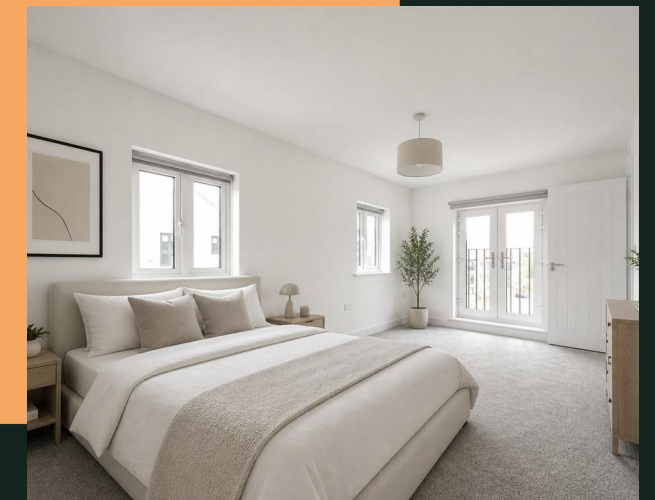


# Millstone Way, LS16

PROPERTY ADDRESS  
6 Millstone Way  
Leeds  
LS16 6FZ

Energy Efficiency Rating		
	Current	Potential
Very energy efficient - lower running costs		
(92 plus) <b>A</b>		<b>96</b>
(81-91) <b>B</b>	<b>84</b>	
(69-80) <b>C</b>		
(55-68) <b>D</b>		
(39-54) <b>E</b>		
(21-38) <b>F</b>		
(1-20) <b>G</b>		
Not energy efficient - higher running costs		
<b>England &amp; Wales</b>	EU Directive 2002/91/EC	



Call Us  
01132440251

Email Us  
leeds@vision-properties.co.uk

**vision**

We look at  
estate agency  
differently.

**vision**

- Total cost of first month: £2,907.69 (rent & deposit)
- Recently built
- Unfurnished
- Drive for two cars
- Excellent location

Vision Properties are delighted to present this contemporary two bedroom house in the popular Woodside Vale development.

The recently-built townhouse is spread over three floors and benefits from high spec fixtures and fittings. On the ground floor there's a WC, understairs cupboard, and a bright open-plan kitchen and living room. The contemporary kitchen has integrated appliances including a dishwasher, washing machine and fridge/freezer. There's a spacious double bedroom on the first floor with an ensuite shower room. There's another double ensuite bedroom on the second floor with a separate storage cupboard on the landing. Both bedrooms benefit from Juliet balconies.

The property is unfurnished. Please note that the furniture has been staged virtually for illustration purposes only.

There is a drive for two cars and an electric vehicle charging point.

The house is set in an attractive new build development surrounded by woodland. It's in an excellent location off the Ring Road close to all the amenities Horsforth and the surrounding areas have to offer.

Available from 19th May subject to acceptable referencing.

Rent: £1,350 per calendar month  
 Deposit: £1,557.69  
 Holding deposit: £311.53



2 bedroom  
 House - Semi-  
 Detached  
 £1,350 PCM



The recently-built townhouse is spread over three floors and benefits from high spec fixtures and fittings. On the ground floor there's a WC, understairs cupboard, and a bright open-plan kitchen and living room. The contemporary kitchen has integrated appliances including a dishwasher, washing machine and fridge/freezer. There's a spacious double bedroom on the first floor with an ensuite shower room. There's another double ensuite bedroom on the second floor with a separate storage cupboard on the landing. Both bedrooms benefit from Juliet balconies.

The property is unfurnished. Please note that the furniture has been staged virtually for illustration purposes only.

There is a drive for two cars and an electric vehicle charging point.

The house is set in an attractive new build development surrounded by woodland. It's in an excellent location off the Ring Road close to all the amenities Horsforth and the surrounding areas have to offer.

Available from 19th May subject to acceptable referencing.

Rent: £1,350 per calendar month  
 Deposit: £1,557.69  
 Holding deposit: £311.53