



Wyncliffe Gardens, offers in the region of £180,000

- TWO BEDROOMS
- FAMILY BATHROOM
- EN-SUITE
- MODERN DECOR
- OPEN PLAN KITCHEN/ LIVING
- EPC Rating: C



 2  2  1



About the property

Peter Alan are pleased to present this two bedroom first floor flat, benefiting from two bedrooms, open plan kitchen/ living, a newly renovated en-suite, family bathroom, oak flooring and modern decor throughout. Situated in a convenient location with all amenities within walking distance including shops, schools and local bus stops. This would make a perfect first time buy.



Accommodation

Entrance

Kitchen/ Lounge

18' 3" x 12' 9" MAX (5.56m x 3.89m MAX)

En-Suite

Bedroom One

10' 10" x 10' 9" (3.30m x 3.28m)

Bedroom Two

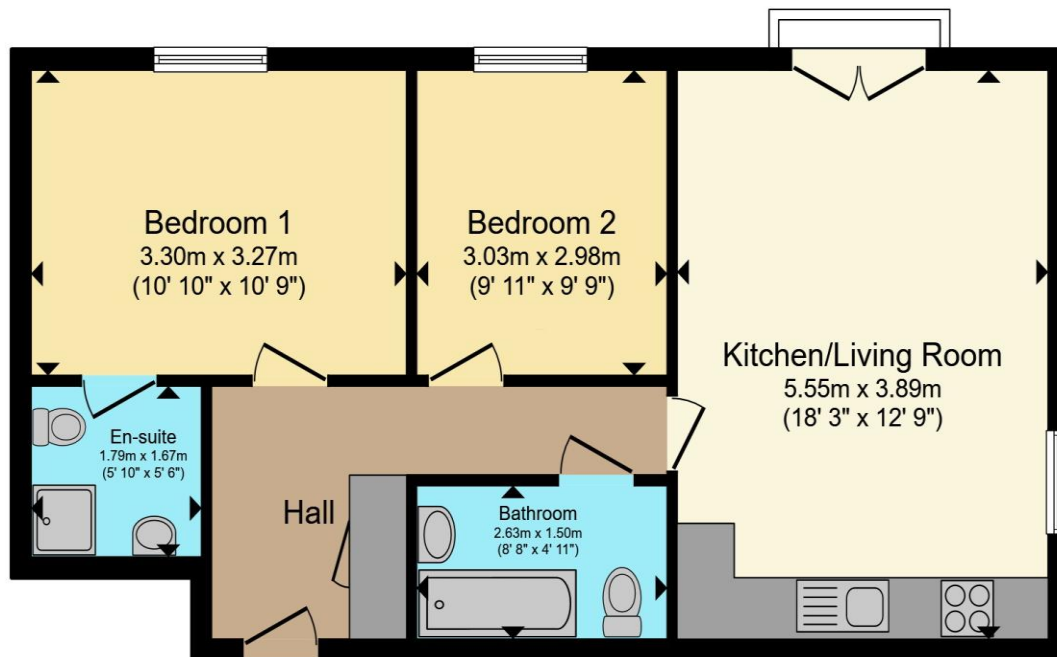
9' 11" x 9' 9" (3.02m x 2.97m)

Bathroom

02920 462246

albanyroad@peteralan.co.uk

Floorplan



Total floor area 57.6 m² (620 sq.ft.) approx

This floor plan is for illustrative purposes only. It is not drawn to scale. Any measurements, floor areas (including any total floor area), openings and orientation are approximate. No details are guaranteed, they cannot be relied upon for any purpose and they do not form part of any agreement. No liability is taken for any error, omission or misstatement. A party must rely upon its own inspection(s). Powered by www.propertybox.io



Important Information

Note while we endeavour to make our sales details accurate and reliable, if there is any point which is of particular interest to you, please contact the office and we will be pleased to confirm the position for you. We have not personally tested any apparatus, equipment, fixtures, fittings or services and cannot verify they are in working order or fit for their purposes. Nothing in these particulars is intended to indicate that carpets or curtains, furnishings or fittings, electrical goods (whether wired or not). Gas fires or light fittings or any other fixtures not expressly included form part of the property offered for sale. This computer generated Floorplan, if applicable, is intended as a general guide to the layout and design of the property. It is not to scale and should not be relied upon for dimensions. Tenure: We cannot confirm the tenure of the property as we have not had access to the legal documents. The buyer is advised to obtain verification from their solicitor or surveyor.

Peter Alan Limited is registered in England and Wales under company number 2073153. Registered Office is Cumbria House, 16-20 Hockliffe Street, Leighton Buzzard, Bedfordshire, LU7 1GN. VAT Registration Number is 500 2481 05. For activities relating to regulated mortgages and non-investment insurance contracts, Peter Alan Limited is an appointed representative of Connells Limited which is authorised and regulated by the Financial Conduct Authority. Connells Limited's Financial Services Register number is 302221. Most buy-to-let

