

# MOOR LANE

£20000pcm

---

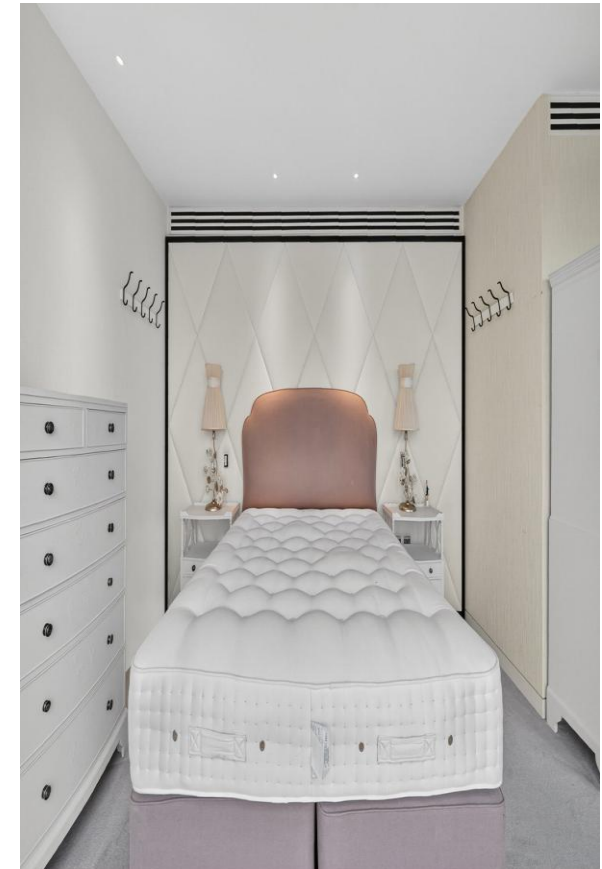
EC2Y

CHESTERTONS

# MOOR LANE

SHORT LET\* An impressive three-bedroom penthouse offers over 2,300 sq ft of elegant living space with stunning panoramic views across the London skyline.





## Specifications

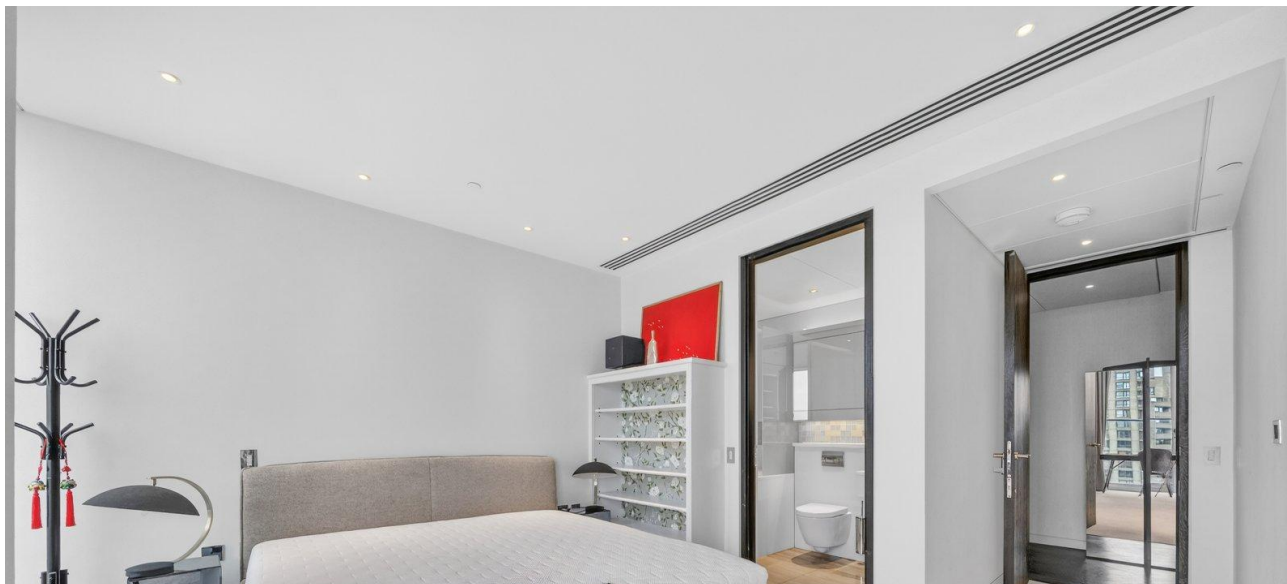
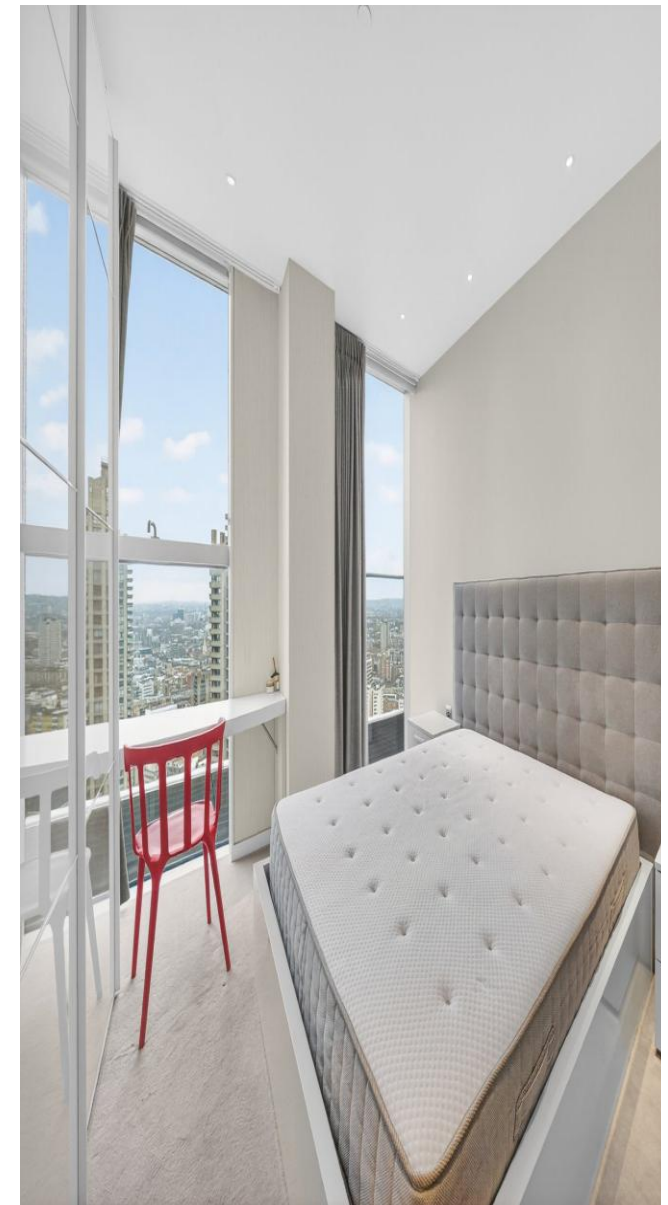
- PENTHOUSE
- 33rd FLOOR
- THREE BEDROOM
- FOUR BATHROOM
- FURNISHED
- ALL BILLS INCLUDED







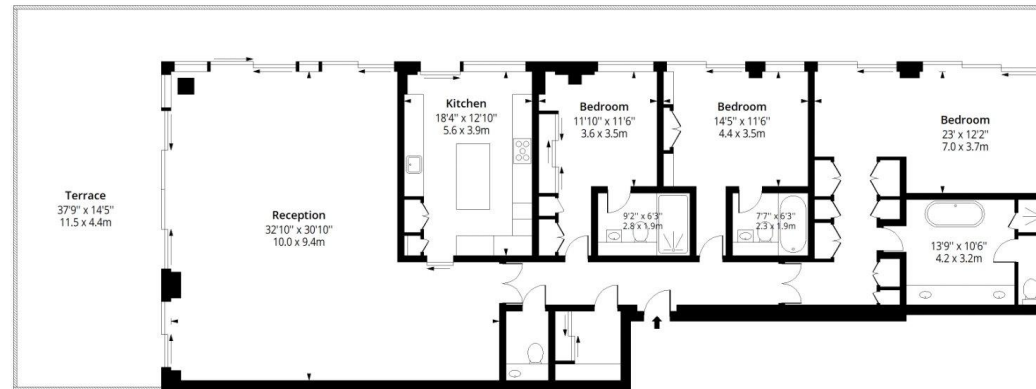




Price: | EPC: B

### Moor Lane EC2Y

Approx. Gross Internal Area 2374 Sq Ft - 220.54 Sq M  
 Approx. Gross Terrace Area 1011 Sq Ft - 93.92 Sq M



**Thirty Third Floor**  
 Floor Area 2374 Sq Ft - 220.54 Sq M



Measured according to RICS IPMS2. Floor plan is for illustrative purposes only and is not to scale. Every attempt has been made to ensure the accuracy of the floor plan shown, however all measurements, fixtures, fittings and data shown are an approximate interpretation for illustrative purposes only. 1 sq m = 10.76 sq feet.

lpaplus.com

Date: 11/3/2025

### Moor Lane, EC2Y

Approximate gross Internal area  
 220.6 sq m / £8.42/Sq.Ft. p/m

This plan is for layout guidance only. Not drawn to scale unless stated. Windows and door openings approximate. Whilst every care is taken in the preparation of this plan, please check all dimensions, shapes and compass bearings before making decisions reliant upon them.

Chestertons Tower Bridge Lettings  
220 Tower Bridge Road  
Tower Bridge, London, SE1

02073576911  
towerbridgelettingsusers@chestertons.c  
chestertons.co.uk

Chesterton Global Ltd trading as Chestertons for themselves and for the vendor of this property whose agents they are, give notice that (i) these particulars do not constitute any part of an offer or contract, (ii) all statements contained within these particulars are made without responsibility on the part of Chestertons or the vendor, (iii) whilst made in good faith, none of the statements contained within these particulars are to be relied upon as a statement or representation of fact, (iv) any intending purchasers must satisfy themselves by inspection or otherwise as to the correctness of each of the statements contained within these particulars, (v) the vendor does not make or give either Chestertons or any person in their employment any authority to make or give representation or warranty whatsoever in relation to this property. Wide angle lenses may be used. ©Copyright Chestertons | Chesterton Global Ltd | Registered Office 40 Connaught Street, Hyde Park, London W2 2AB Registered Company Number 05334580.

