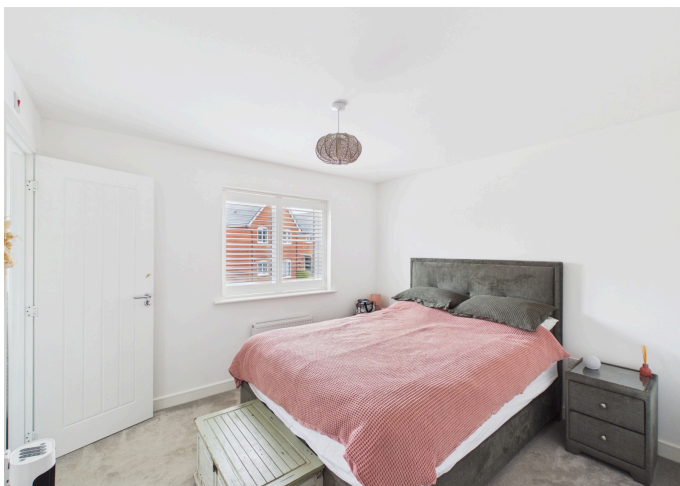




Shaw Vale, Bursledon, SO31 8NQ

Guide price £350,000



Semi-Detached Three Bedroom House

En-Suite To The Master

Modern Kitchen/Diner With Intergrated Appliances

Downstairs WC

Allocating Parking

Located Sought-After Development In Bursledon

We are pleased to present this beautifully presented three-bedroom semi-detached home nestled within the sought-after development in Bursledon.

The property features a welcoming entrance hall leading to a bright and comfortable living room, then leads into a modern kitchen/dining room to the rear providing an ideal space for both everyday family life and entertaining, alongside a spacious downstairs WC.

Upstairs, you'll find three well proportioned bedrooms, two of which feature fitted wardrobes, providing ample storage spaces and the master bedroom benefits further from a contemporary en-suite shower room. A stylish family bathroom completes the accommodation on the first floor.

Outside, the property enjoys a well-maintained rear garden, featuring a patio area ideal for outdoor dining and entertaining, which leads onto a lawned section. Further benefits include allocated parking as well as a garage for added storage and convenience.

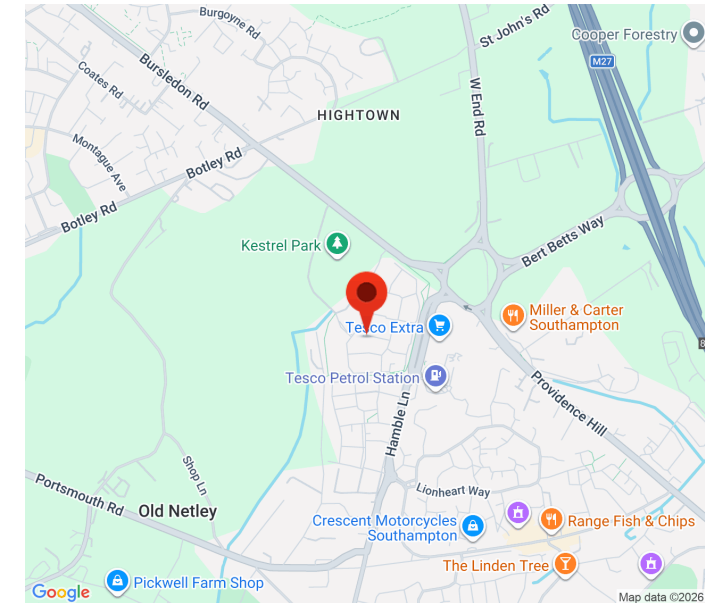
Located in a well regarded for its attractive surroundings, excellent transport links and proximity to the picturesque River Hamble, making it particularly popular with families and professionals alike. Residents benefit from easy access to a range of shops, schools and leisure facilities, while providing convenient connections to Southampton, Portsmouth and beyond via the M27. The area also offers an abundance of green spaces, riverside walks and sailing facilities, allowing residents to enjoy the best of Hampshire's coastal lifestyle.



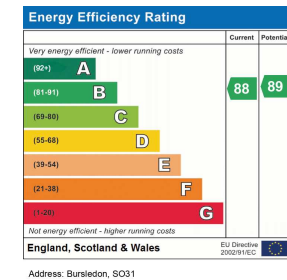
# Floor Plan



# Area Map



# Energy Performance Graph



These particulars, whilst believed to be accurate are set out as a general outline only for guidance and do not constitute any part of an offer or contract. Intending purchasers should not rely on them as statements of representation of fact, but must satisfy themselves by inspection or otherwise as to their accuracy. No person in this firm's employment has the authority to make or give any representation or warranty in respect of the property.

32 Bridge Rd, Park Gate, Southampton SO31 7GF

Tel: 01489 584 298, Email: hello@chimneypotsestateagents.co.uk, <https://www.chimneypotsestateagents.co.uk/>

