



## Wandsworth Bridge Road, SW6

£475,000

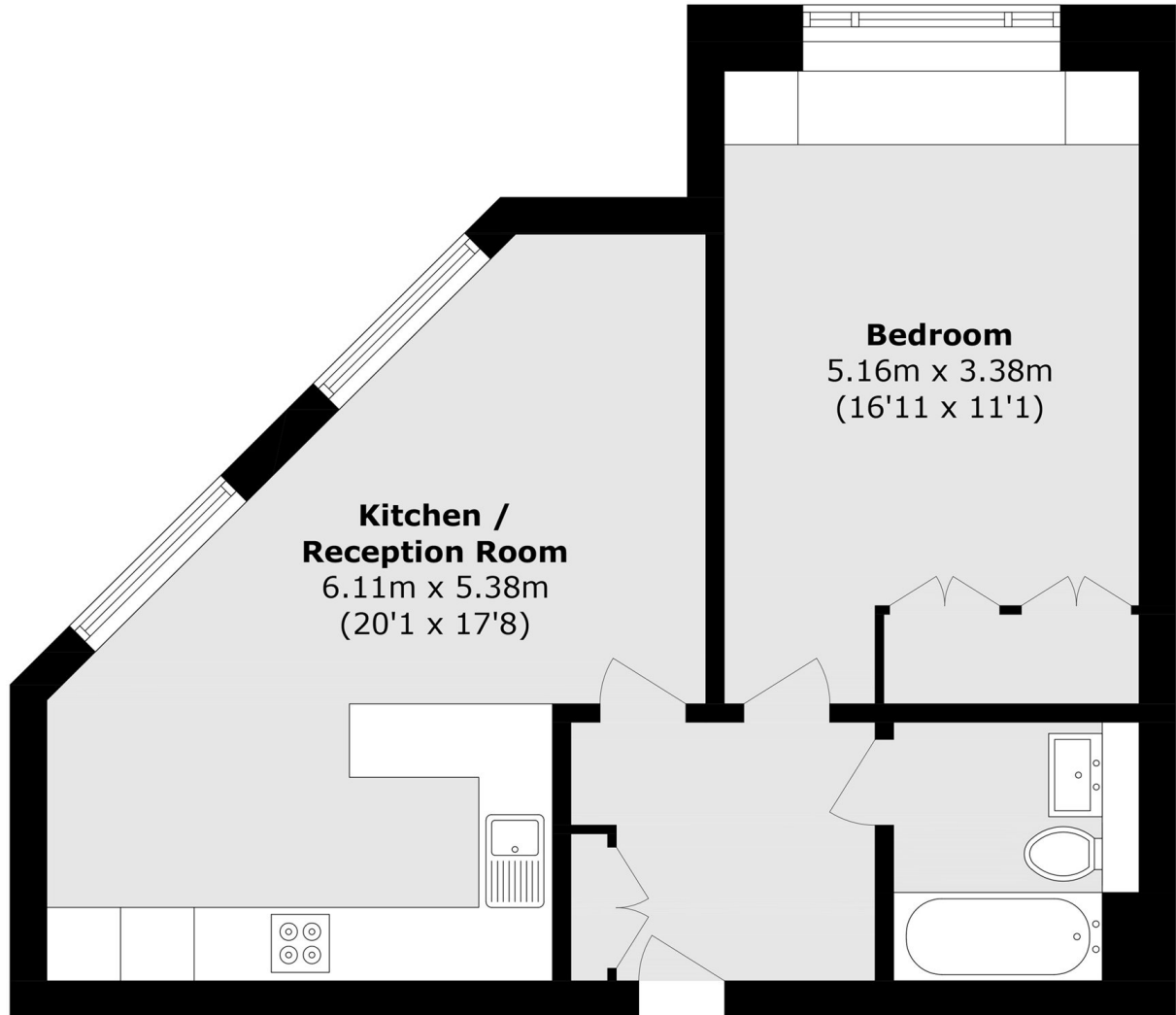
A fantastic opportunity to acquire a beautifully-presented one bedroom apartment. The property features a generously proportioned bedroom, a contemporary open plan kitchen/reception room, and bespoke fitted storage with integrated seating.

The property is located a short distance from the amenities in both Fulham Broadway and Parsons Green. The restaurants, cafés and boutique shops on Wandsworth Bridge and the New Kings Road are only a short walk away.

### Features

- One Bedroom
- Open Plan Kitchen/Living
- Share of Freehold
- Abundance Of Light
- Ample Storage
- Parsons Green

# Wandsworth Bridge Road, London, SW6



Total area (approx.): 52.0 sq. m (559.7 sq. ft)