

BRENNAN

BESPOKE



£110,800

Ayrton Close

Kettering, NN15 4BS

A fantastic opportunity to get onto the property ladder with this modern three-bedroom home on the popular Hanwood Park development in Barton Seagrave, available on a shared ownership basis with a 40% share on offer. Step inside to a welcoming hallway that leads you to a stylish, contemporary kitchen at the front of the house, perfect for home cooks and busy mornings. To the rear, the spacious lounge is bathed in natural light, with double doors opening out to the garden, creating a wonderful space for relaxing or entertaining. The ground floor also benefits from a convenient WC and useful storage cupboards. Upstairs, you'll find three well-proportioned bedrooms. The main bedroom is a generous double overlooking the garden, while the second bedroom offers further double space. The third bedroom is ideal as a single, nursery, or home office. A modern, well-appointed bathroom and extra storage on the landing complete the first floor. The property also benefits from off road parking. Hanwood Park is a thriving new community with excellent access to local amenities, schools, green spaces, and convenient transport links into Kettering and beyond. This is a place where you can truly feel at home. With a 40% share available, shared ownership makes this modern home more accessible and affordable. Rent is payable on the remaining share, and eligibility criteria apply.

3



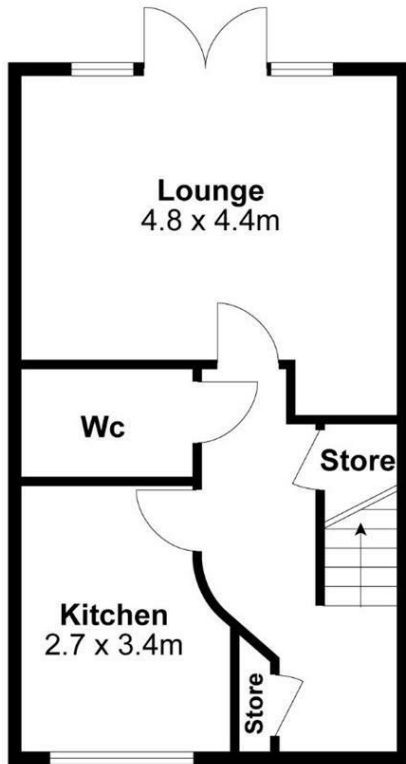
1



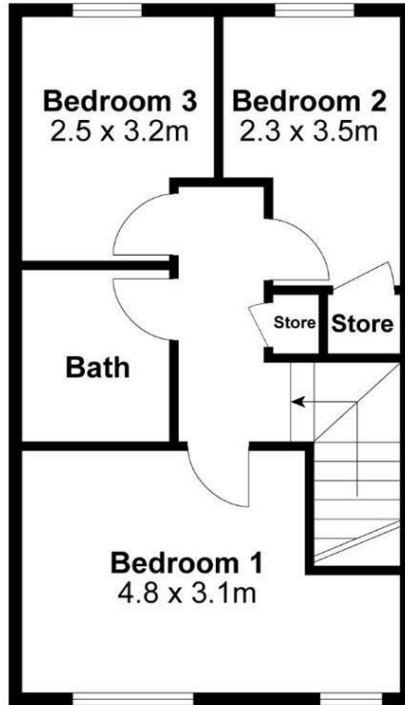
1







Ground Floor



First Floor

Internal Area Approx. : 86m²

For identification only not to scale

BRENNAN
BESPOKE

LOCAL AUTHORITY
North Northamptonshire

TENURE
Leasehold

COUNCIL TAX BAND
C

VIEWINGS
By prior appointment only

Energy Efficiency Rating		Current	Potential
<i>Very energy efficient - lower running costs</i>			
(92 plus) A			96
(81-91) B		85	
(69-80) C			
(55-68) D			
(39-54) E			
(21-38) F			
(1-20) G			
<i>Not energy efficient - higher running costs</i>			
England & Wales		EU Directive 2002/91/EC	

Agents Note: Whilst every care has been taken to prepare these particulars, they are for guidance purposes only. All measurements are approximate and are for general guidance purposes only and whilst every care has been taken to ensure their accuracy, they should not be relied upon and potential buyers/tenants are advised to recheck the measurements

BRENNAN
BESPOKE

OFFICE ADDRESS
BRENNAN BESPOKE
2 The Tithe Barn Glendon Lodge Farm
Glendon
Kettering
Northamptonshire
NN14 1QF

OFFICE DETAILS
01536 904400
info@brennanbespoke.co.uk
<https://www.brennanbespoke.co.uk>